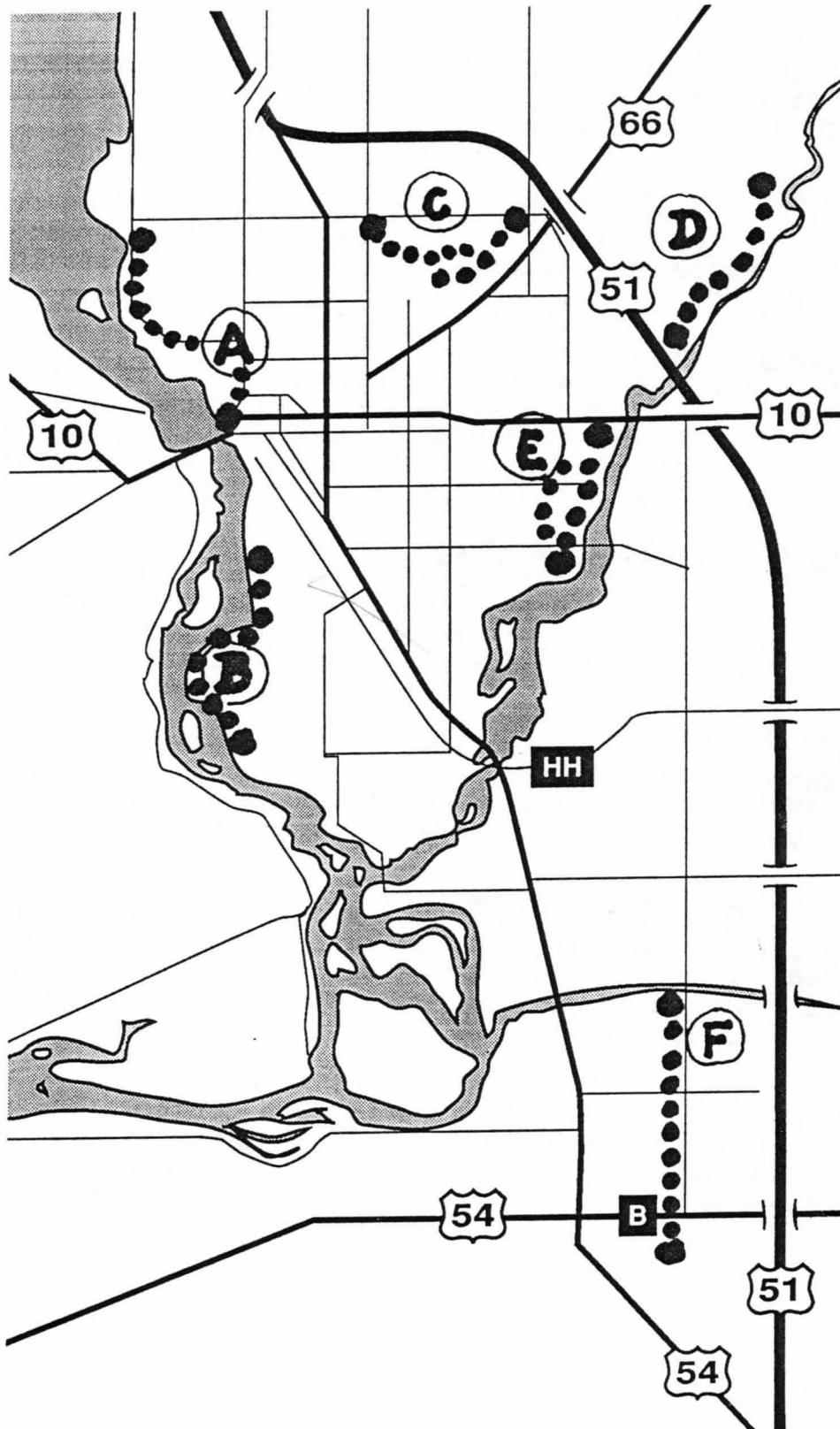


THE GREEN CIRCLE

For Reference

Not to be taken from this room



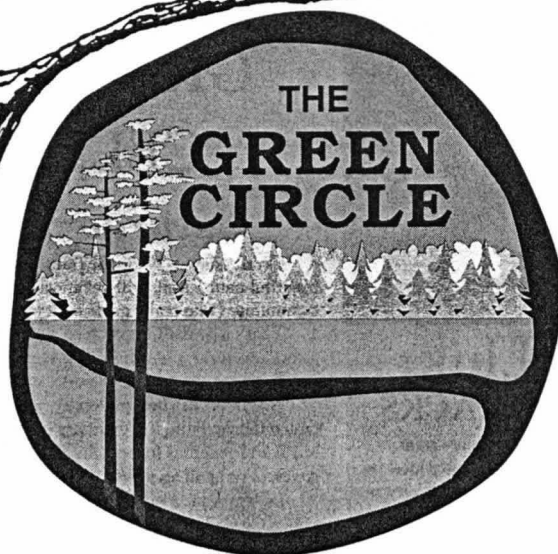
(OVER FOR DIRECTIONS)

GREEN CIRCLE TRAILS NOW OPEN (May 15, 1991)

- A. Riverfront Trail
Trail starts near the Chamber Office at the Wisconsin River and goes North about 1.3 miles to Bukolt Park. Park at Bukolt or near the Chamber lot. (Hiking and Bicycling)
- B. River Pines Trail
Starts from the western parking lot of River Pines (which is at the western end of Sherman Ave.) Parallels the river about 1.6 miles to the City Wastewater Plant at the west end of Bliss Ave. where parking is permitted. (Hiking and Bicycling)
- C. University Trail
The Schmeekle Reserve trail begins near the northeast corner of Michigan Ave. and Maria Drive. Park on Maria Drive. The trail loops University Lake and can be hiked about one mile to the Visitors Center which is a block east of Michigan Ave. on North Point Drive. There is parking at the Center also. (Hiking)
- D. Plover River/Wellfields Trail
This 1.8 mile loop starts at the east end of Maria Drive at Barbara's Lane where there is a parking lot. Go east on Highway 10 to Green Ave. in Park Ridge. Turn north to Jordan Lane then east to Janick circle which becomes Barbara's Lane. (Hiking)
- E. Plover River/Iverson Park
This 1.3 mile trail loops from the parking lot in Iverson Park at the foot of Jefferson Street. Go to Park Ridge on Highway 10 East, turn south on Sunrise Ave. to Hillcrest Dr. Turn east through the gateway downhill to the parking lot. (Hiking)
- F. Plover/Hoover Avenue Trail
Drive on Highway 10 East to the Budgetel Motel. Turn south at the traffic light on Country Club Drive (which becomes Hoover Road). Proceed about 2.5 miles to the Little Plover River where this trail begins. It continues south to Lake Pacawa for more than 2 miles. (Hiking and Bicycling)

NOTE: At this printing, there is road construction on Hoover Road near Highway HH. Temporarily, try Business Highway 51 South to Plover/Whiting and turn east on either Elm Street, Porter Road, or Roosevelt to Hoover Avenue.

(OVER FOR MAP)



Saturday,
JUNE 1
Rain or Shine!

GRAND OPENING!!

8 am..... 24 mile walk begins (all the way)
12 noon 12 mile walk begins
1 pm..... 8 mile walk begins
2 pm..... 5 mile walk begins
3 pm..... 3 mile walk begins
3:30 1 mile walk begins

All Walks Begin at the Bandshell
At Pfiffner Pioneer Park

FREE:

All Walks,
Maps,
Prize tickets
&
Trail treats.

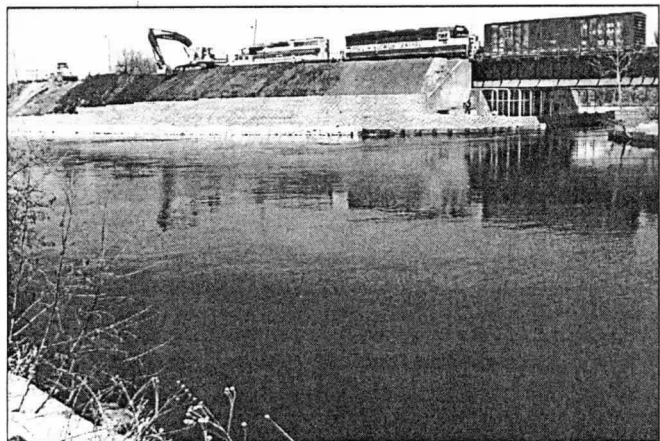
4 pm..... Dedication Celebration & Ribbon Cutting
4:10 pm..... Music by "The Sundance Show Band"
4:10-7 pm Kids Entertainment, "The Flying Fool"
5 pm..... Drawing for Prizes
5:10 pm..... Music by "The Sundance Show Band"
6 pm..... Awards & The Grand Prize Drawing
6:10 pm..... Music by "The Sundance Show Band"

Food and Beverages from 3:30 - 7 pm for a nominal fee by the Portage County Leadership Institute

June 2, Sunday - STARTS AT THE BANDSHELL

1 pm..... Fun Family Bike Sponsored by Campus Cycle
2 pm..... Fun Run Sponsored by SPASH Cross Country & Track Teams

A CELEBRATION OF COOPERATION JOIN THE FUN
EVERYONE walks a Mile - or - More on June 1



Here's the Final Link: UNDER THE RAILROAD TRACKS

The Green Circle becomes a circle on June 1, 1996!

On that day, you'll be able to hike or bike 24 miles encircling the entire community.

This final link is a spectacular trail under the Wisconsin Central railroad bridge at the Plover River near Patch Street.

The pathway comes from McDill Trail north across Patch Street to the tracks, where it hugs the base of the steep banks for about 300 feet and then goes under one of the busiest railroad tracks in Wisconsin. After 400 feet of trail on the north side of the banks, the trail is joined to scenic Iverson Park Trail to finish the circle.

Roy Menzel, committee member, describes it: "As the Green Circle project progressed through the past seven years, it looked like the underpass was a nice dream, but probably an impossible nightmare. It was to be our only high-cost hurdle. There were also many, many approvals required from state and federal agencies, corporations and municipalities. "We somehow obtained the \$258,700

with a \$206,000 federal/state grant, minimizing the need for scarce local tax funds. A miracle of private and governmental cooperation! Next, we received go-ahead approvals from every source. "But then, we found that the underpass project was considered too tough by likely contractors, and the first bids far exceeded our funding."

Dan Trainer continues the story: "We asked for re-bidding and a low bid came within reach of our pocketbook. Somers Companies of Wisconsin, the Stevens Point firm, tackled the project where angels feared to tread. Their people worked through last November and this April in some mighty poor weather — cold, windy and wet. They finished it in time for Grand Opening. The result is a scenic highlight of the circle.

"The underpass, from beginning to end, has been a fitting project to conclude the effort, to bring down the curtain.

"It was far from easy. But it brought out every conceivable form of private and governmental cooperation. A source of pride and pleasure for this one-of-a-kind community."

They're Turning Everything Green

These people listed below want to turn everything green before Saturday, June 1.

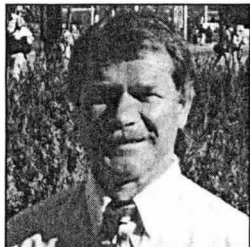
They're passionate about making Grand Opening a memorable CELEBRATION OF COOPERATION for the entire community.

They say they are inspired by the spirit of hundreds of residents — volunteers, landowners, donors, trail users — who have helped make the Green Circle a reality, a dream come true.

John Jury, their chairman (and a red-hot user of the trails), has high praise for his brainstormers. "They have been tremendous. Ideas pop out like tulips in the spring. And it's such a pleasure to share the task with people who have fun — and get the work done, too!"

Here's the Grand Opening Committee:

Laura Barnett	Sally Ellingboe
Bill Berry	Pam Owens
Greg Diekroeger	Lisa Piikkila
Tom Schrader	Terry Taylor



JOHN JURY
"Ye Grand Opener"

And here's the subcommittee that met first to set the course and the goals for the Grand Opening:

Bob & Jayne Winblad
Greg Diekroeger
Marg Coker-Nelson
Tom Schrader
Jo Lodzinski
Julie Weier
Dan Newhouse
John Jury

If Portage County turns green before June 1, it's all their fault!

It's for Everybody! A VERY SPECIAL GRAND OPENING CELEBRATION

Saturday, June 1, 1996

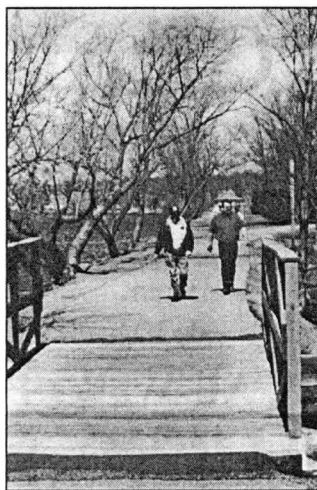
On this day — National Trails Day — the Green Circle and its 24 miles of beautiful nature trails will be officially turned over to the people of this great community (who really made it all possible).

That's why the Grand Opening is dedicated to all of the people — now and in future generations — who will use and preserve this unique circle of trails.

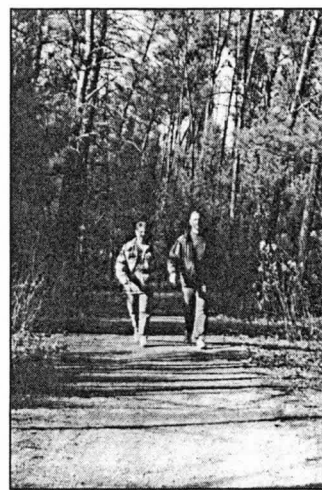
Yours to enjoy — for exercise, solitude, relaxation.

Neighbors in Portage County, working together, shared in developing the Green Circle. From its beginning in 1989, it brought the area people together with broad and generous support. In this spirit, the Green Circle stands ready to serve generations of all ages for as long as nature itself will endure.

Let's make it a historic celebration by having hundreds of walkers on the Green Circle June 1.



The river, the bridge, the trees on
Riverfront Trail.



A healthy stride for this couple on
McDill Trail.

Imagine these 24 miles of trails alive with action! Every kind and shape of trail users — infants, young people, parents, grandparents, families, neighborhoods, clubs, the agile, the handicapped — all are asked to join the fun.

From 8 a.m. to 3:30 p.m., walk a mile, or three, or five, or eight, or 12, or go all the way. Or just come to enjoy the music, prizes, fun and food from 4 p.m. to 7 p.m. at the Riverfront Bandshell. Join in a very exciting day.

All walkers will receive free prize tickets at each mile marker. Along the trails there will be surprises and donated refreshments.

The prizes are great, including an airline round-trip for two to any place (green, of course) in the U.S.A. mainland, bicycles, rollerblades, sports gear and apparel, binoculars, Green Bay Packer stuff, greens fees, camera, greenbacks, etc., etc., etc. Lots of prizes, no long speeches, just a real fun celebration.

On Sunday, June 2, at 1 p.m. and 2 p.m., there will be a Family Fun Bike for all bikers and a Fun Run for all runners. No pre-registration is required for Sunday. For the Saturday Walk, please send in the registration form by May 24. The form is on page 4.

Join the fun on June 1!



Two young bikers share the fun on the trail in Whiting.

2 Trails of natural beauty at our doorstep

NOW, Who Maintains It?

As of June 1, 1996, Grand Opening, the day-to-day operations and normal maintenance of the Green Circle will be the responsibility of local governments and their Parks Departments.

They will divide these tasks as follows:

Stevens Point: All segments within Stevens Point, including Iverson Park, Bukolt Park, railroad underpass, River Pines bridge, Moses Creek.

Plover Village: Hoover Road Trail, including blacktop and bridges. Also, any additional trails in Plover.

Portage County: Those segments outside Stevens Point and Plover, including bridges over the Plover River in Whiting and the Plover River Trail.

The various Adopter Groups will continue to assist in keeping trails clean, safe and scenic. The County Parks Commission provides a seasonal Trail Ranger to maintain safety and security. UWSP staff and students will assist in developing educational materials to bring out the historical and natural features of the trail system.

RULES FOR TRAIL USERS

No One Wants An Accident

The trail system has been designed for both biking and walking/running. "We will work to keep it open for bikers as long as riders respect the safety rules," said Jerry Ernst, committee member. "Most bikers and hikers are considerate and careful. We need everyone's help to control the few who are not. Violations are subject to a penalty of \$172.00."

BIKERS

Bikers are welcomed on nine of the 12 trails. On the three restricted trails — Whiting Park, Paper Mill and University — alternate bike routes are set up and signed so that bikers may complete the Circle. Until further notice, on the Stagecoach Trail (and Fritsch Pathway), bikers may use either the hiking trail or the alternate bike route along Old Wausau Road and DuBay Avenue.

Ernst added that speed and reckless biking are the main dangers. All bikers are required by ordinance to yield to hikers, hold their speed to 10 m.p.h. and sound their bell or other warning device when approaching other users.

HIKERS/RUNNERS

Committee member Gary Speckmann emphasized, "Hikers are required to stay on the trails and respect private ownerships; to stay to the right when other users pass; when in a group, avoid blocking the trail; start no fires except in designated park grills; when accompanied by dogs, keep them under control on a leash and promptly remove excreta.

"All users are asked to help preserve the Green Circle by using respect and consideration. It's an unusual public resource made possible by many private landowners. With the proper care, we can make sure it lasts for generations," Speckmann concluded.

(Please see the "Map and Guidelines" brochure for details.)

FREE NEW MAP

Tom Schrader reports that Green Circle users may now pick up the new "Map & Guidelines" brochure. It's a great street map of the area with all of the trails shown in green.

It's the generous gift of Marathon Travel Shops and Spectra Print.

Copies are available at the City and County Parks Departments, Schmeeckle Reserve, Business Council (Chamber) UWSP Student Center, YMCA and Visitors Bureau.

PRICELESS TRAILS THROUGH PRIVATE LANDS

"The Green Circle was not possible without the generosity of the private landowners. It's much more natural and beautiful because of them," says George Rogers, committee chairman.

Perhaps the Circle could have been routed on various streets and highways, he adds, but these private lands have made it more scenic and convenient.

"Area residents — and generations to come — will be grateful to these landowners who are allowing the public to use their property without a charge of any kind."

THANK YOU

Patricia/Robert Berard
Gary/Nancy Buse
Wanda Cass Family
Consolidated Papers, Inc.
Harry Danczyk
Marcyanna Ferriter
Larry Fritsch
Hofmeister Family
Izaak Walton League
Kimberly Clark
Chet/Loretta Kirschling
Randy/Jane Kruzicki
Noel/Barbara McCormick
Dr. Angelo Milano
Harry Parker
Parkwood, Inc.
John Rachick
Dr. Francesco Sciarrone
Sentry Insurance
Nick/Dianne Somers
River Pines Nursing and Rehabilitation Center
Jos. Vokoun/R. Hyland
Bill/Elsie Wanta
Wisconsin Central, Ltd.
UW-Stevens Point

Where Did All The Bucks Come From?

"As the Green Circle needed dollars to complete each trail segment, and then for the bridges and underpass, the money always seemed to come from somewhere," Committee Treasurer Ron Wessels says.

"The response from so many sources has been just unbelievable: personal donors, corporations, municipalities, the county, the state and federal agencies. It seemed as though everyone wanted to share in getting this unique project completed."

Here's a recap of where the dollars came from:

Stevens Point (room tax)	\$155,000
Portage County	\$56,000
Whiting Village	\$2,000
Plover Village	\$39,000
State DNR	\$46,500
State DOT (federal program)	\$206,000
Private Donations	\$138,000
Total	\$642,500

When one considers the value of 25 private parcels of land offered without charge for public use, plus the value of countless hours of volunteer service and discounted work and supply costs by businesses — it becomes obvious that this entire community has put together a Green Circle now worth more than a million dollars, for a total cost about half that sum!

No wonder the Grand Opening should be called A CELEBRATION OF COOPERATION.



Son, Dad and Dog on the Hoover Road Trail to Plover.

ADOPTERS DO IT REGULARLY

They keep the Circle clean!

They keep it purty!

They help keep it safe!

That's the job these volunteer groups are doing for all of us. It's a constant effort to keep the entire Green Circle in tip-top shape. These people do it regularly and their work makes a great difference to the trails. For example, the Kiwanis Club's Gil Oelke and Marg Coker-Nelson assign a volunteer for each week and provide them with a custom-made picker-upper tool and gloves. The volunteers grab a plastic bag and away they go!

Here are the ADOPTERS:

KIWANIS CLUB — Riverfront Trail
ROTARY CLUB — River Pines Trail
JR. WOMAN'S CLUB — Holiday Trail
WELLNESS COMMISSION — University Trail
WOMAN'S CLUB — Iverson Park Trail
TELEPHONE PIONEERS — McDill Trail
CWA LIFE UNDERWRITERS — Whiting Park Trail
MORNING OPTIMISTS — Moses Creek Trail
IZAAK WALTONS — Plover River Trail North
BIG BROTHERS/SISTERS — Plover River Trail South
CROSSROADS HEALTH — Bridge to Arlington Place
(Pending) — Paper Mill Trail, Hoover Road, Stagecoach Trail

SIGN-UP for the Grand Opening Walk

Name(s), Address, Phone

How many miles?

1, 3, 5, 8, 12, 24

All walkers assemble at the bandshell. Those wishing to walk all the way gather at 8am, 12 milers at 12 Noon, 8 milers at 1pm, 5 milers at 2pm, 3 milers at 3pm and 1 milers at 3:30pm. Transportation will be provided to starting places. All walks end at the bandshell around 4pm for dedication prizes and fun. Walkers receive a FREE raffle ticket at each mile marker. Prizes include trips, green bikes, outdoor gear, "Green" Bay Packer gear, and greenbacks. All walks are FREE to the public. Please mail registration form to Parks & Recreation Dept., 2442 Sims Ave., Stevens Point WI 54481 by May 24.

(P.S. Yes, historic T-shirts and bike water bottles are available. Order here now:

I want ____ T-shirts @ \$7 each. Circle sizes: S M L XL XXL

I want ____ Green Circle bike water bottles @ \$3 each.

Please make checks to Green Circle Grand Opening Committee)

THE FUTURE OF THE CIRCLE:

"We're in it 'til we turn green"

Is the Green Circle Committee's work all through?
Who will manage the Circle?
Will it be improved? Expanded?

THE ORIGINAL COMMITTEE

Since 1989, the Green Circle Committee has operated as a group of volunteer citizens initiated by the Chamber of Commerce (Business Council). It has no governmental authority nor corporate status. Its role has been creative planning, advising, raising funds and coordinating construction tasks with volunteers, government units and private contractors.

Present members are: George Rogers, Chair; Roy Menzel, Secretary; Dan Trainer; Jerry Ernst; Ron Wessels, Treasurer; Tom Schrader, and Gary Speckmann. (Two members — Bill Werner and Jim Rothenbach — served until they moved to other cities.) John Jury, who first articulated the circle idea, has served ex officio from the beginning. Al Czech has been in charge of pancakes, French toast, eggs and oatmeal.

The committee has met regularly at 8 a.m. Friday mornings for nearly seven years. They have shared the various project work. The committee is officially connected to the Stevens Point Area Foundation. This makes it possible to accept tax-exempt donations.

Some Tasks Remain

Following are some of the tasks that remain to improve the Circle and to maintain it as a lasting community resource:

1. Improve the route north of Iverson Park to the Plover River Trail. Also the Hofmeister segment.
2. Likely replacement trails — one segment of Moses Creek Trail, University Trail, and Paper Mill Trail near Consolidated Papers.
3. Finalize the connection of Hoover Road Trail with McDill Trail near the HH intersection.
4. Safe and convenient parking areas.
5. Improvements in directional signing for both hikers and bikers.
6. Work with the Parks Departments for maintenance and trail improvement to assure safety, security and scenic beauty. (This includes the Trail Ranger and possible volunteer patrols.)
7. Follow up and manage the Adopters program.
8. Development of educational pamphlets and signs interpreting wildlife, flora, history and geology along the trails.
9. Handle cooperative relationships with individuals and agencies important to the success of the Circle.
10. When appropriate, support efforts for additional trail segments, spurs and/or loops. (For example, a Plover River Trail loop; a segment for westside Stevens Point; a Jordan Park connector; the Rail Trail connector to the Green Circle, etc.) Assist in and facilitate construction and financing of projects approved.
11. Recommend guidelines and controls for uses of the trails by individuals, organized groups and visitors.
12. Help to develop a program with schools and youth groups to encourage use by young people. Also for senior citizens.
13. Assist in fund-raising when major items of maintenance (such as bridge and boardwalk repairs) are needed.
14. Work with local government units to obtain permanent easements of land parcels which are vital to permanence of the Circle.

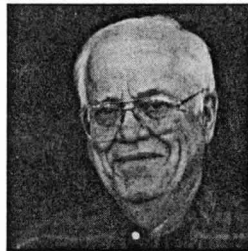
UNTIL THEY GREEN-UP

With these tasks remaining, members of the committee have volunteered to continue to function where their help is needed by the Parks Departments and municipalities. As Roy Menzel described it: "Our roots are so deep in the Circle, I think we're in it until we turn green."

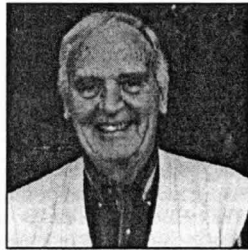
PATHway VOLUME 5
MAY, 1996

By the Green Circle Committee
2442 Sims Ave., Stevens Point, WI 54481

THE COMMITTEE



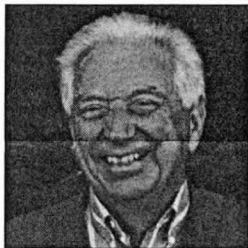
GEORGE ROGERS, Chair
Retired newspaper editor and columnist



ROY MENZEL, Secretary
Retired PR consultant and author.



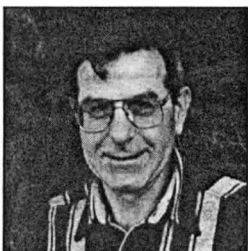
TOM SCHRADER
City Parks and Rec. Director (Bear fan)



DAN TRAINER
Retired Dean - UWSP College Natural Resources



GARY SPECKMANN
Superintendent, County Parks Dept.



JERRY ERNST
Retired County Parks Superintendent



RON WESSELS, Treasurer
President, Bank One

SOMETHING FOR EVERYONE

Besides hiking, running and biking, visitors may use portions of the trail to fish, canoe, photograph, cross-country ski, rollerblade or rest. Most surfaces are crushed granite; some are surfaced with woodchips or blacktop. Some segments are handicapped accessible.

FOR YOUR SAFETY

- No motorized vehicles permitted.
- Stay on the trails for safety and privacy.
- No fires of any kind are allowed except in designated park grills.
- Communicate. Slower visitors may be startled by faster trail users.
- Allow enough room for other trail users.

HOURS

Daily, 6 a.m. - 11 p.m.
Trail is not lit; daytime use is encouraged.

RESTROOMS

Schmeckle Reserve Visitor Center
Open all year. Daily, 8 a.m. - 5 p.m.

Pfiffner, Bukolt, Iverson and Whiting Parks
Open first weekend in May through second weekend in October



BEFORE YOU START

Foot traffic permitted on all trails. See below for other activities allowed on some trail segments.

HIKERS

- Be courteous to other visitors.
- Keep to right to allow others to pass.
- When in a group, allow room for other visitors.

BIKERS

- Bikes restricted where posted.
- Yield to all other trail users.
- Use your bell or horn to announce your presence to walkers well in advance.
- Never exceed the 15 mph speed limit.
- Approach blind turns slowly to anticipate other trail users and obstacles.
- Racing or reckless riding is prohibited.
- Walk bikes on boardwalks, steep hills, and narrow bridges.

RUNNERS

- Allow oncoming hikers room to pass.
- Always alert hikers as you approach from behind. Pass carefully on the left.

PETS

- Pets must be kept on an 8-foot leash and in control at all times.
- Promptly remove excreta in consideration of other trail users.
- Dogs permitted on most trail segments; not in Schmeckle Reserve.

SKIERS

- Please observe designated trails groomed for skiing.
- Dogs not allowed on ski trails.
- No racing or ski-skating.

GET INVOLVED

The Green Circle is supported by donations from community organizations, businesses, and individuals. Your tax-deductible contribution helps to maintain trail surfaces and boardwalks, build new trail sections, and acquire new green space in the Stevens Point area.

To donate, please send a check or money order to:

Community Foundation of Portage County, Inc.
Green Circle Endowment Fund
PO Box 968, Stevens Point, WI 54481

For more information or to report a safety concern, visit greencircletrail.org or call 715.346.1433.



THE GREEN CIRCLE

THE PATH THAT CONNECTS US



MAP & GUIDE

GREENCIRCLETRAIL.ORG

WHAT IS THE GREEN CIRCLE?

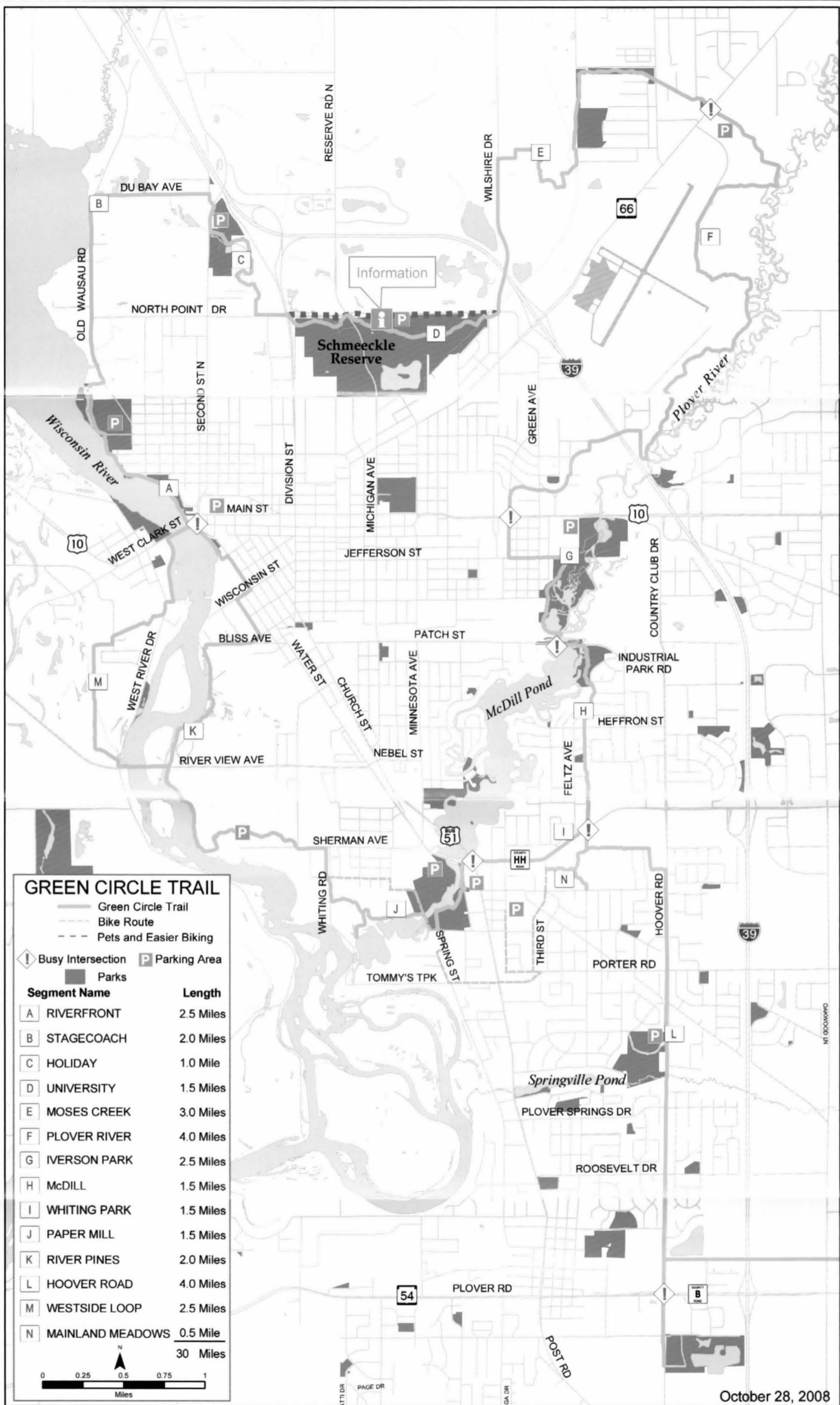
The Green Circle is a 30.5 mile scenic trail that threads through the Stevens Point area providing residents with a unique opportunity to experience nature, history, wellness and leisure in a safe and fun environment.

The trail is the perfect resource for nature enthusiasts of all kinds. Within minutes of most Stevens Point residences, hikers, bikers, runners, cross country skiers and families seeking a quiet reprieve can find solitude and space to pursue their favorite pastimes.

Winding through forests, over wetlands, and along rivers, the Green Circle is reminiscent of days of huge pineries, pioneer settlements, and the lore of the Wisconsin and Plover Rivers.

The Green Circle is managed by the Green Circle Board of the Community Foundation of Portage County, Inc. and made possible through the support of private landowners, local government, UW-Stevens Point, the people of Portage County and many other public and private organizations.

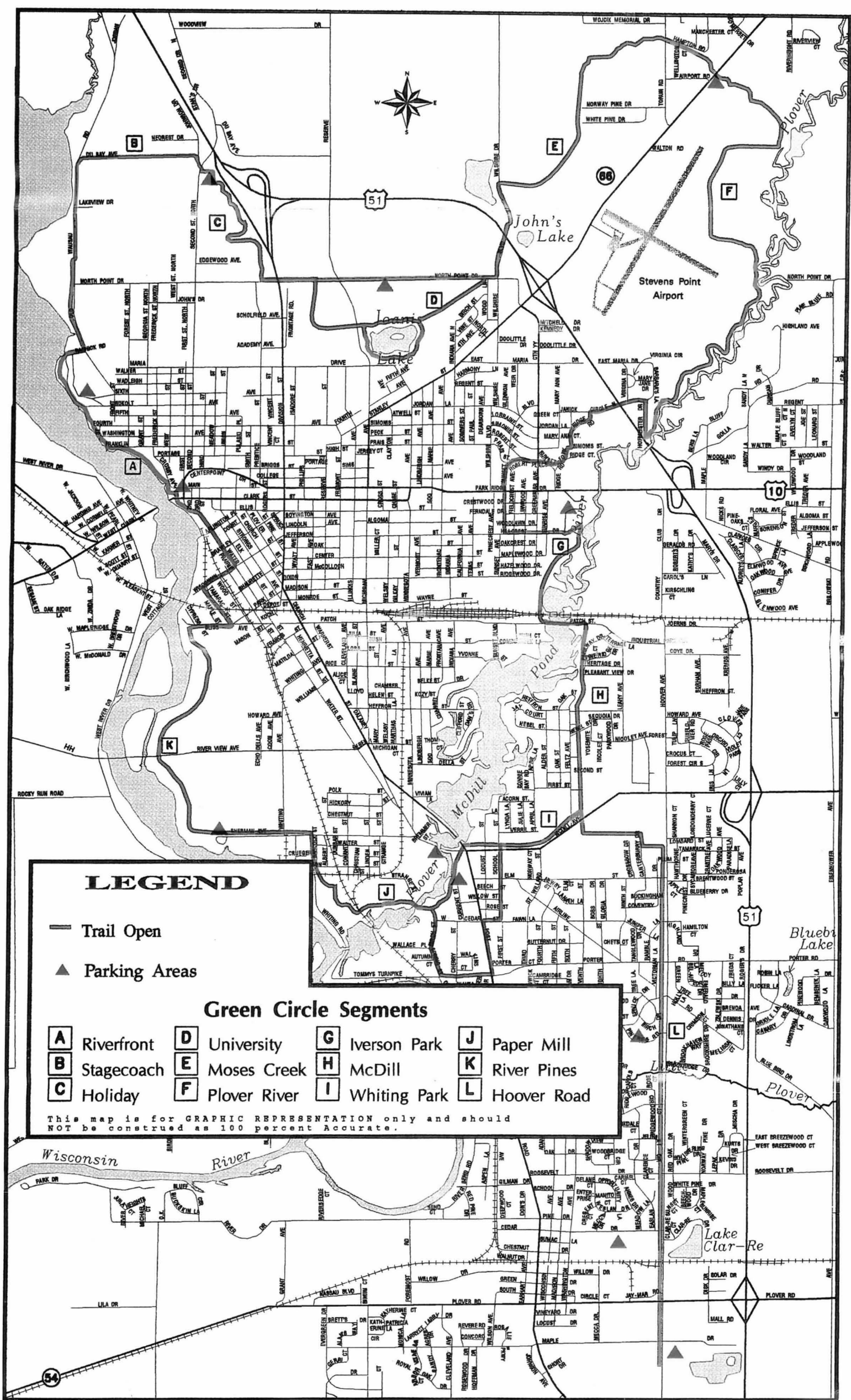




GREEN CIRCLE TRAIL
 Map also available at
greencircletrail.org

With 14 connecting segments, the trail is within 10 minutes of most Stevens Point residents. More than 80% of the Green Circle winds through secluded natural areas. For free parking, restrooms and cold water, start at Schmeckle Reserve's Visitor Center. Staff is available every day from 8:00 a.m. – 5:00 p.m.

Green Circle Trail



LEGEND

- Trail Open
- ▲ Parking Areas

Green Circle Segments

- | | | | |
|---------------------|-----------------------|-----------------------|----------------------|
| A Riverfront | D University | G Iverson Park | J Paper Mill |
| B Stagecoach | E Moses Creek | H McDill | K River Pines |
| C Holiday | F Plover River | I Whiting Park | L Hoover Road |

This map is for GRAPHIC REPRESENTATION only and should NOT be construed as 100 percent Accurate.

From 2000-2001
Portage County Map

Stevens Point
Area's 24 Mile
Nature Trail
circles through
the beauty of
river shores,
trees, wild birds
and animals—recalling
the history of huge pineries,
Indian camps, pioneer
settlements, and lore of the
Wisconsin and Plover Rivers.

something FOR EVERYONE

This greenway is for residents and visitors of all ages. It places natural areas at our doorstep - for hiking, biking, jogging, cross-country skiing, canoeing, wildlife watching, fishing, family outings, and just plain solitude. The Green Circle preserves our natural areas while assuring their safe use for present and future generations.

LIKE TO *get* INVOLVED?

Since the Green Circle is a community project, everyone's involvement is welcomed (individuals, civic groups, schools, clubs, or corporations).

For more information, contact one of these committee members: Dan Trainer, Jerry Ernst, George Rogers, Gary Speckmann, Ron Wessels, Tom Schrader, or Roy Menzel. Tax deductible gifts may be directed to:

**The Green Circle -
Stevens Point Area Foundation
2442 Sims Avenue
Stevens Point, WI 54481**



MAP & GUIDELINES

WALKERS · bikers

skiers · RUNNERS

THE *green circle* DEPENDS ON COOPERATION

It brings together all the neighboring municipalities, people of Portage County, and visitors in the unifying spirit of nature, history, wellness and enjoyment. It is made possible by the support of private landowners, local governmental units, the Chamber of Commerce, UW-Stevens Point, public utilities, state and federal agencies, and the citizens of our great community. Here's how you're asked to respect and preserve this unusual resource for all who use it now and in the future.

trail GUIDELINES

- Walkers and runners are permitted on all trails.
- Biking is restricted only on posted areas which prohibit bike use.
- NO MOTORIZED VEHICLES ARE PERMITTED.
- Stay on the trails for safety and privacy.
- No fires of any kind are allowed except in designated park grills.
- Stay alert. Communicate. Slower moving individuals may be startled by faster moving trail users.

SKIERS

- Dogs are not allowed on ski trails.
- Certain trails are kept groomed for skiing.
- No racing or ski-skating.
- When others approach, slow down and pass with care.

USERS *with* DOGS

- Dogs must be kept on a leash and in control at all times.
- Allow enough room for other trail users to pass.
- Promptly remove excreta in consideration for other trail users.

BIKERS

- Ride only on trails designated for biking.
- Yield to all other trail users. Slow down and pass with care.
- When encountering walkers on narrow trails, stop and wait for them to pass or signal you through.
- Use your bell or horn to announce your presence to walkers well in advance, particularly when approaching from behind.
- Never exceed the 10 M.P.H. speed limit. Slowly approach blind turns in anticipation of other trail users and obstacles that are beyond your view.
- Yield to other bikers traveling uphill.
- Racing or reckless riding is prohibited.
- Walk bikes on boardwalks, steep hills, and narrow bridges.

WALKERS

- Please be courteous to other trail users. When other users pass, stay to your right. When in a group, avoid blocking the trail.

RUNNERS

- Slow down and allow oncoming walkers to pass on one side of the trail.
- When approaching from behind, alert walkers of your presence and pass carefully on the left.

GREEN CIRCLE MAP LEGEND

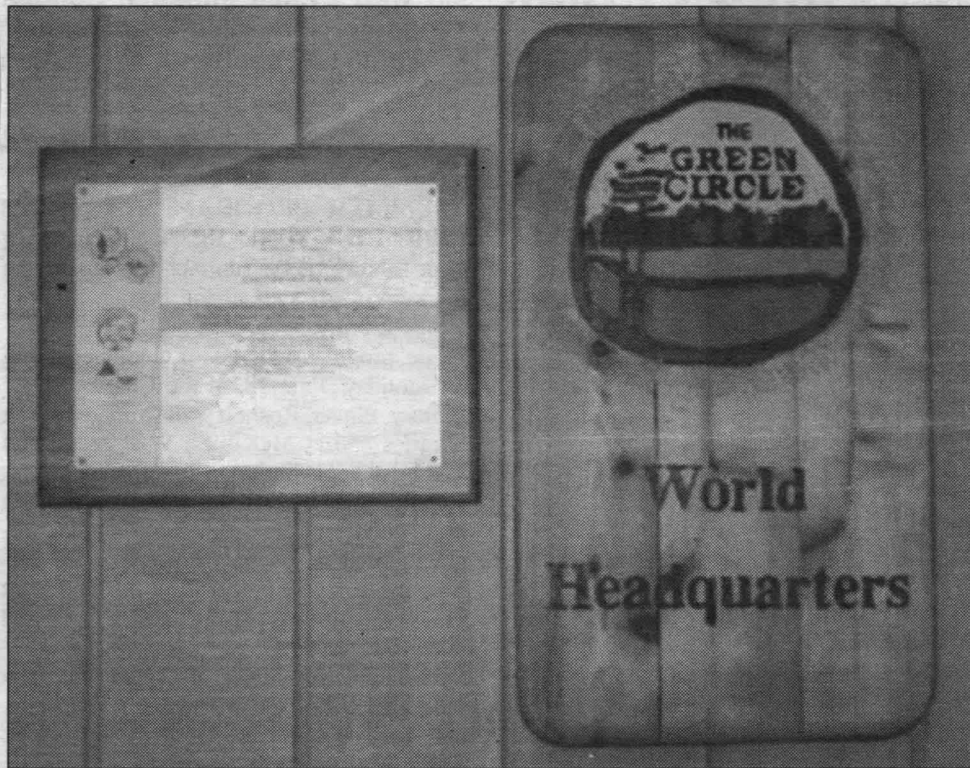
- GREEN CIRCLE TRAIL
- 🚗 PARKING AREA

All trails are open for hiking.
Bikers should follow signs for trails
designed for biking.

- A** RIVERFRONT
- B** STAGECOACH
- C** HOLIDAY
- D** UNIVERSITY
- E** MOSES CREEK
- F** PLOVER RIVER
- G** IVERSON PARK
- H** MCDILL
- I** WHITING PARK
- J** PAPER MILL
- K** RIVER PINES
- L** HOOVER ROAD

This map is for reference purposes only and
should not be construed as 100% accurate.





Al's Diner, 3324 Jefferson St., Stevens Point, was the meeting place for seven years for the founders of the Green Circle Trail and became known as "Green Circle World Headquarters." (Contributed photo)

PLG 8 JUNE 2007



more information on bequests or donations to, or grants from the Community Foundation, contact its offices at 342-4454, or visit its Web site at www.cfpwi.org.

Editor's note: Terry Rothmann is the senior vice president at M&I Bank in Stevens Point. He is a member of the Green Circle Committee and past member of the Board of Directors of the Community Foundation of Portage County.



Raflik named state Polka Queen

A former Stevens Point resident has been selected as Wisconsin Polka Queen for 2007-08.

Karen Raflik, Milwaukee, the daughter of Ray and Alice Raflik, Stevens Point, was crowned by the Wisconsin Polka Boosters Inc. at "The Wisconsin State Polka Festival" at the Concord House in Concord on Saturday, May 19.

John Pinter, director and past president of the 1,200-member club, said Raflik will reign over Polka Booster events and other polka gatherings during 2007-08. She succeeds Brittany Ann Roob.

Raflik is employed at Marquette University in Milwaukee, and her hobby is dancing. She is rated among the top polka

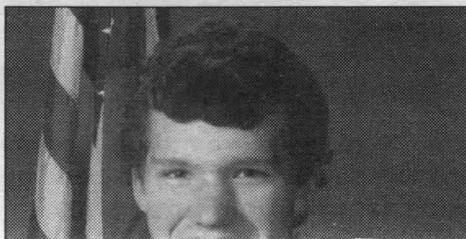
dancers in the country. Recently she and Lenny Alt, her dance partner, performed with the "Polka Dancing Stars" at the Performing Arts Center in Wausau. The "Polka Dancing Stars" is a highly rated event in the polka world, similar to the "Dancing With the Stars" TV program.

Raflik is a master polka dance instructor for the Wisconsin Polka Boosters, which sponsors polka dance lessons. She is also an accomplished ballroom and swing-type dancer and teaches those styles of dancing. She has won many awards for her dancing and is a former dancer with the Syrena Dance Ensemble of Milwaukee that performed in Stevens Point at the Portage County Cultural Festival in May.

Shuda receives Eagle Scout Award

Matthew Shuda, 15, grandson of Ray and Irena Shuda and great-grandson of Elizabeth Shuda of Stevens Point, received the Eagle Scout Award, the highest honor of the Boy Scouts of America, on Sunday, April 22.

Matthew is a member of Boy Scout Troop 306 of Faribault, Minn., which is sponsored



sin with \$1,000 Initiative Scholar 1990, the Herb Kohl Educational to Wisconsin students, teachers a

Hometown

SUMMER PROGRAM STARTS AT LIBRARIES JUNE 18: "Get a Clue @ Your Library" is the summer program theme for kids of all ages at the Portage County Public Library.

The program will be offered, beginning on Monday, June 18, at the Charles White Library, Plover, Rosholt and Almond branch libraries and at McKinley, Washington and McDill schools during summer school.

Children and teens can read for fun, earn prizes and participate in a variety of programs such as puppet shows, theater performances, a CSI Finger Print or Shoe Print program, mystery parties, geo-caching and many other events.

Preschool Storytimes also begin on June 18 and will be held Mondays at 6:30 p.m. and Tuesdays and Wednesdays at 10 a.m. in the Prairie Room of the Charles White Library. No registration is required.

Plover Storytimes will be on Mondays at 10:30 a.m. and Tuesdays at 6:30 p.m. Registration is required in Plover by calling

Green Circle Fund is means to keep community treasure forever

By TERRY ROTHMANN
Special to The Gazette

Did you know that the founders of the Green Circle Trail met every Friday for seven years at Al's Diner (Green Circle World Headquarters), planning and developing the Green Circle?

Did you know that the Green Circle is a unique partnership between six municipalities and 16 private land owners?

In 1989 the founders of the Green Circle began their work to establish a trail that would be part of this community forever. A celebration of the opening of the trail happened just seven years later in 1996. With cooperative efforts, what started in 1989 continues today; and more importantly, it will continue well into the future.

It is estimated that the Green Circle is used by more than 100,000 people annually. Activities range from biking, running and dog walking to bird watching and leisurely walks through our parks and woods, or along our rivers and streams.

The Green Circle is also used for events such as Walk Wisconsin and the Big Brothers/Big Sisters Bike-a-thon.

To ensure the long-term sustainability of this community asset, the Green Circle Fund was soon established. Managed by the Community Foundation of Portage County, this endowment fund now carries out the founders' vision of a permanent trail that links our communities that remains free for all to use.

Annual earnings generated through the Green Circle Fund go back to maintain the trail. Funds are used annually for resurfacing, maintaining, and improving the trail, as well as acquiring permanent easements or selected properties that keep the Green Circle complete.

Funds are also used to reroute the trail, as happened last fall when the River Pines

trail was closed due to construction. Many have said that the new segment of the trail, opened just a few weeks ago, is nicer than the one it replaced.

An annual fund-raising campaign takes place each fall that currently boasts more than 1,000 donors. The Green Circle Fund through the Community Foundation provides a philanthropic means for those who enjoy the Green Circle to contribute to its perpetuity.

Those early visionaries dreamed that the Green Circle would be a gift to our children and our children's children and live on in the lives of this community forever. Through the Green Circle Fund at the Community Foundation of Portage County their dream will remain a reality.

Join with us. The vision of the original board of directors and the lasting effect of the first modest gifts continue to shine for the betterment of all in Portage County. For more information on bequests or donations to, or grants from the Community Foundation, contact its offices at 342-4454, or visit its Web site at www.cfpcwi.org.

Editor's note: Terry Rothmann is the senior vice president at M&I Bank in Stevens Point. He is a member of the Green Circle Committee and past member of the Board of Directors of the Community Foundation of Portage County.

PCG 8 June 2007 (p8)

CITIZENS FOR GREEN SPACE

We need **150 citizens...**
please, will you lend a helping hand?
Our future **PRIDE & PROGRESS**
depend on *water and the land.*

For **150 ways** we all can
cooperate and advocate,
stop by our **BOOTH** in the **TENT**
today, *before it is too late!*

...so that **150 years** from now,
Portage County is **STILL** the place
to live, work, grow and recreate,
because we love *our good green space.*

Attend our public citizens' forum:
Green Space—the Next 150 Years
Thursday, June 11, 6:30-8 p.m. at
Portage Co Public Library, Pinery Room

G*GROWTH*

.. **R***ESearch*

.... **E***COLOGY*

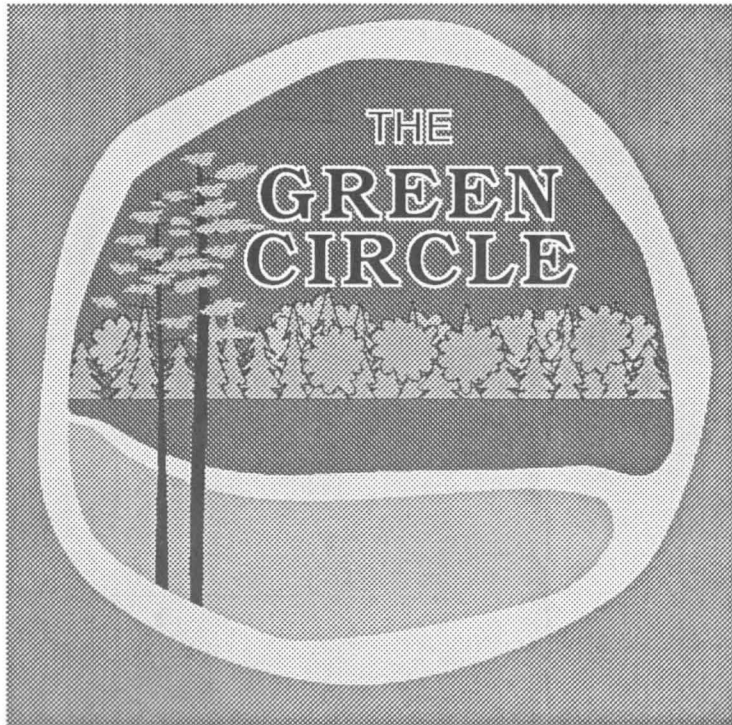
..... **E***DUCATION*

Join us **N***ETWORK*

More info: ☎ 592-4600, 341-6672, 341-2790



∞ ***Share this Invite—Do Not Litter*** ∞

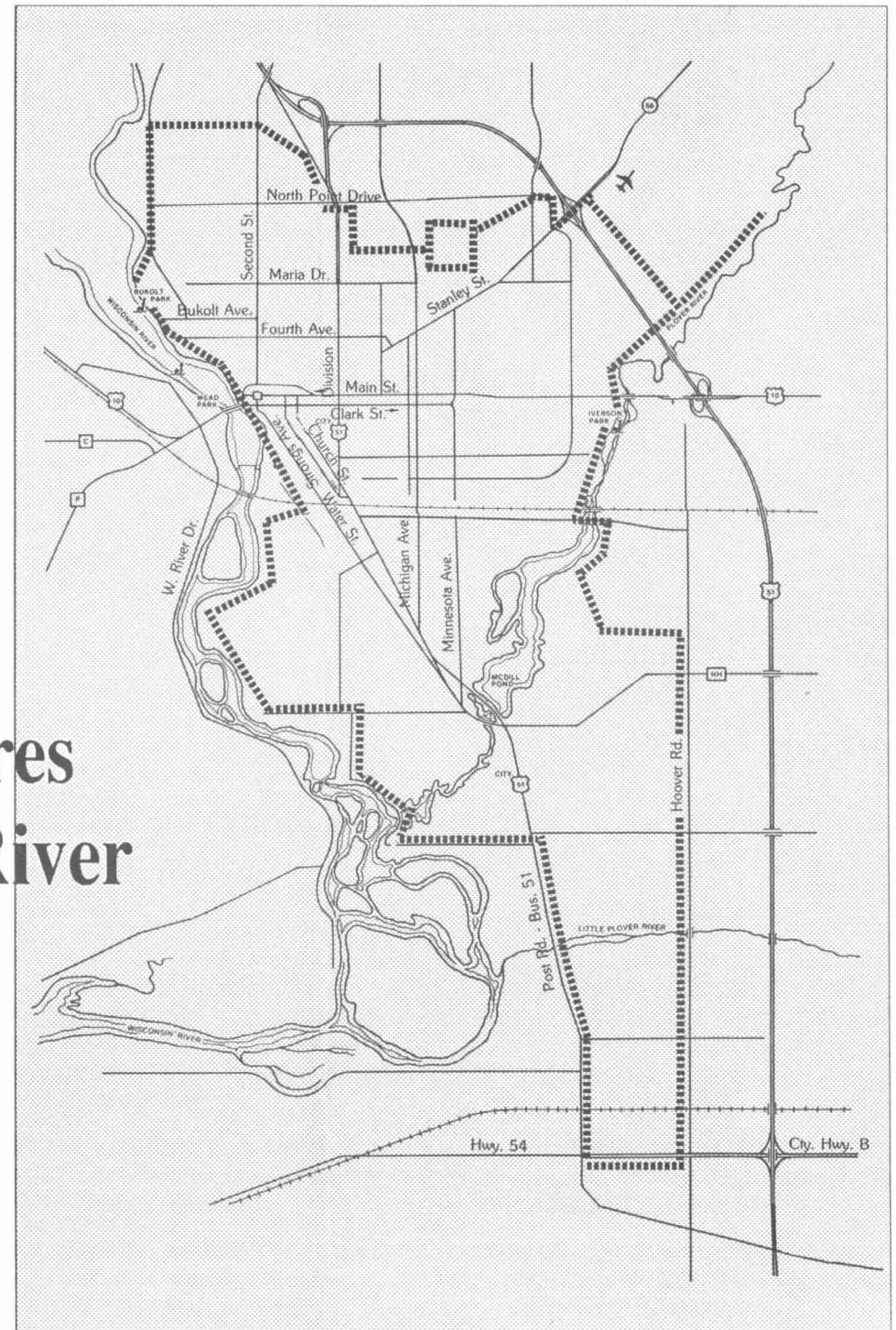


Linking the Natural Features of Our Hometown on the River

It'll encircle the Stevens Point community and run through green areas. Thus the name, The Green Circle. But why this long trail so close to an urban area? In 1986, the President's Commission on Americans Outdoors called for the development of local greenways and trails to "provide people with access to open spaces close to where they live."

The Green Circle will be close to thousands of people. It will also be close to history, because it will follow the Wisconsin and Plover Rivers, where the community was born in the logging days.

Indians walked this path many centuries ago. Modern man has not lost the need to stay in touch with the natural world. The Green Circle will help fill this need.



Linking the Natural Features of Our Hometown on the River

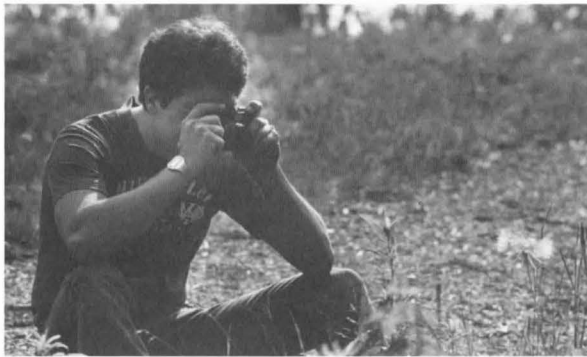
It is designed to link green areas that surround the greater Stevens Point community and to connect with trails in Plover, Whiting, Hull and neighboring areas.



In 1986, the President's Commission on Americans Outdoors called for local greenways to "provide people with access to open spaces close to where they live."

The Green Circle is close to thousands of residents so that all may enjoy it. It is also close to history since it follows the Wisconsin and Plover Rivers where the community was born during the logging era. Centuries ago, Indians walked these same paths.

We have not lost our need to stay in touch with the natural world.....and with our history.



Photos by: Doug Wojcik, Dave Aplin, Mike Brisson.



Walking the Path of Community Cooperation

The Green Circle depends on cooperation. It has brought together all neighboring municipalities and the people of Portage County in the unifying spirit of nature, history, wellness and enjoyment.

It is possible because of the support of private landowners, local governmental units, the Chamber of Commerce, UW-Stevens Point, public utilities, state agencies and citizens of our great community.

Like to Get Involved?


Since The Green Circle is a community project, help and support is welcomed from everyone — individuals, civic groups, schools, clubs, corporations.

For information, call one of these committee members: Dan Trainer, Gerry Ernst, George Rogers, Jim Rothenbach, Tom Schrader or Roy Menzel. Or call the Chamber of Commerce office at 344-1941.

Tax deductible gifts may be directed to:

The Green Circle-Stevens Point Area Foundation
600 Main Street
Stevens Point, WI 54481
(The tax exempt number is ES 28538)

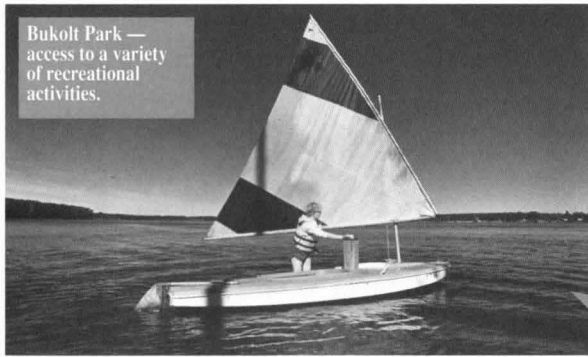
*Neighbors, working together
to keep The Green Circle
on the Right Path.*



On the Right Path.

Stevens Point Area's
24-mile Nature Trail
circles through the beauty of river shores,
trees, plants, wild birds and animals...
recalling history of the huge Pinery,
Indian camps, pioneer settlements;
and lore of the
Wisconsin and Plover Rivers.....

Bukolt Park — access to a variety of recreational activities.

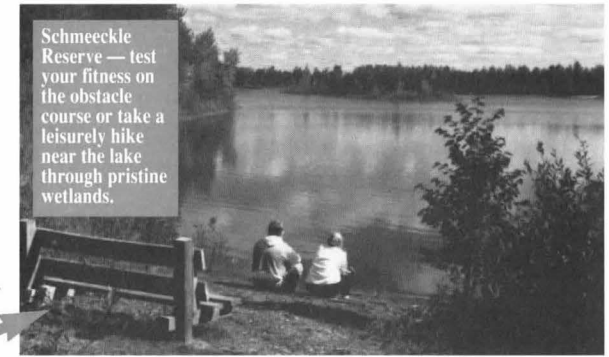


The Green Circle Is for Everybody

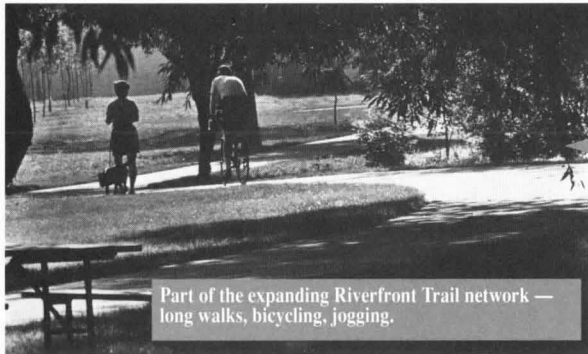
This greenway is for residents and visitors of all ages. It places natural areas at our doorstep anytime — for hiking, bicycling, jogging, cross-country skiing, canoeing, wild life watching, fishing, family outings, and just plain solitude.

The Green Circle preserves our natural areas while assuring their safe use for present and future generations.

Schmeckle Reserve — test your fitness on the obstacle course or take a leisurely hike near the lake through pristine wetlands.



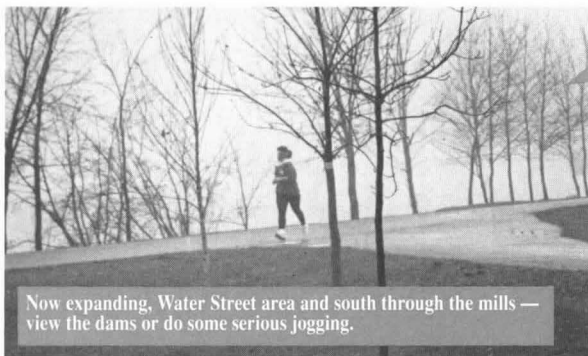
Part of the expanding Riverfront Trail network — long walks, bicycling, jogging.



Izaak Walton area — featuring part of over 11 miles of cross-country ski trails.



Now expanding, Water Street area and south through the mills — view the dams or do some serious jogging.



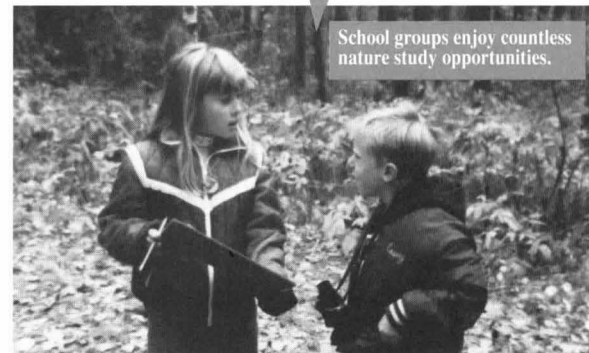
1,000 ft. of boardwalk will guide hikers through the Plover River flood plain.



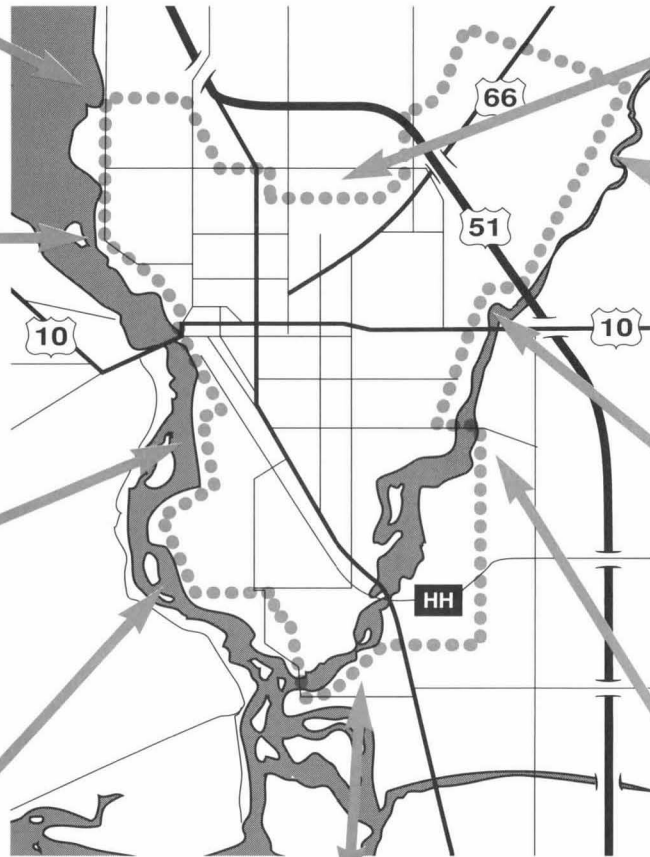
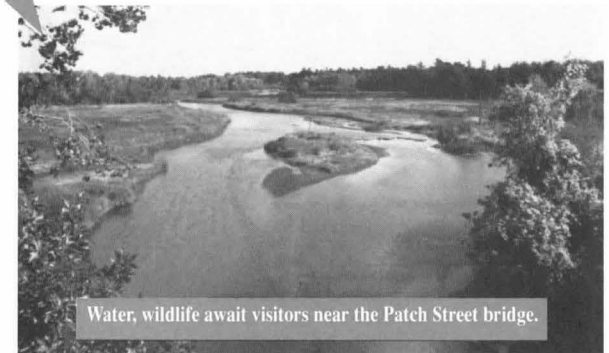
Fishing and other water-based recreation.



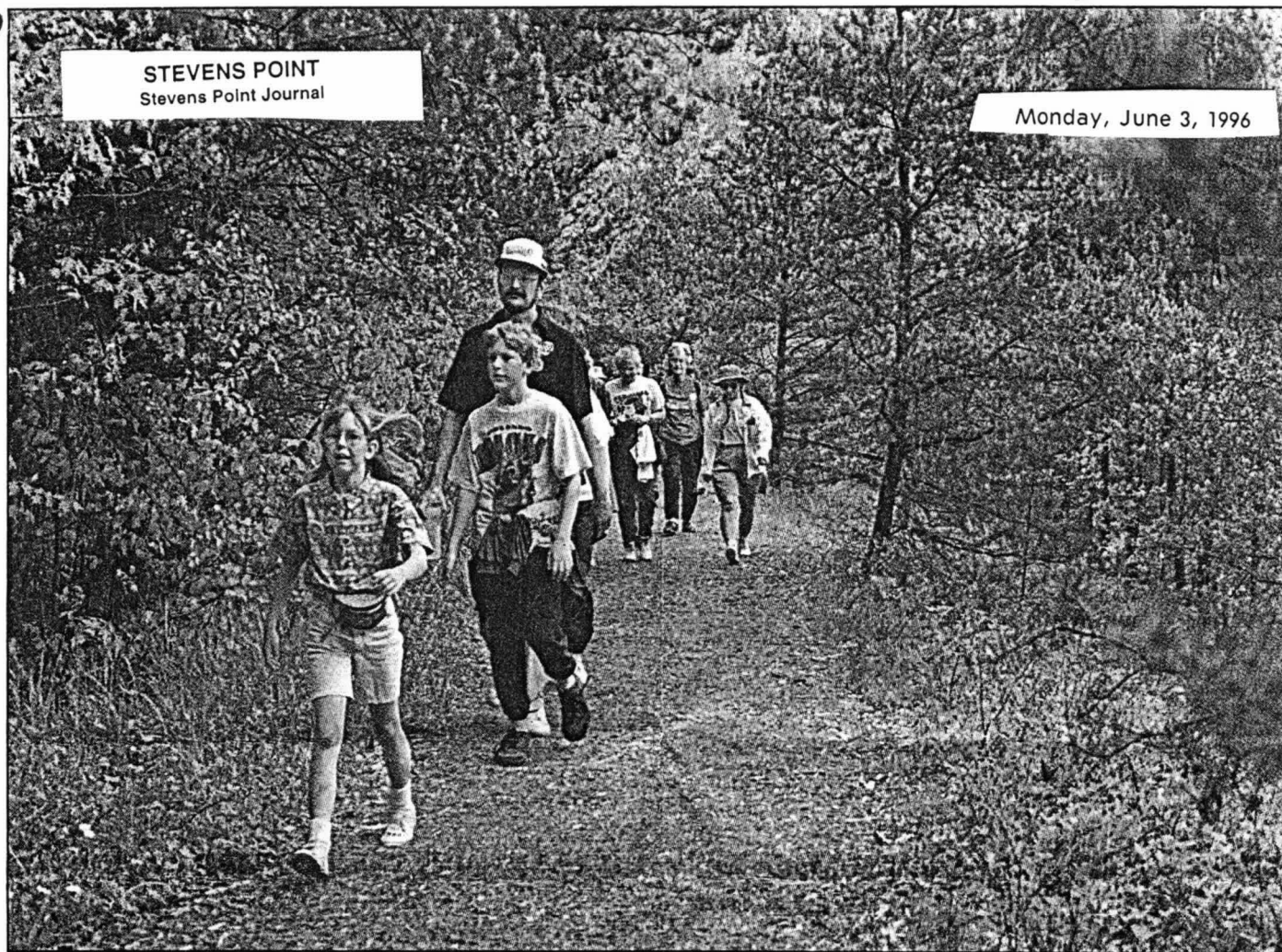
School groups enjoy countless nature study opportunities.



Water, wildlife await visitors near the Patch Street bridge.



4SP



SOME OF THE MORE than 900 people who turned up for the grand opening of the Green Circle hike through the wooded Schmeckle Trail portion on Saturday. (Nikki Kallio photo)

Walkers try out the trail

Green Circle grand opening attracts hundreds

By NIKKI KALLIO
of the Journal

Seven years of planning, fund-raising, and hard work ended in a community celebration on Saturday, the official grand opening of the Green Circle.

Hundreds of people came out to Pfiiffner Pioneer Park to celebrate an idea that developed into a 24-mile trail system around the Stevens Point community.

"More people were introduced to the Green Circle Trail than we expected," said Roy Menzel, a charter member of the Green Circle Committee. "Many people came for the first time. Once people know about the Green Circle Trail, we know they'll enjoy it."

About 900 community members came out to Pfiiffner Pioneer Park to celebrate the opening of the trail by participating in grand opening walks, from moms and dads carrying infants in

carriers on their backs to senior citizens in their 70s. Walkers could choose the mileage of the route they wanted to walk — one mile, three, five, eight, 12, or 22 miles.

Dennis Raabe, principal at Madison School, walked the 22-mile route with his two sons, Brock and Adam.

"It's something they can remember," Raabe said. "In the future, maybe they'll bring their children. It's something they can appreciate down the line."

Brock, 11, thought that the trail was long, but was proud that he'd made it the entire distance.

"I liked the nature trails," he said. "I liked walking by the lake."

Andy Sloan of Springfield, Mo., was a first-time user of the trail. Now that he resides in Stevens Point, he said he will probably use the trail more often.

"I love to walk," he said. "I try to walk 10 to 15 miles a day."

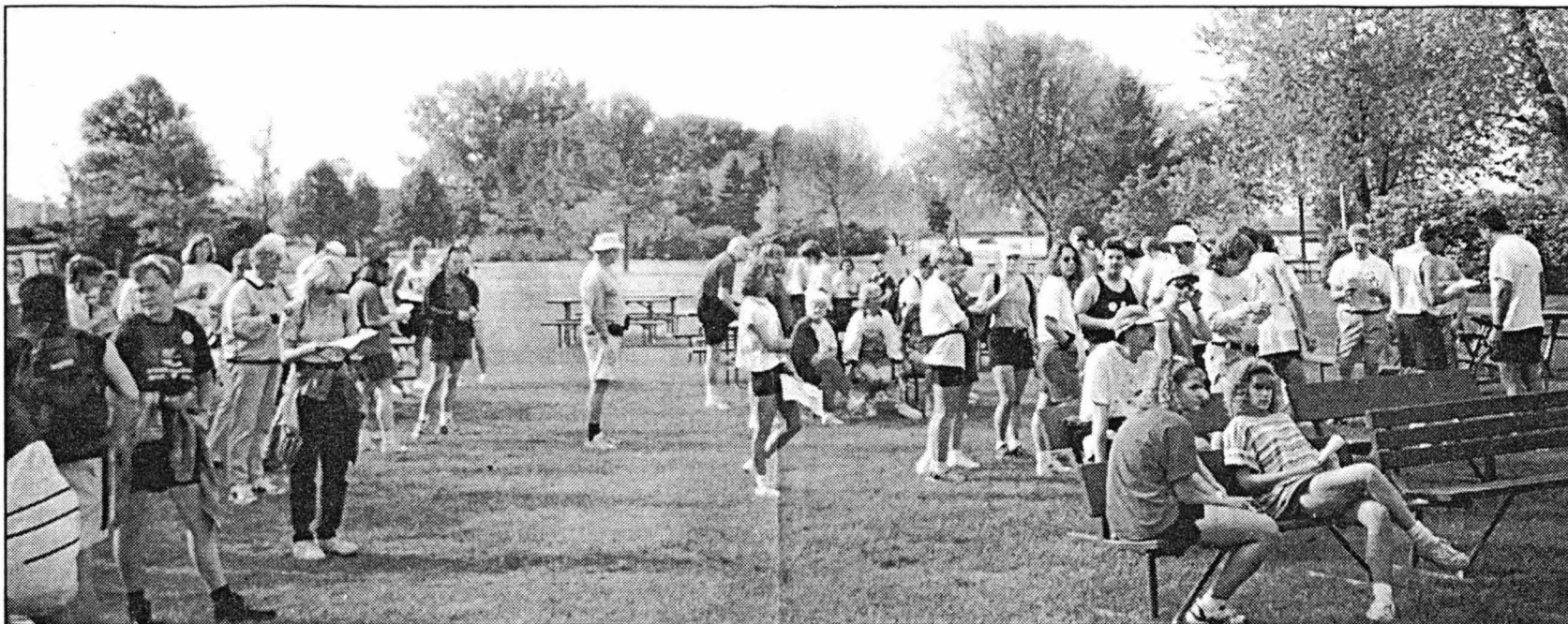
Sloan said he will call his friends from Missouri and tell them to come up and use the trail with him.

Beginning on Hoover Road, south of Plover Road, the trail travels north past the Stevens Point Municipal Airport and around the north side of the city, and curves back along the Wisconsin River and joins with Whiting Park.

Over \$650,000 was raised for the construction of the Green Circle Trail, including \$158,000 in donations from individuals in the community. Twenty-five private landowners allowed the trail to run through their property free of charge.

"This couldn't have been done without the spirit of the community behind it," said Menzel.

(see Green Circle, page 7) ✕



WALKERS GATHER FOR the start of the Green Circle Trail walk. The more than 900 participants could choose how many of the 24 miles of trail to hike on Saturday. (Journal photo by Doug Wojcik)

Green Circle

(continued from page 1)

Judy Thies of Stevens Point chose to walk the five-mile route.

"I know I can make it five miles, realistically," she said, before leaving for the trail.

Thies and her husband, Ron, walk or bike the Green Circle Trail five to six times a week during the summer. The completion of the trail, she feels, will be good for attracting tourists.

Deanna Meyer and Anja Dunnett, both students at UW-Stevens Point, also walked the five-mile route.

"We thought we'd participate in a community event," Meyer said.

Both have been regular users of the Green Circle in areas around Schmeeckle Reserve.

"It's a nice way for the community to get physically active and to experience the great outdoors we have here," Dunnett said.

The walks were scheduled so that participants would all arrive back at Pfiffner Pioneer Park at 4 p.m. for a ceremonial ribbon-cutting and celebration. Charter member Dan Trainer of the Green Circle Committee made a short presentation followed by a ribbon cutting. Seven-year-old Jason Ladwig, who had been selected randomly, made the cut.

Ladwig and his mother, Gerilyn, walked the 22-mile route.

"And then he wanted to walk to the mall," she said.

Music was provided by the "Sundance Show

Band," and food was served by the Portage County Leadership Council. Entertainment for children was provided by the "Flying Fool." A prize drawing followed.

Scattered showers had been forecast for Saturday, but the weather remained pleasant for the walkers.

"A lot of people would have hiked in the rain," said Menzel. "But the rain held off until the last hiker came in. We think that was a good omen."

On Sunday, several hundred people participated in a fun family bike ride sponsored by Campus Cycle, and a fun run by the Stevens Point Area Senior High cross country and track teams.

Green Circle Trail's wound its way into Point area's fabric

24-mile loop likely most used recreation facility in the area

By Heather Clark
Special to the Daily Herald

STEVENS POINT — Need a place to work out? A place to go to be alone? Somewhere for just the two of you to get closer? A place to fish or bird watch?

The Stevens Point area has just the area for all those needs: the Green Circle Trail.

"I think it's probably the most important or heavily used recreation facility we've got in the area," said Gary Speckmann, superintendent of the Portage County Parks Department.

"It serves such a wide variety of people and provides a lot of different activities for so many different age groups. ... It's important to the community because of what it contributes to people's lives," he said.

The 24-mile loop linking Stevens Point and Plover and smaller surrounding towns and villages was used 126,500 times between Memorial Day and Labor Day, according to 1998 statistics, the most recent available. Of course, some of those uses were by the same people, and portions of the trail are connected to other cross country trails for winter use.

About 80 percent of those using the circle are on the bike trail, however dog-walkers are stepping up their usage, Speckmann said. There also are portions of the trail dedicated specifically to hikers. People use the trail for physical activity, a break from work, short cuts to neighborhoods or other municipalities and just for relaxation.

"It's kind of neat to have a trail surrounding your city," said Bob Von Holdt, chairman of the Green Circle Trail Committee. "And it's got a lot of nature ... It's used heavily by local people, but more and more out-of-town people are becoming aware of it."

Von Holdt ran the Schmeeckle portion of the trail for years before he was asked to become involved in the Green Circle development, at first as part of the Community Foundation of Portage County and then through his own interests. A self-proclaimed environmentalist and lover of the outdoors, Von Holdt said it was a perfect opportunity.

"(The outdoors) just is part of my lifestyle," he said. "I feel pretty good about giving back to something I've enjoyed over the years and keep watch over it so others can enjoy it too."

Green Circle Trail

What it is: 24 miles of winding bike and hiking trails through the Stevens Point and Plover areas that is used for recreational purposes.

Managers: A committee of 13 people oversees requests, improvements, maintenance.

History: The trail began as an idea started in 1986 with resident John Jury, who works at the University of Wisconsin-Stevens Point. Portions of the existing trail already were used individually, and soon became linked. The first constructed linkage and most scenic portion of the trail opened in 1990. Completion occurred in mid-1990s with agreements from private property owners and funding from the state, local municipalities and local proceeds from a book. The future promises linkages with other trails including one from the Amherst area and possibly one from the Wausau area.

Stretches of the Green Circle Trail wind through area parks, woodsy patches, near ponds and rivers, through private property and public, and some, while the committee is working to avoid this, along streets or county highways.

"We have plenty of places to bike and hike, but it's nicer and safer if you're off the roads," said George Rogers, who became the third member of the committee in the late 1980s. "I think people love to get outdoors and close to nature, and the Green Circle allows this almost in our backyards."

The impetus started with resident John Jury, who works at the University of Wisconsin-Stevens Point. In 1986 he had the idea to create a trail through natural areas where hikers, bicyclists and cross country skiers could go without traveling long distances. There were portions of the existing trail that already were used individually, like those in Schmeeckle Reserve and the river-front segment from Clark Street to Bukolt Park. But soon, piece by piece, they became linked.

The portion from the Stevens Point Sewage Treatment plant reaching to River Pines Nursing Home area opened in 1990 — the most scenic portion at the time. It stretches through an area that was known as Echo Dells, where people had summer cottages until the 1920s. There's a pile of stones there, the remnants of a chimney at a cottage that belonged to George Nelson, an attorney and a regent of the state Normal School system.



Brendan Ebel (left) and Emily Tallitsch walk the Green Circle Trail through the Schmeeckle Reserve in Stevens Point. Some people who work near this portion of the trail walk it during their lunch hour.

As agreements with private property owners were reached, additional segments opened and full construction was completed in the mid-1990s. At the time, it cost about \$650,000, of which about \$140,000 was donations from individuals and businesses. Large amounts of money also came from the Department of Natural Resources and the state Department of Transportation, and the city of Stevens Point, village of Whiting and Portage County also contributed funding.

Stevens Point resident Roy Menzel wrote a book, "Hometown on the River," and donated the profits to the Green Circle. That money paid for a trail plan by Dave Aplin, who now is with U.S. Fish and Wildlife Service in Iowa. The plan proved to be the Green Circle blueprint and was followed closely.

Property owners played a big role in the project, Rogers said. Much of the land the trail goes through is public — Iverson, Bukolt, Pfiffner Pioneer and Whiting Village parks, the Schmeeckle Reserve, the Municipal Airport and Water Department land — but some of it is private, too. A number of property

owners, both corporate and individual, have allowed the trail to cross their land without cost, he says.

It's all produced a recreation area that anyone can access, whether as part of their neighborhood or through a short walk or biking distance.

"The popularity, I believe, is due in large measure to its accessibility," Rogers said. "Most of the people in Stevens Point and nearby areas are within bicycling distance, and even walking distance, of the trail. Also, it's scenic. Sections along the Wisconsin and Plover Rivers are especially pretty, but other segments go through wooded land and are also attractive."

The committee is not resting with what it has, however. Community suggestions for improvements and extensions come in and are reviewed often. Already, a loop west of the Wisconsin River is being planned and the future holds connections with the Tomorrow River Trail, committee members say.

"As lands become available, we may be interested in them as loops or extensions to the main trail," Von Holdt said. "There are areas we would love to go through, we're



The Green Circle Trail is a 24-mile walking, bicycling and recreation loop linking Stevens Point, Plover and smaller surrounding communities. One stretch of the trail runs through the Schmeeckle Reserve on NorthPoint Drive in Stevens Point.

always interested in getting into green space, but we have to be sensitive to the individual land owners."

The trail has other uses as well. Nonprofit groups request use of the trail for fund-raisers or other activities. People have asked the committee to hold photo contests of the trail. And the Audubon Society will be creating a birds of the Green

Circle calendar.

The Green Circle Trail has wound its way into the area and residents' hearts, and it looks like that passion will continue reaching into other communities.

"The whole initiative and end result is looked at as a real neat thing," Von Holdt said. "It's an amazing thing that's been done."

Photos by Michelle L. Stocker/Wausau Daily Herald

Walking trail eyed around community

People who like to hike may someday have a trail around the Stevens Point community.

It has the backing of the Park and Recreation Commission and the Chamber of Commerce, and most of the land through which it would run is in public ownership. Part of the trail is already in existence, and more soon will be.

Co-chairmen of a committee pushing for the as yet-unnamed trail are Bill Werner, a former Stevens Point/Plover Area Chamber president, and Dan Trainer, retired dean of natural resources at the University of Wisconsin-Stevens Point.

The part that's in existence is the riverfront path from the Clark Street bridge area to Bukolt Park. The next piece will be from the Stevens Point sewage treatment plant to River Pines Living Center in Whiting. It runs along a scenic segment of the Wisconsin River. Tom Schrader, city park and recreation director, said it should be open this fall.

These two segments would be joined. The link would have to go through or around Consolidated Papers' Stevens Point Division property, and a landscape architecture class at UW-SP is working on this.

After going through Bukolt Park, the trail would swing east through Zenoff Park, the Sentry Insurance land, the Schmeeckle Reserve, the Municipal Airport and the city's well field, then south along the Plover River, and through Iverson Park to Patch Street.

Exactly how it would link with the trail at River Pines is uncertain. It could swing as far south as the Little Plover River in Plover before turning toward River Pines.

The trail's estimated length is 15 miles and it is seen as a combination green belt and passive recreation area. Trainer said about two-thirds of it is already public, and private landowners, including Consolidated and Sentry, "have expressed an interest in it," although they have made no commitments. In a few places, low-traffic streets would be used as links.

The plan is built around an idea advanced in 1986 by John Jury, then a member of the Park Board.

The committee hopes to have more involvement from the university in preparing a detailed concept, with a graduate student perhaps putting a plan together as a thesis.

(see trail page 6)

trail (continued from page 1)

"We're mainly aiming it at the community," said Trainer, saying the trail could appeal to all ages. Different segments would have an attraction for different people, he said, and it could be used by hikers, bicyclists and cross country skiers.

Related issues, Werner said, could be tourism and economic development. He said motels near the route could use the trail as an attraction, and economically it would add value to the community.

"It's not political and it's not expensive," said Trainer, and is an idea that could encourage municipal cooperation.

Green Circle has new Gateway

By DEBBIE WHITE
Special to The Gazette

It's a bird... it's a fighter plane... it's a... What the heck is that unusual building under construction near the corner of Division Street and North Point Drive in Stevens Point?

For more than a month, the new Gateway to the Green Circle Trail has been turning the heads of motorists and motel guests near this busy intersection. The distinctive trail-head is the result of cooperation among diverse local and state organizations and private business owners. It reflects the community spirit that has made the 24-mile Green Circle Trail a success since its birth in 1994.

According to Tom Schrader, director of the city Parks and Recreation Department, Stevens Point has long needed an attractive "entrance node" to welcome visitors to the city and to the Green Circle Trail. The Wisconsin Department of Transportation land on the southeast corner of Division and North Point seemed like the perfect spot. With an easement provided by the DOT, the parcel was secured.

Along with Schmeckle Reserve director Ron Zimmerman and Green Circle Trail Committee member John Jury, Schrader envisioned a building that would draw guests from Division Street and nearby motels, a place where visitors could learn about recreational opportunities along the Green Circle Trail and in the University of Wisconsin-Stevens Point's Schmeckle Reserve.

When they approached the Portage County Leadership Institute for help, the local business leaders accepted the challenge. The new gateway structure became one of their projects for 1999-2000.



Schmeckle Reserve director Ron Zimmerman (left) and city Parks and Recreation Department director Tom Schrader look on as the new structure is constructed. (Submitted photo)

Led by Mae Nachman, the Leadership Institute team petitioned the Stevens Point Room Tax Committee to request funding.

The \$70,000 awarded by the committee will help pay for not only the shelter build-

ing construction, but also a new crosswalk to guide hotel visitors, sports teams from Stevens Point Area Senior High School and other Green Circle users across the busy intersection and into the quiet shade of the

shelter and a new trail segment.

"The nice thing about the trail is it's going to have lots of variety. It will cross over wetlands, streams and grassy openings and

(See Gateway, page 8)

Page 8

County Fare - Portage County Gazette

September 14, 2001

Gateway

(Continued from page 1)

under ancient oaks," said Zimmerman. Boardwalks will protect tree roots and keep people high and dry in the wetter areas. The trail will wind across the north end of the reserve, enabling people to access the Visitor Center and the Wisconsin Conservation Hall of Fame. It will also connect to a trail constructed last year that leads to the stately Berard Oaks in the far northwest corner of the 275-acre reserve.

The new trail will not only give visitors a peek into different areas of the reserve, it

will also provide a safe place for groups of students from area schools to run, said Zimmerman.

During the winter, the tall pines along North Point Drive shade the south side of the street, allowing snow piles and ice to build up and making it difficult for motorists to see joggers.

The trail will steer people away from using the street and provide them with pleasing surroundings in which to recreate or train.

The bold lines of the Green Circle Gateway structure reflect those of nearby pine trees, and a trail will soon connect a new crosswalk and the shelter, curving between large boulders and native prairie plants. A small lot at the end of the frontage road will provide parking for several cars.

Inside the shelter, colorful signs with maps and pictures will help visitors understand what they will see on the trail, interpret the natural and cultural history of the Green Circle, and recognize the people and

organizations that have worked together to create the Gateway.

One person who knows the building well - inside and out - is Bill Yudchitz of Revelations Architects/Builders, Stevens Point. A crew from Revelations is constructing the shelter, and Yudchitz volunteered his time and expertise toward the building design. His son, Dan, a recent SPASH graduate, created several of the planning drawings, putting four years of

(See Gateway, page 12)

Gateway

high school drafting training to work.

These drawings were part of his portfolio when he began the architectural program at the University of Minnesota this fall, said the elder Yudchitz.

How did they arrive at such an unusual design? "We were trying to create something that catches people's eye - and it's working," Bill Yudchitz said. The construction crew says that curious folks have been stopping by frequently, and the response to the building has been positive. (Among the work team is none other than Dave "Stan" Schmeckle, grandson of the reserve's namesake, Fred Schmeckle.)

Yudchitz said he got the inspiration for the structure from pictures of an interpretive center that Zimmerman had brought back from a trip to Jeffers Petroglyphs in southwestern Minnesota.

Yudchitz is proud of the trailhead shelter. It is rare that clients ask architects to "do what they can do," he says - to allow them the freedom to create a structure that is "pure form."

This, along with the fact that he can give back to his family's community, makes the Green Circle Gateway "one of the most important buildings I've ever done," said Yudchitz.

As a work crew from Schmeckle Reserve and the Wisconsin Conservation Corps (WCC) puts the finishing touches on the structure, the Stevens Point Parks and Recreation Department will begin landscaping. The WCC will construct the new boardwalk and trails this fall, and UW-SP College of Natural Resources graduate students will design interpretive signs for the trailhead.

Portage Co Gazette 9-14-01

Linking the Natural Features of Our Hometown on the River

It is designed to link green areas that surround the greater Stevens Point community and to connect with trails in Plover, Whiting, Hull and neighboring areas.



In 1986, the President's Commission on Americans Outdoors called for local greenways to "provide people with access to open spaces close to where they live."

The Green Circle is close to thousands of residents so that all may enjoy it. It is also close to history since it follows the Wisconsin and Plover Rivers where the community was born during the logging era. Centuries ago, Indians walked these same paths.

We have not lost our need to stay in touch with the natural world.....and with our history.



Photos by: Doug Wojcik, Dave Aplin, Mike Brisson.



Walking the Path of Community Cooperation

The Green Circle depends on cooperation. It has brought together all neighboring municipalities and the people of Portage County in the unifying spirit of nature, history, wellness and enjoyment.

It is possible because of the support of private landowners, local governmental units, the Chamber of Commerce, UW-Stevens Point, public utilities, state agencies and citizens of our great community.

Like to Get Involved?

Since The Green Circle is a community project, help and support is welcomed from everyone — individuals, civic groups, schools, clubs, corporations.

For information, call one of these committee members: Dan Trainer, Gerry Ernst, George Rogers, Jim Rothenbach, Tom Schrader or Roy Menzel. Or call the Chamber of Commerce office at 344-1940.

Tax deductible gifts may be directed to:

The Green Circle-Stevens Point Area Foundation
2442 Sims Avenue
Stevens Point, WI 54481
(The tax exempt number is ES 28538)

*Neighbors, working together
to keep The Green Circle
on the Right Path.*



On the Right Path.

Stevens Point Area's
24-mile Nature Trail
circles through the beauty of river shores,
trees, plants, wild birds and animals...
recalling history of the huge Pinery,
Indian camps, pioneer settlements;
and lore of the
Wisconsin and Plover Rivers.....

Bukolt Park — access to a variety of recreational activities.

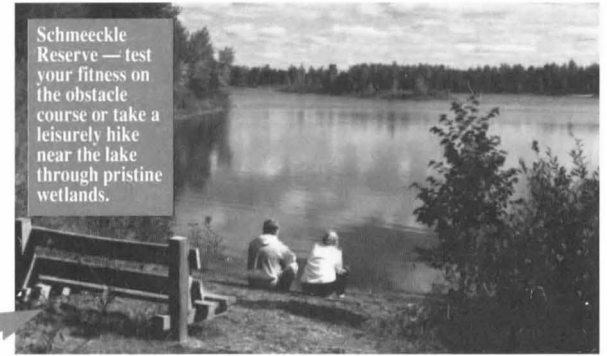


The Green Circle Is for Everybody

This greenway is for residents and visitors of all ages. It places natural areas at our doorstep anytime — for hiking, bicycling, jogging, cross-country skiing, canoeing, wild life watching, fishing, family outings, and just plain solitude.

The Green Circle preserves our natural areas while assuring their safe use for present and future generations.

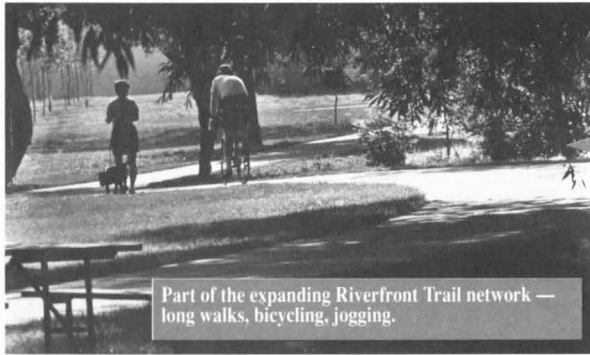
Schmeckle Reserve — test your fitness on the obstacle course or take a leisurely hike near the lake through pristine wetlands.



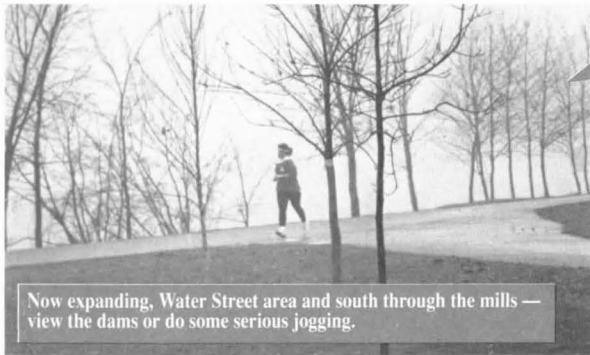
Izaak Walton area — featuring part of over 11 miles of cross-country ski trails.



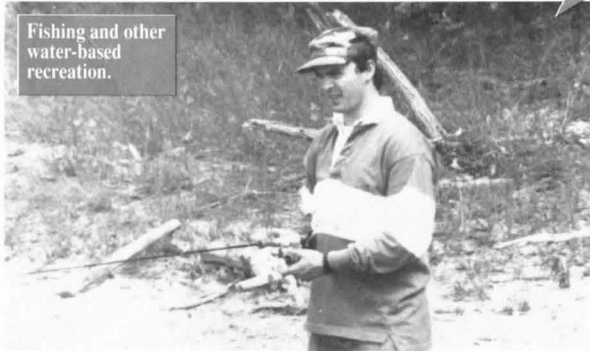
Part of the expanding Riverfront Trail network — long walks, bicycling, jogging.



Now expanding, Water Street area and south through the mills — view the dams or do some serious jogging.



Fishing and other water-based recreation.



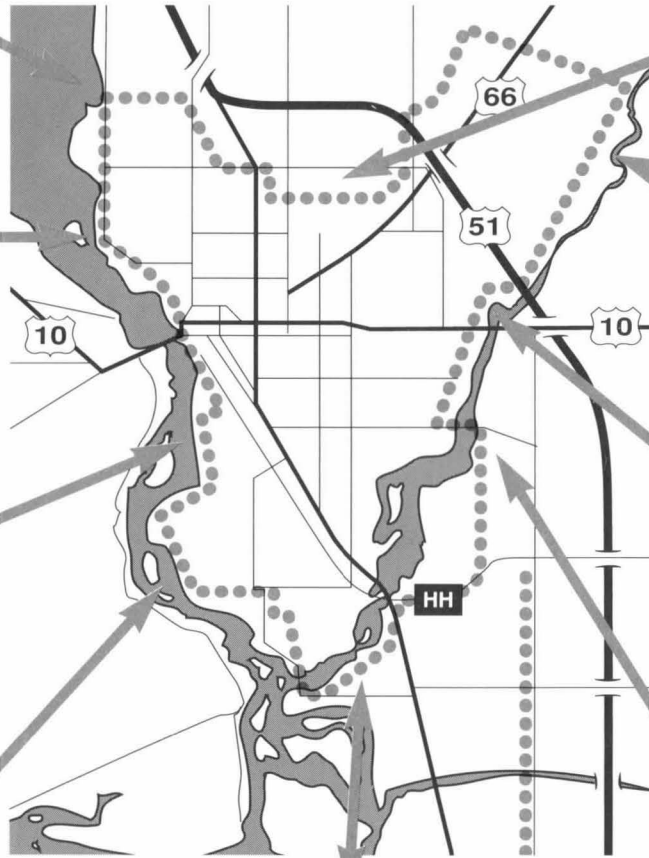
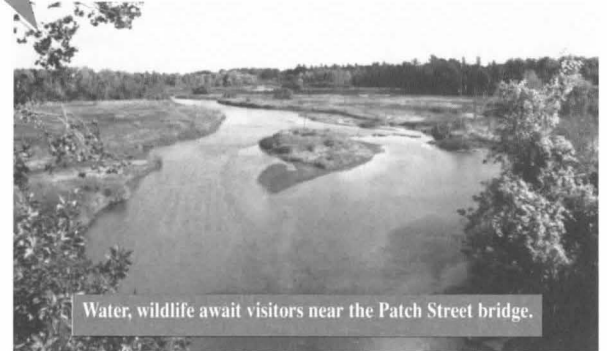
School groups enjoy countless nature study opportunities.



1,000 ft. of boardwalk will guide hikers through the Plover River flood plain.



Water, wildlife await visitors near the Patch Street bridge.



JUNE 1, 1996

SERVING THE RIVER CITIES



STEVE DAVIS/Daily Tribune

A pedestrian walks during the noon hour this week on a portion of The Green Circle near Main Street in Stevens Point along the Wisconsin River.

Trail circles from park to park

Final link complete in hiking/biking trail around Stevens Point river area

By TROY LAACK
Tribune Staff Writer

STEVENS POINT — A railroad underpass is the final link to a 24-mile hiking and biking trail called The Green Circle that connects several parks in the Stevens Point area.

John Jury, chairman of the celebration committee, said the idea was born 10 years ago after Pfißner/Pioneer Park was developed.

That park is adjacent to Bukolt Park and the two sites became popular because "it gave the river back to the people," he said.

There was one problem. It wasn't long enough.

Jury dug out a map of the area and came up with the idea that the parks along the Wisconsin and Plover rivers and the

northern portion of the city could be connected via a hiking and biking trail.

A committee was formed to develop the idea into reality.

George Rogers, chairman of The Green Circle Committee, said the group has been meeting once a week for the past seven years to work out the details of the plan.

It had to get the cooperation of 25 landowners, public and private, to complete the circle.

Rogers said Dan Trainer, a retired dean of the University of Wisconsin-Stevens Point College of Natural Resources, along with Bill Werner, who doesn't live in the area anymore, started The Green Circle Committee.

Roy Menzel, a retired public relations consultant and author, wrote a book about the trail that provided \$10,000 in seed money for the group.

Private donations, along with grants from the Wisconsin Department of Natural Resources and Department of Transportation, provided fund-



ing for the project.

The final link of the railroad underpass near Patch Street and Iverson Park Trail for a long time seemed too costly to fulfill, according to Menzel.

"It was to be our only high-cost hurdle," Menzel said.

"There were also many, many approvals required from state and federal agencies, corporations and municipalities," he said.

The group originally wanted to call it Cooperation Circle because of the cooperation it took from local governments, the state and private landowners to complete the path, Jury said.

"The committee came up with The Green Circle because that's what it is," Jury said.

"The trail, all but two miles, is green corridor. It's real nice

for a two-hour bike ride or a leisurely walk."

The group has already observed that people will take care of the trail, Jury said.

The trail is officially being turned over to local governments and their parks departments today.

There are 11 organizations that have agreed to maintain two-mile segments of the trail.

The groups and the segments are: Kiwanis Club, Riverfront Trail; Rotary Club, River Pines Trail; Junior Woman's Club, Holiday Trail; Wellness Commission, University Trail; Woman's Club, Iverson Park Trail; Telephone Pioneers, McDill Trail; CWA Life Underwriters, Whiting Park Trail; morning Optimists, Moses Creek Trail; Izaak Walton's, Plover River Trail North; Big Brothers/Sisters, Plover River Trail South; and Crossroads Health, bridge to Arlington Place.

The trail still needs a group or groups to maintain Paper Mill Trail, Hoover Road and Stagecoach Trail.

GREEN CIRCLE TRAILS NOW OPEN (Feb.1, 1992)

A. Riverfront Trail

Trail starts near the Chamber Office at the Wisconsin River and goes North about 1.3 miles to Bukolt Park. Park at Bukolt or near the Chamber lot. (Hiking and Bicycling)

B. River Pines Trail

Starts from the western parking lot of River Pines (which is at the western end of Sherman Ave.) Parallels the river about 1.6 miles to the City Wastewater Plant at the west end of Bliss Ave. where parking is permitted. (Hiking and Bicycling)

C. University Trail

The Schmeeckle Reserve trail begins near the northeast corner of Michigan Ave. and Maria Drive. Park on Maria Drive. The trail loops University Lake and can be hiked about one mile to the Visitors Center which is a block east of Michigan Ave. on North Point Drive. There is parking at the Center also. (Hiking)

D. Plover River/Wellfields Trail

This 1.8 mile loop starts at the east end of Maria Drive at Barbara's Lane where there is a parking lot. Go east on Highway 10 to Green Ave. in Park Ridge. Turn north to Jordan Lane then east to Janick circle which becomes Barbara's Lane. (Hiking)

E. Plover River/Iverson Park

This 1.3 mile trail loops from the parking lot in Iverson Park at the foot of Jefferson Street. Go to Park Ridge on Highway 10 East, turn south on Sunrise Ave. to Hillcrest Dr. Turn east through the gateway downhill to the parking lot. (Hiking)

F. Plover/Hoover Avenue Trail

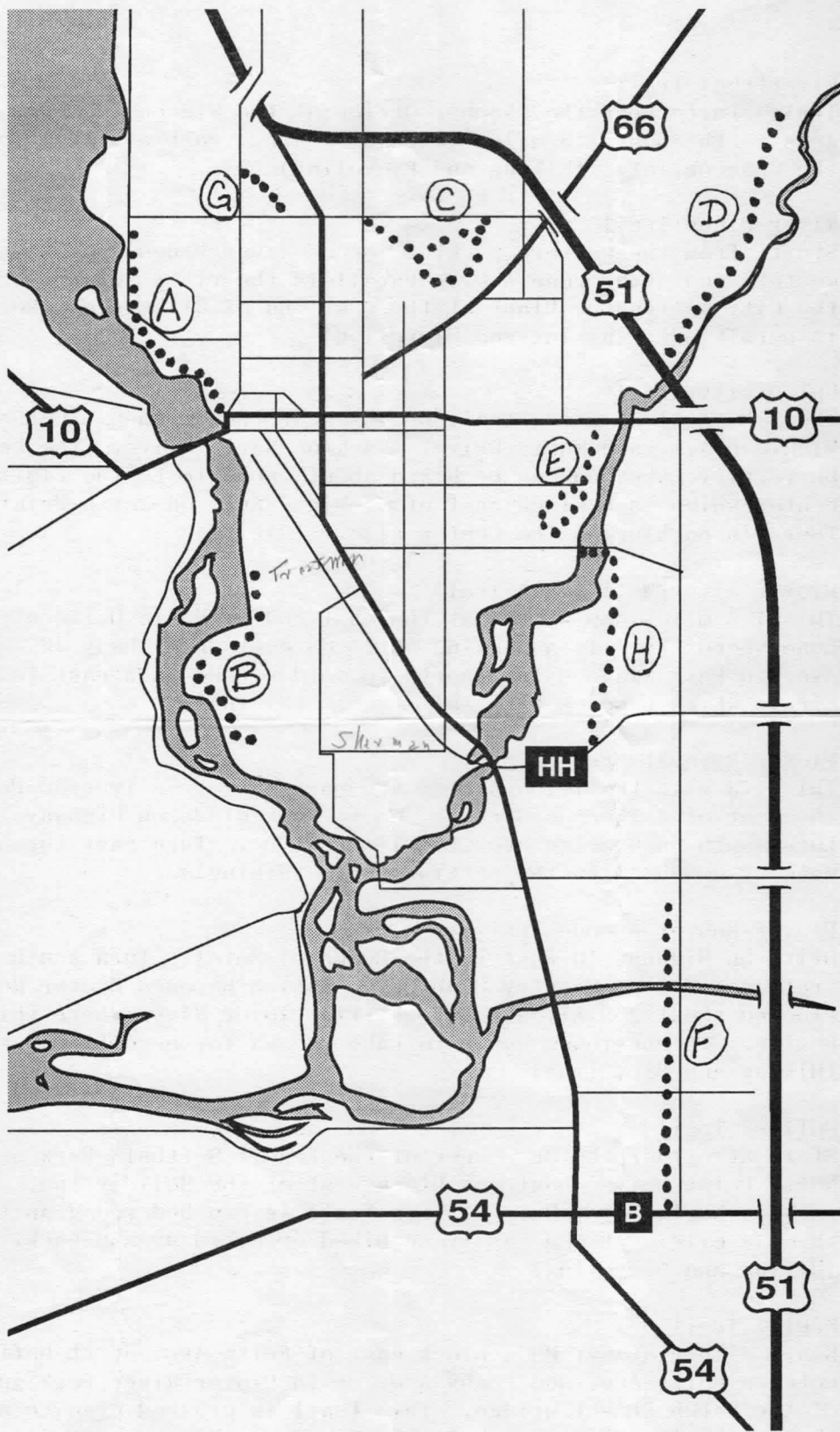
Drive on Highway 10 East to the Budgetel Motel. Turn south at the traffic light on Country Club Drive (which becomes Hoover Road). Proceed about 2.5 miles to the Little Plover River where this trail begins. It continues south to Lake Pacawa for more than 2 miles. (Hiking and Bicycling)

G. Holiday Trail

Start at either the SE corner of the Zenoff Softball Park or off North Point Drive about one block West of the Holiday Inn. Okay to park on North Point Drive. This trail is crushed red granite about .9 of a mile. It can easily be hiked or biked up-and-back. (Hiking and Bicycling)

II. McDill Trail

Start either at Hwy HH a block east of Feltz Ave. or at Heffron St. between Feltz Ave. and Leahy Ave. or in Plover River Park just east of the Patch Street bridge. This trail is crushed granite and extends about 1.8 miles from Patch St. to Hwy HH. (Hiking, Bicycling and Skiing)



5-25-96
MAY 25 1996

Making it fit

Green Circle was once puzzle with many parts

An upcoming celebration will salute completion of the Green Circle Trail here.

Completing the circle meant clearing a few hurdles and shaking a lot of hands, members of the Green Circle Committee said.

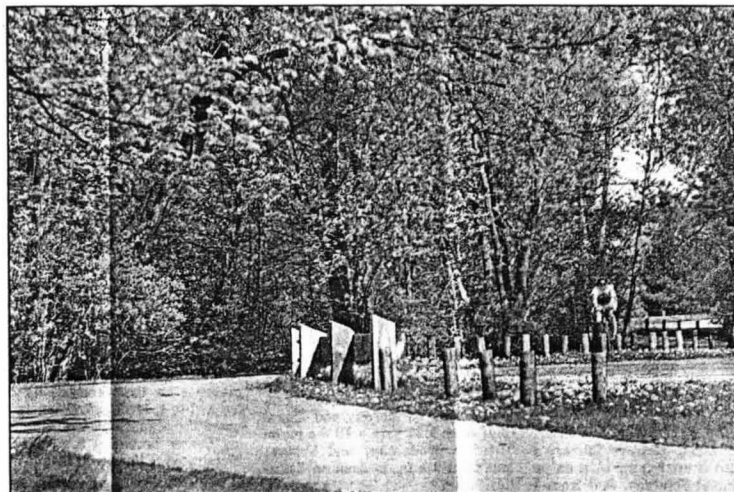
Agreements had to be forged with companies like Sentry Insurance, the University of Wisconsin-Stevens Point and private property owners like Larry Fritsch, whose land surrounds much of the land around the Stagecoach Trail.

It was Fritsch who came to the Green Circle Committee on his own volition when he heard about the project in the early stages.

"It had to be early. There wasn't very much of the trail done at that time," Fritsch said. "I approached Roy Menzel. They wanted to go down (Old) Wausau Road; I felt Wausau Road was too dangerous."

So Fritsch offered the committee some easement through his (see Green Circle, page 3)

■ Connection, page L1



A BICYCLIST ROUNDS a corner on the Green Circle Trail between Bukolt and Pfiffner Pioneer parks. (Journal photo by Doug Wojcik)

Green Circle (continued from page 1)

land northeast of the Old Wausau Road-North Point Drive intersection, with some rules as to how the trail should look.

"I expect the trail to be clean. And no gravel, just wood chips, mostly to keep the vandalism down," he said. "I'm always walking it, and check for things left there. I walk the trail at least once a week."

Green Circle Committee Chairman George Rogers said it probably helped to have a private committee of volunteers pulling the project together rather than a government entity.

"Some people are a little more accepting of dealing with a private party instead of government," Rogers said.

At the outset, several byways now part of the Green Circle, like the Riverfront Trail and the system through Schmeeckle Reserve, already were. So "the function of the committee has been linking them," Rogers said.

And what might have been a formidable task, considering all the parties involved, was made easier by the project's sense of community, committee member Dan Trainer said.

"People were all so cooperative, really," Trainer said. "It was a matter of getting in touch with the right people and explaining the situation. Everybody went along pretty well with it."

That includes the Department of Natural Resources, one of many government agencies that tend to get a bad rap because of the regulations they impose, Trainer said. In working with the DNR over trail segments running through wetland areas, "They cooperated," Trainer said. "They tried to help us to make it work."

The way the committee figured it, Menzel said, they would try to accomplish the possible tasks first and go from there. But then some of the impossible things started to fall together, too, namely dealing with those state agencies and constructing the railroad underpass near Patch Street and the Plover River — a nearly \$259,000 project.

"But the funding really helped there," Menzel said. The project was completed with grants of \$206,000 from the Department of Transportation, \$10,000 from Consolidated Papers Inc. and \$20,000 from Portage County. The Green Circle Committee's account took care of the final \$23,000.

"If we'd have seen some of the hurdles early in the game, we might not have kept up the search," Menzel said.

But hey, it's the community's job to give back to itself and clear those hurdles for projects like this, Fritsch said.

"I believe one should give back to the community whenever possible," Fritsch said.

RESERVATION FORM — THE PARTY PREMIERE

7:30 P. M. November 12, 1989 Stevens Point Country Club

For reservations, please enclose your tax-deductible check to S.P.A.F.-Green Circle Fund, P. O. Box 201, Stevens Point, WI 54481. \$30 for two persons, \$20 for one person. This includes a donation to The Green Circle, refreshments and one autographed copy of "Hometown on the River." Additional books will be available at the party.

Please reserve _____ places for _____
NAMES

ADDENDUM OF UNSUPPORTED COMMITTEE SUGGESTIONS:

1. For \$100, guests don't have to take the book.
2. For \$200, guests don't have to come at all!

FRIENDS OF THE GREEN CIRCLE

_____ \$5,000 AND OVER
_____ \$1,000 AND OVER
_____ \$500 AND OVER
_____ \$100 AND OVER
_____ \$25 AND OVER

Names of donors of \$100 or more
will be added to the Honor Plaque
at the River Front.

PAID NOW \$ _____

NEXT YEAR \$ _____

*All
donations
are
tax-
deductible*

NAME _____

Please print your name(s).

ADDRESS _____

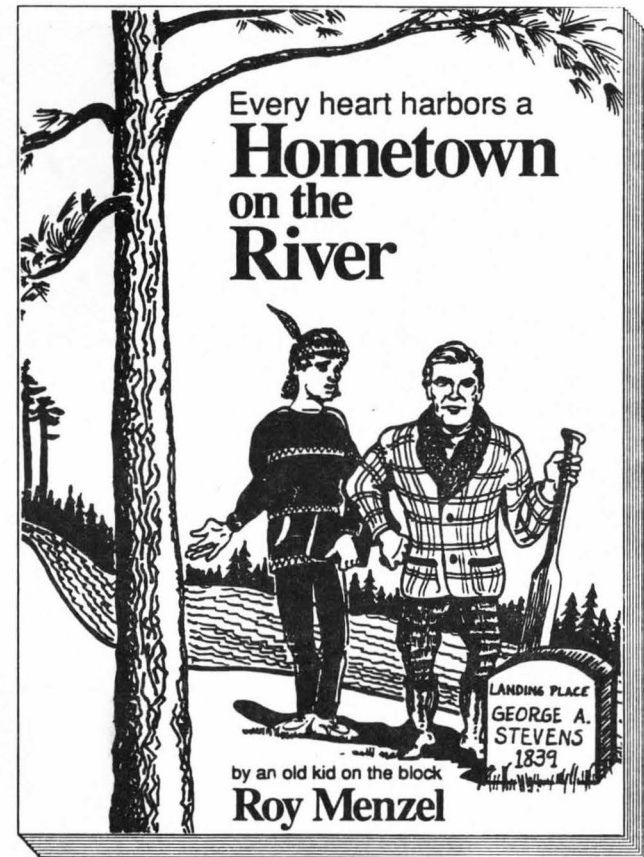
Please make your check payable to THE GREEN CIRCLE - Stevens Point Area Foundation. Enclose check with this form.

Send to THE GREEN CIRCLE, 2442 Sims Ave., Stevens Point, WI 54481

THANK YOU!!



LINKING NATURAL FEATURES OF OUR AREA FOR EVERYONE TO ENJOY!



*You are cordially invited to
The Party Premiere*

FIRST PUBLIC PRESENTATION OF

"Hometown on the River"

(Roy Menzel's book on Stevens Point People)

and the exciting new plan for

The Green Circle

(The Trail System soon to encircle Stevens Point)



Logo design courtesy of Brawley Street Arts

TIME AND PLACE

7:30-9:00 P. M. Sunday, November 12, 1989.

Stevens Point Country Club.

Casual, cabaret style. Soft lights and background music.

Wine and beer, courtesy of Copps/IGA

PROGRAM

I

Several readings by the author from "Hometown on the River":

*The Ghost of George Stevens
Bertha Glennon, Queen of English
Carl Jacobs and Guy Rogers Tangle Horns
Emmons Thorske, Yuss a Yumper*

II

Introduction to The Green Circle. A visual "walk" of the beautiful river and woods trails presented by Tom Schrader and Dan Trainer.

III

Readings from the book:

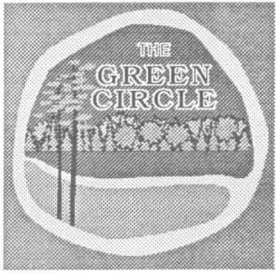
*Frances Shows Joe A Thing or Two
Ruth Salzmann, First Women's Libber
Governor Lee Sherman Dreyfus
King of Late Arrival: Jack Shannon
A Letter to John Joanis*

ADDENDUM OF GOOD NEWS

All proceeds from The Party Premiere are donated to development of The Green Circle. Roy Menzel is donating proceeds from local sale of his book to this project and other river beautification projects. The Journal Printing Company has already donated its \$5,000 cost of printing. Fritz and Dan Menzel have donated \$2000 of pre-press and typesetting costs.

ADDENDUM OF CAUTION

Since seating is limited to 125, please return your reservation by November 6. Thank you.



THE GREEN CIRCLE

LINKING NATURAL FEATURES OF THE STEVENS POINT AREA

August 29, 1995

Dear Friends of the Green Circle:

Our Green Circle Committee was hoping that the last link in the Circle could be completed without needing your financial support again after our initial plea five years ago.

Now, the Railroad Underpass Project (at Patch Street and the Plover River) has brought in a bid considerably higher than our original estimate. We asked for re-bids and have received a low bid of \$222,759.00 from Somers Companies. The other bids were \$223,662.00 and \$270,626.00. The low bid is fair and reasonable and has been approved by all City committees and the Council. We will begin the project as soon as possible.

Because this is our one costly project, we have obtained a \$140,000.00 Federal grant from the Wisconsin DOT plus \$25,000.00 from Portage County and \$40,000.00 from City Room tax and private funds. Donations have come in from an earlier letter to corporations, but we still need \$35,000.00 in private gifts. This will mean we can finish the Underpass and also complete vital refinements on the 24 mile Circle, such as parking areas, small bridges, culverts, boardwalks, improved safety and routing, educational pamphlets and signs.

Public acceptance and enthusiasm for the unique nature trail has been tremendous. The Underpass design will mean a very attractive boardwalk under the tracks and for over 300 feet overlooking the River connecting Iverson Park with the new McDill Trail. It will be a scenic highlight of the beautiful trail system. It will provide safety and convenience for hikers and bikers.

Please make your tax deductible contribution to SPAF-Green Circle, P.O. Box 201, Stevens Point. If you wish to split your gift now and in 1996, this will not delay the project.

Thank you so much for helping make the Green Circle a first-class, lasting legacy for all the people in our great community.

George
George Rogers, Chair

Roy
Roy Menzel, Secretary

GEORGE ROGERS, CHMN

DAN TRAINER

ROY MENZEL

TOM SCHRADER

GERRY ERNST

JIM ROTHENBACH

2442 SIMS AVE. STEVENS POINT, WI 54481

Guest Speaker: Roy Menzel - Green Circle Trail

The idea for the Green Circle came from John Jury. A number of years ago he suggested connecting the city parks with a trail. The idea has grown into a 24-30 mile trail which includes 6 municipalities -- the only trail like it in the state. The trail also has the cooperation of over 20 corporate and private land owners who have given permanent right of way to the trail. These property owners are protected against liability concerns by a law that states if private lands are used for the public, the private owners cannot be held accountable for accidents or injuries.

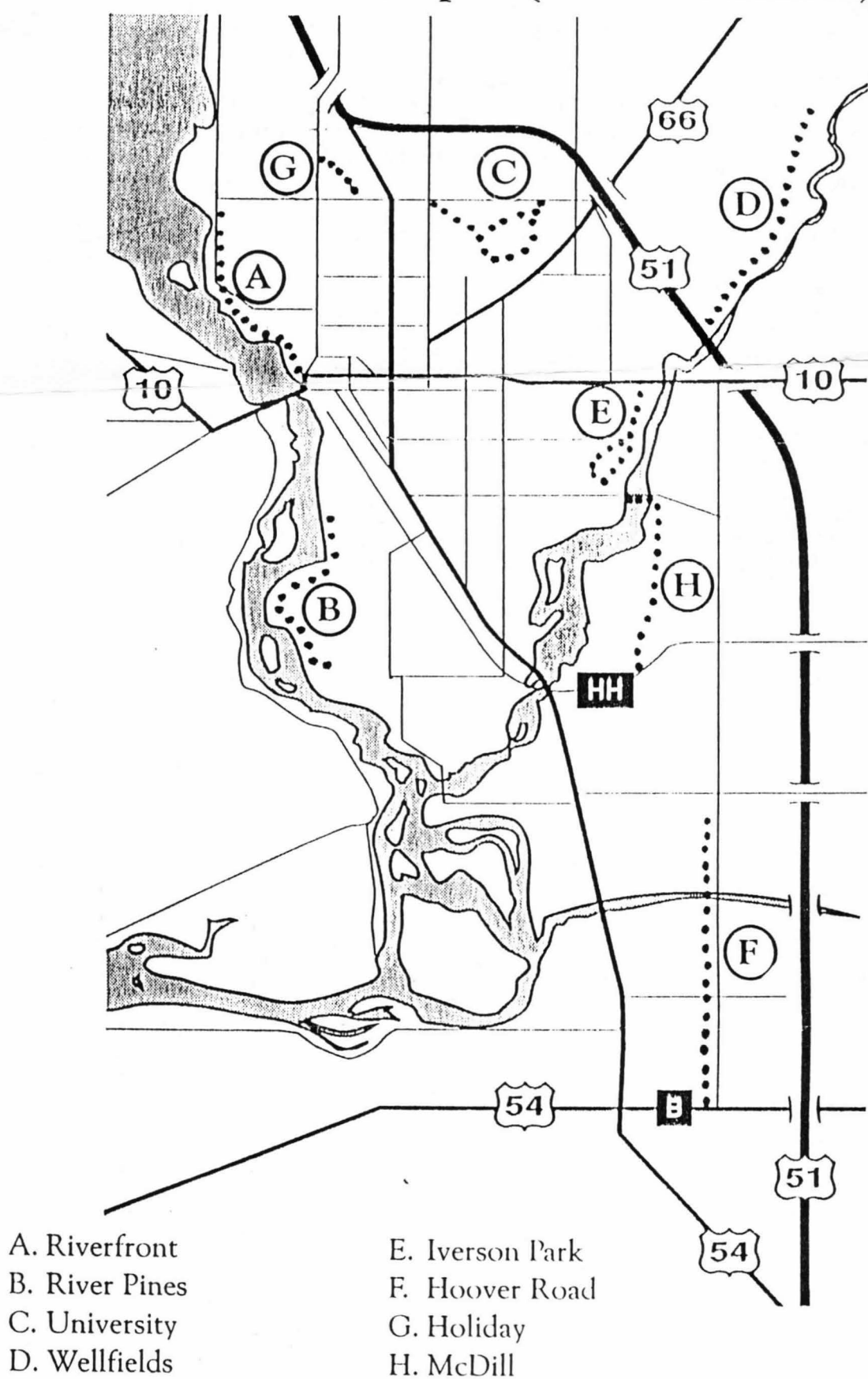
Sections of the trail that are finished are noted on the enclosed map. Once completed the trail will be marked with hand carved signs done by UWSP students. There will also be trailhead signs similar to the one on the riverfront near the bandshell. Construction began in 1989 involving workers from parks departments, county, city and surrounding municipalities. 96% of the approvals have been obtained and the remaining are expected soon. 90% of the trail will be completed by this fall with the remaining done in 1994. Seven weeks of Conservation Corps work time is assigned to the Green Circle for this summer and fall which will help with completion.

Trail maintenance and supervision will be handled by area organizations using an "Adopt a Trail" format. There will also be Trail Patrols to survey trails and report violations of trail use to the police. The county has a law allowing fines up to \$127.00 for violations or damage to the trail.

Funds to construct the trail have come from many sources: a mini-fund drive = \$40,000; proceeds from the book "Hometown on the River" = \$12,000; City Room Tax = \$50,000; County funds = \$31,000; Village of Whiting = \$1,000; DNR Grant to construct the bridge over the Plover River = \$30,000. About \$35,000 is needed yet to complete the trail. Contact Roy Menzel if you have funds to spare.

Other developments have sprung out of the efforts with the Green Circle Trail. Plover wants their trail to join up with the Green Circle, and the Highway Department will be adding an 8 ft. trail along Hwy. 66 all the way to Jordan Park which will tie in with the University Trail.

Green Circle Trails Now Open (As of December, 1992)



LINKING THE NATURAL FEATURES OF OUR AREA

GREEN CIRCLE TRAILS NOW OPEN (May 15, 1991)

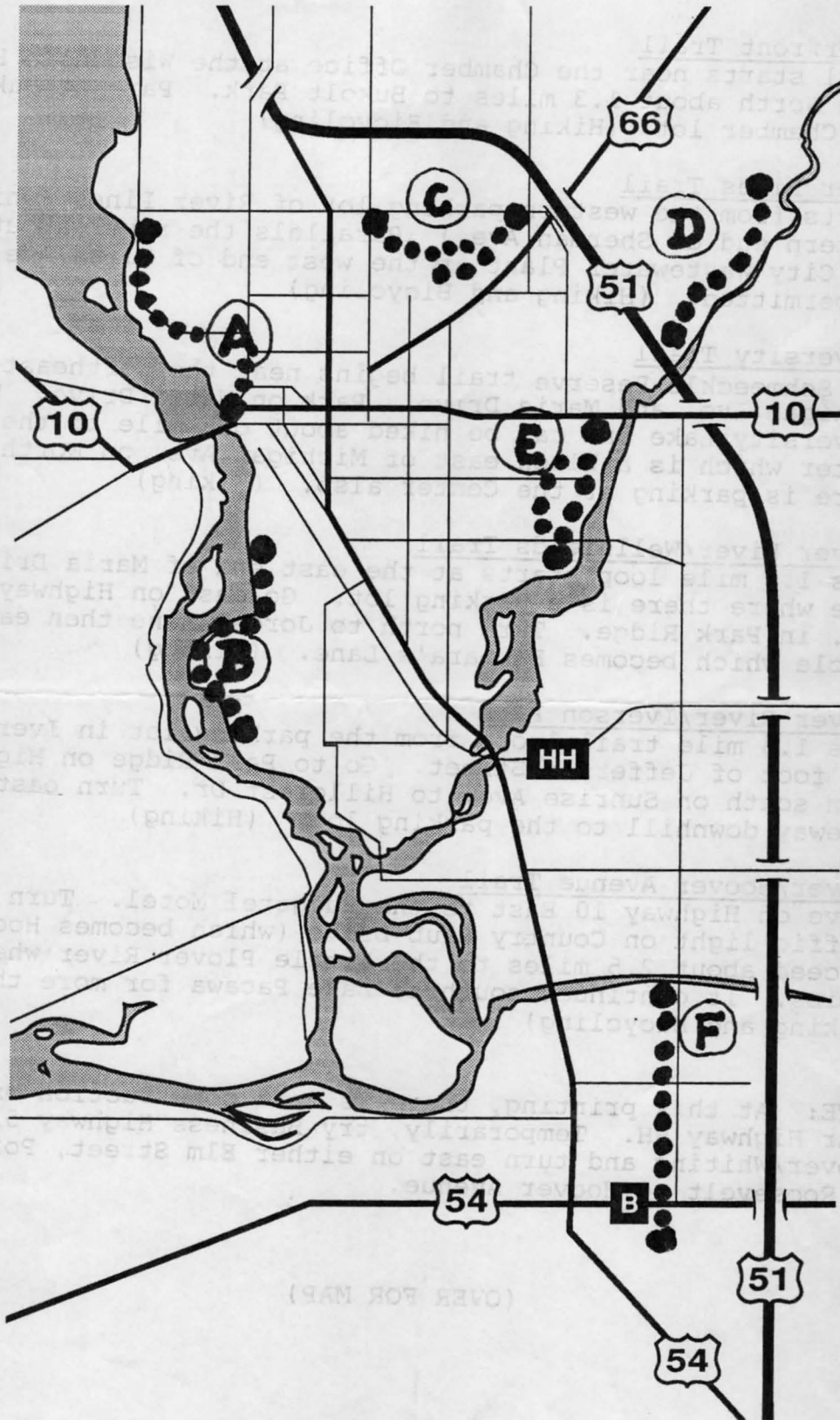
- A. Riverfront Trail
Trail starts near the Chamber Office at the Wisconsin River and goes North about 1.3 miles to Bukolt Park. Park at Bukolt or near the Chamber lot. (Hiking and Bicycling)
- B. River Pines Trail
Starts from the western parking lot of River Pines (which is at the western end of Sherman Ave.) Parallels the river about 1.6 miles to the City Wastewater Plant at the west end of Bliss Ave. where parking is permitted. (Hiking and Bicycling)
- C. University Trail
The Schmeckle Reserve trail begins near the northeast corner of Michigan Ave. and Maria Drive. Park on Maria Drive. The trail loops University Lake and can be hiked about one mile to the Visitors Center which is a block east of Michigan Ave. on North Point Drive. There is parking at the Center also. (Hiking)
- D. Plover River/Wellfields Trail
This 1.8 mile loop starts at the east end of Maria Drive at Barbara's Lane where there is a parking lot. Go east on Highway 10 to Green Ave. in Park Ridge. Turn north to Jordan Lane then east to Janick circle which becomes Barbara's Lane. (Hiking)
- E. Plover River/Iverson Park
This 1.3 mile trail loops from the parking lot in Iverson Park at the foot of Jefferson Street. Go to Park Ridge on Highway 10 East, turn south on Sunrise Ave. to Hillcrest Dr. Turn east through the gateway downhill to the parking lot. (Hiking)
- F. Plover/Hoover Avenue Trail
Drive on Highway 10 East to the Budgetel Motel. Turn south at the traffic light on Country Club Drive (which becomes Hoover Road). Proceed about 2.5 miles to the Little Plover River where this trail begins. It continues south to Lake Pacawa for more than 2 miles. (Hiking and Bicycling)

NOTE: At this printing, there is road construction on Hoover Road near Highway HH. Temporarily, try Business Highway 51 South to Plover/Whiting and turn east on either Elm Street, Porter Road, or Roosevelt to Hoover Avenue.

(OVER FOR MAP)

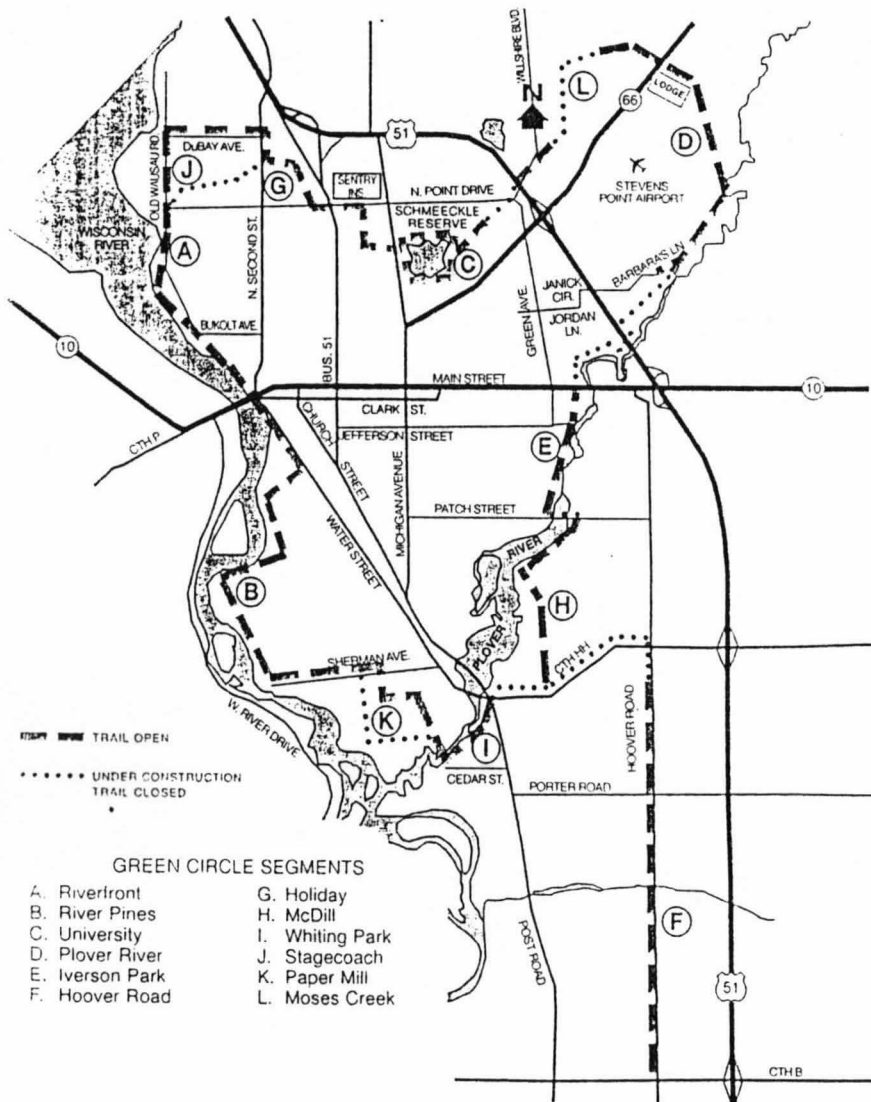
THE GREEN CIRCLE

C.1



(OVER FOR DIRECTIONS)

Green Circle Trails Now Open (January 1, 1994)



A. Riverfront Trail

Trail starts near Bank One where Hwy. 10 crosses the Wisconsin River. Goes North about 1.3 miles through Bokolt Park. Park at Bokolt or near the Bank One/Chamber lots. (Hiking and Bicycling)

B. River Pines Trail

Starts from the western parking lot of Stevens Point Nursing/Rehab Center (which is at the western end of Sherman Ave.) Parallels the river about 1.6 miles to the City Wastewater Plant at the west end of Bliss Ave. (where parking is permitted) and continues up Bliss Ave. to Tamarack to Wisconsin to Water St. to Bank One where the Riverfront Trail begins. (Hike, bike)

C. University Trail

Can be accessed in three spots: 1. On the south side of North Point Drive, across from Sentry Insurance 2. At the northeast corner of Michigan Ave. and Maria Drive 3. At Schmeeckle Reserve Visitor Center on North Point Drive about a block east of Michigan Ave. Trail loops University Lake. (Hiking)

D. Plover River Trail

Access in two spots: 1. At the east end of Barbara's Lane. (Go east on Hwy 10 to Green Ave. in Park Ridge. Turn north to Jordan Lane then east on Janick Circle which becomes Barbara's Lane.) 2. East on Hwy 66 past the airport and Toran Rd. to the Ski Lodge just past the Isaac Walton entrance on the south side of Hwy 66. Trail goes 6.2 miles. (Hike, bike and ski).

E. Iverson Park Trail

This 1.3 mile trail loops from the parking lot in Iverson Park at the foot of Hillcrest Drive (Jefferson Street). Go to Park Ridge on Highway 10 East, turn south on Sunrise Ave. to Hillcrest Dr. Turn east through the gateway downhill to the parking lot. (Hike, bike, ski).

F. Hoover Road Trail

Drive on Highway 10 East to the Budgetel Motel. Turn south at the traffic light on Country Club Drive (which becomes Hoover Road). Proceed about one mile to Ponderosa St. where this trail begins. It continues south to Lake Pacawa for more than 2 miles. (Hike and bike).

G. Holiday Trail

Start at either the SE corner of the Zenoff Softball Park or off North Point Drive about one block West of the Holiday Inn. Okay to park on North Point Drive. This trail is crushed red granite about .9 of a mile. It can easily be hiked or biked up-and-back. (Hike and bike).

H. McDill Trail

Start either at Hwy. HH a block east of Feltz Ave. or at Heffron St. between Feltz Ave. and Leahy Ave. or on Patch St. just east of the bridge. This trail extends about two miles from Patch St. to Hwy HH. (Bike, hike)

I. Whiting Park Trail

Access in two spots: 1. Near the traffic light corner of McDill Road (Hwy HH) and Post Rd (Business 51) 2. Turn west off Post Road on Cedar St. to the dead end. Trail extends about one mile along the Plover River. (Hiking).

The Green Circle: LINKING NATURAL FEATURES OF THE STEVENS POINT AREA

Beautiful Nature Trails At Our Doorstep

~~Portage Valley Green Circle~~

~~Stevens Point, WI 54481~~

~~Phone: 715/336-5101~~



TRAIL GUIDELINES

- Walkers and runners are permitted on all trails.
- Biking is restricted only on posted areas which prohibit bike use.
- No motorized vehicles are permitted.
- Stay on the trails for safety and privacy.
- No fires of any kind are allowed except in designated park grills.
- Stay alert. Communicate. Slower moving individuals may be startled by faster moving trail users.
- Allow enough room for other trail users to pass.

USERS WITH DOGS

- Dogs must be kept on an 8-foot leash and in control at all times.
- Promptly remove excreta in consideration for other trail users.

WALKERS

- Please be courteous to other trail users.
- When other users pass, stay to your right.
- When in a group, avoid blocking the trail.

BIKERS

- Ride only on trails designated for biking.
- Yield to all other trail users.
- Slow down and pass with care.
- When encountering walkers on narrow trails, stop and wait for them to pass or signal you through.
- Use your bell or horn to announce your presence to walkers well in advance, particularly when approaching from behind.
- Never exceed the 15mph speed limit.
- Slowly approach blind turns in anticipation of other trail users and obstacles that are beyond your view.
- Yield to other bikers traveling uphill.
- Racing or reckless riding is prohibited.
- Walk bikes on boardwalks, steep hills, and narrow bridges.

SKIERS

- Certain trails are kept groomed for skiing.
- Dogs are not allowed on ski trails.
- No racing or ski-skating.
- When others approach, slow down and pass with care.

RUNNERS

- Slow down and allow oncoming walkers to pass on one side of the trail.
- When approaching from behind, alert walkers of your presence and pass carefully on the left.

SOMETHING FOR EVERYONE

This greenway is for residents and visitors of all ages. It places natural areas at our doorstep - for hiking, biking, jogging, cross-country skiing, canoeing, wildlife watching, fishing, family outings, and just plain solitude. The Green Circle preserves our natural areas while assuring their safe use for present and future generations.

GET INVOLVED

Since the Green Circle is a community project, everyone's involvement is welcomed (individuals, civic groups, schools, clubs or corporations).

For more information, contact the Portage County Parks Department at 715.346.1433.

Tax deductible gifts may be directed to:
Community Foundation of
Portage County - Green Circle.
P.O. Box 968
Stevens Point, WI 54481

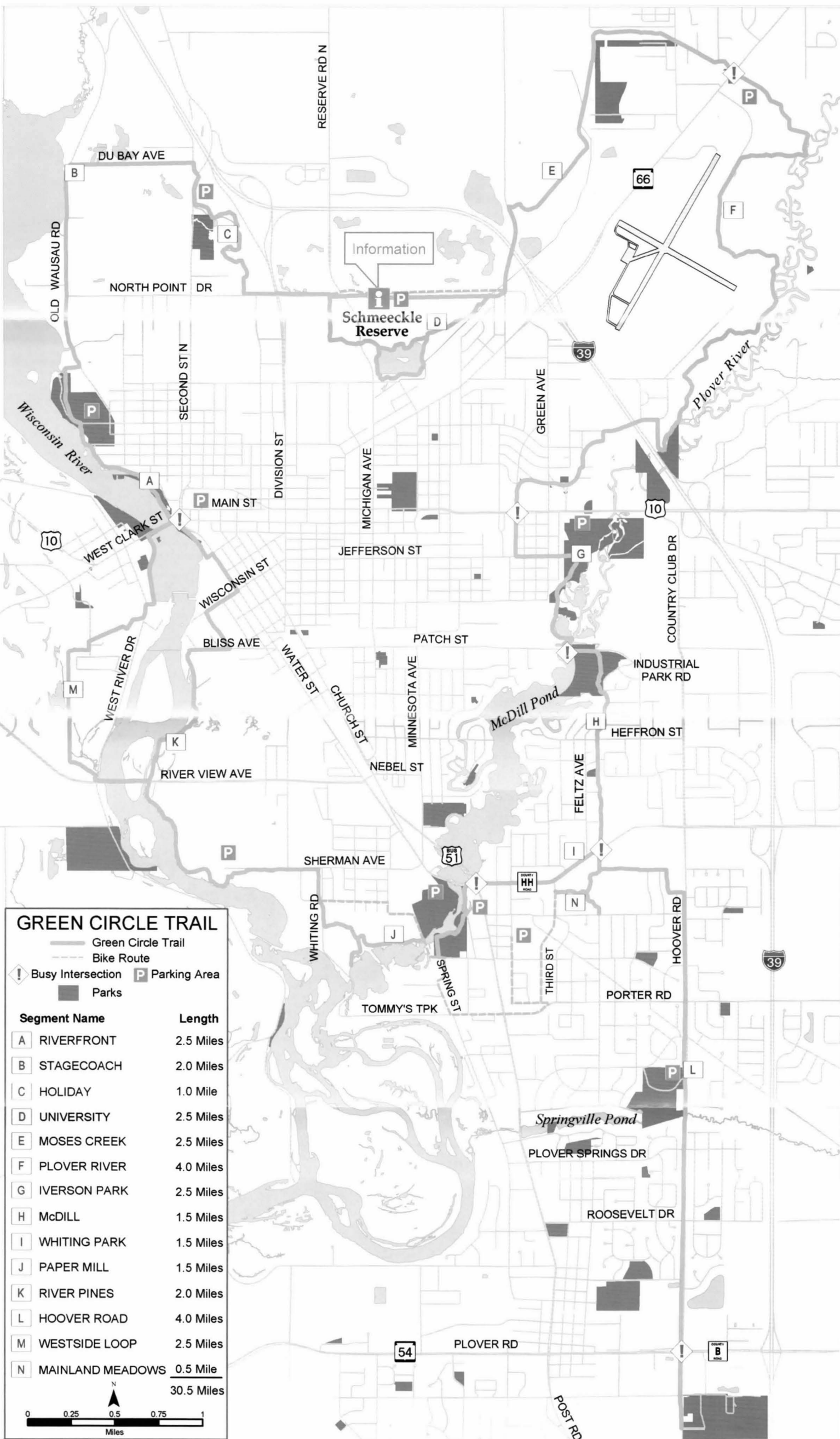
YOU WALKER • BIKER • SKIER • RUNNER ARE HERE

Stevens Point Area's 30.5 Mile Nature Trail circles through the beauty of river shores, trees, wild birds and animals - recalling the history of huge pineries, pioneer settlements, and lore of the Wisconsin and Plover Rivers.

The Green Circle depends on Cooperation. It brings together all the neighboring municipalities, people of Portage County, and visitors in the unifying spirit of nature, history, wellness and enjoyment. It is made possible by the support of private landowners, local governmental units, the Business Council, UW-Stevens Point, public utilities, state and federal agencies, and the citizens of our great community. Here's how you're asked to respect and preserve this unusual resource for all who use it now and in the future.



MAP AND GUIDE



SOMETHING FOR EVERYONE

Besides hiking, running and biking, visitors may use portions of the trail to fish, canoe, photograph, cross-country ski, rollerblade or rest. Most surfaces are crushed granite; some are surfaced with woodchips or blacktop. Some segments are handicapped accessible.

FOR YOUR SAFETY

- No motorized vehicles permitted.
- Stay on the trails for safety and privacy.
- No fires of any kind are allowed except in designated park grills.
- Communicate. Slower visitors may be startled by faster trail users.
- Allow enough room for other trail users.

HOURS

Daily, 6 a.m. - 11 p.m.
Trail is not lit; daytime use is encouraged.

RESTROOMS

Schmeeckle Reserve Visitor Center
Open all year. Daily, 8 a.m. - 5 p.m.

Pfiffner, Bukolt, Iverson and Whiting Parks
Open first weekend in May through second weekend in October



BEFORE YOU START

Foot traffic permitted on all trails. See below for other activities allowed on some trail segments.

HIKERS

- Be courteous to other visitors.
- Keep to right to allow others to pass.
- When in a group, allow room for other visitors.

BIKERS

- Bikes restricted where posted.
- Yield to all other trail users.
- Use your bell or horn to announce your presence to walkers well in advance.
- Never exceed the 15 mph speed limit.
- Approach blind turns slowly to anticipate other trail users and obstacles.
- Racing or reckless riding is prohibited.
- Walk bikes on boardwalks, steep hills, and narrow bridges.

RUNNERS

- Allow oncoming hikers room to pass.
- Always alert hikers as you approach from behind. Pass carefully on the left.

PETS

- Pets must be kept on an 8-foot leash and in control at all times.
- Promptly remove excreta in consideration of other trail users.
- Dogs permitted on most trail segments; not in Schmeckle Reserve.

SKIERS

- Please observe designated trails groomed for skiing.
- Dogs not allowed on ski trails.
- No racing or ski-skating.

GET INVOLVED

The Green Circle is supported by donations from community organizations, businesses, and individuals. Your tax-deductible contribution helps to maintain trail surfaces and boardwalks, build new trail sections, and acquire new green space in the Stevens Point area.

To donate, please send a check or money order to:

Community Foundation of Portage County, Inc.
Green Circle Endowment Fund
PO Box 968, Stevens Point, WI 54481

For more information or to report a safety concern, visit greencircletrail.org or call 715.346.1433.



THE GREEN CIRCLE

THE PATH THAT CONNECTS US



MAP & GUIDE

GREENCIRCLETRAIL.ORG

WHAT IS THE GREEN CIRCLE?

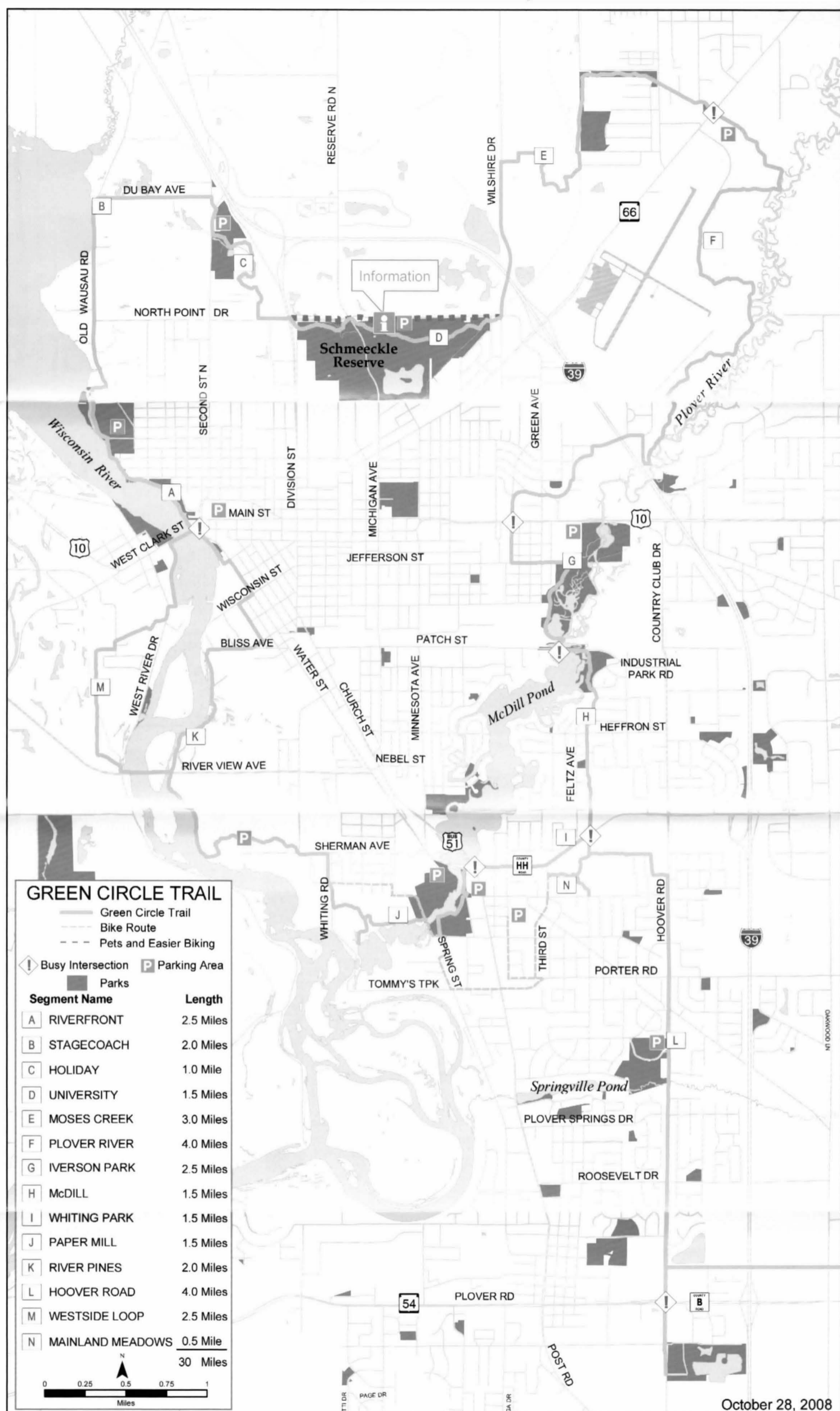
The Green Circle is a 30.5 mile scenic trail that threads through the Stevens Point area providing residents with a unique opportunity to experience nature, history, wellness and leisure in a safe and fun environment.

The trail is the perfect resource for nature enthusiasts of all kinds. Within minutes of most Stevens Point residences, hikers, bikers, runners, cross country skiers and families seeking a quiet reprieve can find solitude and space to pursue their favorite pastimes.

Winding through forests, over wetlands, and along rivers, the Green Circle is reminiscent of days of huge pineries, pioneer settlements, and the lore of the Wisconsin and Plover Rivers.

The Green Circle is managed by the Green Circle Board of the Community Foundation of Portage County, Inc. and made possible through the support of private landowners, local government, UW-Stevens Point, the people of Portage County and many other public and private organizations.





GREEN CIRCLE TRAIL
 Map also available at
greencircletrail.org

With 14 connecting segments, the trail is within 10 minutes of most Stevens Point residents. More than 80% of the Green Circle winds through secluded natural areas. For free parking, restrooms and cold water, start at Schmeckle Reserve's Visitor Center. Staff is available every day from 8:00 a.m. – 5:00 p.m.

TRAIL GUIDELINES

- Walkers and runners are permitted on all trails.
- Biking is restricted only on posted areas which prohibit bike use.
- No motorized vehicles are permitted.
- Stay on the trails for safety and privacy.
- No fires of any kind are allowed except in designated park grills.
- Stay alert. Communicate. Slower moving individuals may be startled by faster moving trail users.
- Allow enough room for other trail users to pass.

USERS WITH DOGS

- Dogs must be kept on an 8-foot leash and in control at all times.
- Promptly remove excreta in consideration for other trail users.



WALKERS

- Please be courteous to other trail users.
- When other users pass, stay to your right.
- When in a group, avoid blocking the trail.

BIKERS

- Ride only on trails designated for biking.
- Yield to all other trail users.
- Slow down and pass with care.
- When encountering walkers on narrow trails, stop and wait for them to pass or signal you through.
- Use your bell or horn to announce your presence to walkers well in advance, particularly when approaching from behind.
- Never exceed the 15mph speed limit.
- Slowly approach blind turns in anticipation of other trail users and obstacles that are beyond your view.
- Yield to other bikers traveling uphill.
- Racing or reckless riding is prohibited.
- Walk bikes on boardwalks, steep hills, and narrow bridges.

SKIERS

- Certain trails are kept groomed for skiing.
- Dogs are not allowed on ski trails.
- No racing or ski-skating.
- When others approach, slow down and pass with care.

RUNNERS

- Slow down and allow oncoming walkers to pass on one side of the trail.
- When approaching from behind, alert walkers of your presence and pass carefully on the left.

SOMETHING FOR EVERYONE

This greenway is for residents and visitors of all ages. It places natural areas at our doorstep - for hiking, biking, jogging, cross-country skiing, canoeing, wildlife watching, fishing, family outings, and just plain solitude. The Green Circle preserves our natural areas while assuring their safe use for present and future generations.



GET INVOLVED

Since the Green Circle is a community project, everyone's involvement is welcomed (individuals, civic groups, schools, clubs or corporations).

For more information, contact the Portage County Parks Department at 715.346.1433.

Tax deductible gifts may be directed to:

Community Foundation of
Portage County - Green Circle
P.O. Box 968
Stevens Point, WI 54481

Brochure Design: Donated by The Noel Group
Printing: Donated by Spectra Print
Paper: Donated by Stora Enso

20M 7-04



Green Circle MAP & GUIDE



YOU
WALKER • BIKER • SKIER • RUNNER
ARE HERE

Stevens Point Area's 30.5 Mile Nature Trail circles through the beauty of river shores, trees, wild birds and animals - recalling the history of huge pineries, pioneer settlements, and lore of the Wisconsin and Plover Rivers.

The Green Circle depends on Cooperation. It brings together all the neighboring municipalities, people of Portage County, and visitors in the unifying spirit of nature, history, wellness and enjoyment. It is made possible by the support of private landowners, local governmental units, the Business Council, UW-Stevens Point, public utilities, state and federal agencies, and the citizens of our great community. Here's how you're asked to respect and preserve this unusual resource for all who use it now and in the future.





Stevens Point
Area's 24 Mile
Nature Trail
circles through
the beauty of
river shores,
trees, wild birds
and animals—recalling
the history of huge pineries,
Indian camps, pioneer
settlements, and lore of the
Wisconsin and Plover Rivers.

something FOR EVERYONE

This greenway is for residents and visitors of all ages. It places natural areas at our doorstep - for hiking, biking, jogging, cross-country skiing, canoeing, wildlife watching, fishing, family outings, and just plain solitude. The Green Circle preserves our natural areas while assuring their safe use for present and future generations.

LIKE TO *get* INVOLVED?

Since the Green Circle is a community project, everyone's involvement is welcomed (individuals, civic groups, schools, clubs, or corporations).

For more information, contact one of these committee members: Dan Trainer, Jerry Ernst, George Rogers, Gary Speckmann, Ron Wessels, Tom Schrader, or Roy Menzel. Tax deductible gifts may be directed to:

**The Green Circle -
Stevens Point Area Foundation
2442 Sims Avenue
Stevens Point, WI 54481**

~~PORTAGE COUNTY PUBLIC LIBRARY~~

~~1001 MAIN STREET~~

Stevens Point, WI 54481

Brochure Design: Steven Radtke, Noel Group

Printing: Spectra Print

15M 2-96

~~WISCONSIN - PORTAGE COUNTY -~~

~~GREEN CIRCLE - 4/96~~



MAP

GUIDELINES

WALKERS · bikers

skiers · RUNNERS

THE *green circle* DEPENDS ON COOPERATION

It brings together all the neighboring municipalities, people of Portage County, and visitors in the unifying spirit of nature, history, wellness and enjoyment. It is made possible by the support of private landowners, local governmental units, the Chamber of Commerce, UW-Stevens Point, public utilities, state and federal agencies, and the citizens of our great community. Here's how you're asked to respect and preserve this unusual resource for all who use it now and in the future.

trail GUIDELINES

- Walkers and runners are permitted on all trails.
- Biking is restricted only on posted areas which prohibit bike use.
- NO MOTORIZED VEHICLES ARE PERMITTED.
- Stay on the trails for safety and privacy.
- No fires of any kind are allowed except in designated park grills.
- Stay alert. Communicate. Slower moving individuals may be startled by faster moving trail users.

SKIERS

- Dogs are not allowed on ski trails.
- Certain trails are kept groomed for skiing.
- No racing or ski-skating.
- When others approach, slow down and pass with care.

USERS *with* DOGS

- Dogs must be kept on a leash and in control at all times.
- Allow enough room for other trail users to pass.
- Promptly remove excreta in consideration for other trail users.

BIKERS

- Ride only on trails designated for biking.
- Yield to all other trail users. Slow down and pass with care.
- When encountering walkers on narrow trails, stop and wait for them to pass or signal you through.
- Use your bell or horn to announce your presence to walkers well in advance, particularly when approaching from behind.
- Never exceed the 10 M.P.H. speed limit. Slowly approach blind turns in anticipation of other trail users and obstacles that are beyond your view.
- Yield to other bikers traveling uphill.
- Racing or reckless riding is prohibited.
- Walk bikes on boardwalks, steep hills, and narrow bridges.

WALKERS

- Please be courteous to other trail users. When other users pass, stay to your right. When in a group, avoid blocking the trail.

RUNNERS

- Slow down and allow oncoming walkers to pass on one side of the trail.
- When approaching from behind, alert walkers of your presence and pass carefully on the left.



GREEN CIRCLE MAP LEGEND

- GREEN CIRCLE TRAIL
- 🚗 PARKING AREA

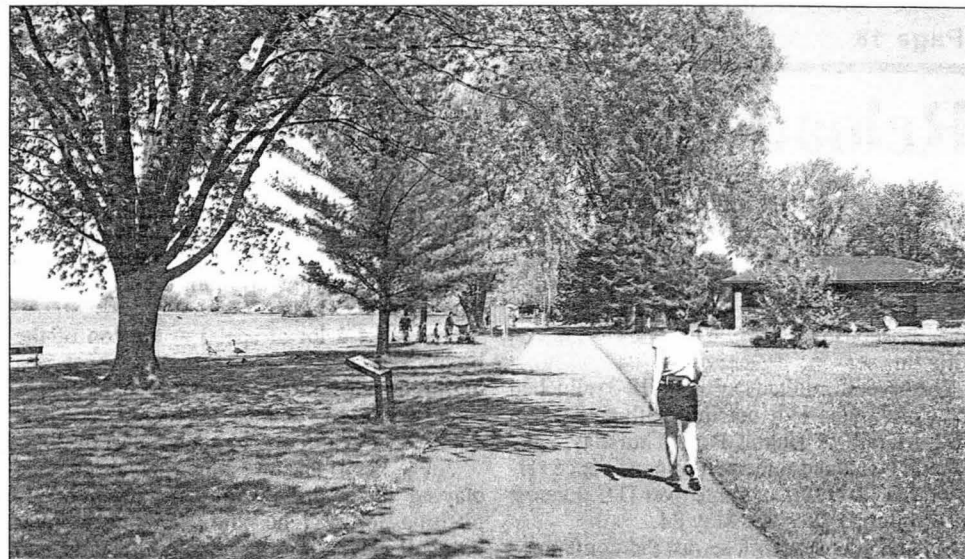
All trails are open for hiking.
Bikers should follow signs for trails designated for biking.

- A** RIVERFRONT
- B** STAGECOACH
- C** HOLIDAY
- D** UNIVERSITY
- E** MOSES CREEK
- F** PLOVER RIVER
- G** IVERSON PARK
- H** MCDILL
- I** WHITING PARK
- J** PAPER MILL
- K** RIVER PINES
- L** HOOVER ROAD

This map is for reference purposes only and should not be construed as 100% accurate.



A group of community members met weekly from 1989 to 1996 at Al's Diner in Stevens Point to plan and develop the Green Circle Trail around the Stevens Point urban area. Gathering in 2009 to recount the early days were, from left, Roy Menzel, Jerry Ernst, Tom Schrader, John Jury and George Rogers. (Contributed photo)



The Green Circle Trail started along the Wisconsin River, connecting Piffner Pioneer and Bukolt parks. The hiking and biking trail now connects seven parks and natural areas in Stevens Point, Whiting and Plover. Eighty percent of the urban population lives within 10 minutes of the trail. (Contributed photo)

Green Circle Trail will celebrate 20th anniversary this June

The Green Circle Trail turns 20 in June. The community is invited to mark the anniversary during Walk Wisconsin Saturday, June 4.

The Green Circle trail consistently ranks near the top of reasons people love to live and play in central Wisconsin.

On Saturday, an event will be held in Piffner Pioneer Park – the “zero mile” mark for the trail – for members of the public to learn about the Green Circle and its history. A photo booth will be available with recreational props. Displays, trail maps and other giveaways will be on hand.

Walk Wisconsin, a noncompetitive walk, is the one community event held annually that follows the entire 26-mile Green Circle. Full, half and quarter-marathon options are available. Register online by May 30 at www.activeportagecounty.com.

Watch for Green Circle trivia along the Walk Wisconsin route. Participants who keep track of how many answers they guess correctly can collect a Green Circle Trail gift at the end of the walk.

Even those who don't participate in Walk

The idea for a circular trail system was conceived by John Jury, who served many years on the Stevens Point Parks and Recreation Commission.

In March 1989, several recently retired community members began discussing a “passive exercise trail.” They included Dan Trainer, former dean of the College of Natural Resources at the University of Wisconsin-Stevens Point (UWSP); Roy Menzel, public relations professional; George Rogers, editor of the Stevens Point Journal; and Jerry Ernst, director of Portage County Parks Department. They met nearly every Friday at Al's Diner, along with Tom Schrader, Stevens Point parks director, new county parks director Gary Speckmann and many others through the years, Jury said.

They envisioned, planned and developed a trail connecting parks and green spaces in Stevens Point, Park Ridge, town of Hull, Whiting and Plover.

With tireless commitment, the volunteers raised money, negotiated with landowners for use of their property and coordinated place-

Parks Department staff, with assistance from Stevens Point Parks and Schmeckle Reserve staff. Annual donations from individuals and

businesses support trail construction and maintenance. For more information, visit www.greencircletrail.org.

Hughes Hints



Matt Says...
“Don't lose your cool, have us check your A/C today!”



A group of community members met weekly from 1989 to 1996 at Al's Diner in Stevens Point to plan and develop the Green Circle Trail around the Stevens Point urban area. Gathering in 2009 to recount the early days were, from left, Roy Menzel, Jerry Ernst, Tom Schrader, John Jury and George Rogers. (Contributed photo)

Green Circle Trail will celebrate 20th anniversary this June

The Green Circle Trail turns 20 in June. The community is invited to mark the anniversary during Walk Wisconsin Saturday, June 4.

The Green Circle trail consistently ranks near the top of reasons people love to live and play in central Wisconsin.

On Saturday, an event will be held in Piffner Pioneer Park – the “zero mile” mark for the trail – for members of the public to learn about the Green Circle and its history. A photo booth will be available with recreational props. Displays, trail maps and other giveaways will be on hand.

Walk Wisconsin, a noncompetitive walk, is the one community event held annually that follows the entire 26-mile Green Circle. Full, half and quarter-marathon options are available. Register online by May 30 at www.activeportagecounty.com.

Watch for Green Circle trivia along the Walk Wisconsin route. Participants who keep track of how many answers they guess correctly can collect a Green Circle Trail gift at the end of the walk.

Even those who don't participate in Walk Wisconsin can celebrate the Green Circle's anniversary throughout June. Visit www.facebook.com/GreenCircleTrail/ for more information on the Green Circle. In June, community members are encouraged to share photos and videos on the Facebook page to show their favorite part of the trail.

“The Green Circle Trail is a community treasure, with more than 200,000 visits each year. Join in celebrating its first 20 years, and keeping it one of the best trails in the Midwest,” said Nick Schultz, Green Circle Board president.

The idea for a circular trail system was conceived by John Jury, who served many years on the Stevens Point Parks and Recreation Commission.

In March 1989, several recently retired community members began discussing a “passive exercise trail.” They included Dan Trainer, former dean of the College of Natural Resources at the University of Wisconsin-Stevens Point (UWSP); Roy Menzel, public relations professional; George Rogers, editor of the Stevens Point Journal; and Jerry Ernst, director of Portage County Parks Department. They met nearly every Friday at Al's Diner, along with Tom Schrader, Stevens Point parks director, new county parks director Gary Speckmann and many others through the years, Jury said.

They envisioned, planned and developed a trail connecting parks and green spaces in Stevens Point, Park Ridge, town of Hull, Whiting and Plover.

With tireless commitment, the volunteers raised money, negotiated with landowners for use of their property and coordinated placement of the trail. Twenty-five residential and commercial property owners agreed to allow a nature trail to cross their land at no cost.

The trail initially cost \$660,000 in 1996 to design and build. Funding came from many public and private sources, including area municipalities, state and federal grants and businesses and individuals.

The 22-mile Green Circle opened on June 1, 1996. More than 900 people turned out for the grand opening hike, and 80 walked the entire loop.

The trail is maintained by Portage County

Parks Department staff, with assistance from Stevens Point Parks and Schmeeckle Reserve staff. Annual donations from individuals and businesses support trail construction and maintenance. For more information, visit www.greencircletrail.org.

Hughes Hints



Matt Says...
“Don't lose your cool, have us check your A/C today!”



2013 FUSION SE
15k, sync, power
\$17,990



2011 FUSION SEL
leather, heated seats, sunroof
\$11,990



2009 ESCAPE XLT
sunroof, towing, power



2012 FUSION SE
Sunroof, power, one owner, 33k

SECOND STREET AUTO CLINIC

Time to TUNE-UP for Summer!

Green Circle Trail marks its 20th anniversary this June.

USA TODAY NETWORK-WISCONSIN

SPJ, 4 JUNE 2016, FP

'A community treasure'

Stevens Point's Green Circle Trail marks its 20th anniversary

NATHAN VINE

USA TODAY NETWORK-WISCONSIN

STEVENS POINT - From its modest beginnings in a local diner two decades ago, the Green Circle Trail has become a resource for residents to enjoy and a tool to draw people into the community.

The 26-mile trail marks its 20th anniversary in June, and this Saturday will be celebrated at one of the events that has come to showcase it, Walk Wisconsin. Now in its 12th year, the event is billed as the Midwest's premier walking event and offers four marathon events and two children's walks along the Green Circle Trail.

During Walk Wisconsin, there will be a "zero mile" mark in Pfiffner Park where people can learn more about the Green Circle Trail and its history. A photo booth will be available with recreational props along with displays, trail maps and giveaways. Those walking in the event will see Green Circle trivia along the route, and are asked to remember how many answers they guess correctly in order to collect a gift at the end of the walk.

Those who don't participate in Walk Wisconsin can also participate in the celebration through the trail's [Facebook page](#). Along with viewing posts chronicling the "26 reasons to love the Green Circle," people are being encouraged to post why they love



USA TODAY NETWORK-WISCONSIN

A long line of walkers doing the full marathon cross a small bridge in Pfiffner Park during Walk Wisconsin on the Green Circle Trail in Stevens Point.

the trail and share a photo or video of their favorite part.

People use the Green Circle Trail throughout the year, and businesses have used it as a recruitment tool for prospective job candidates, according to Green Circle Board President Nick Schultz. A report from this past

winter through this spring showed around 32,000 people used the trail during that time, and Schultz said the trail has more than 200,000 visits by people annually.

The idea for trail system linking

See TRAIL, Page 8A

OBITUARIES
2A

Louann Waltenberg

INDEX

BUSINESS7A
CLASSIFIED ...6B-8B
COMICS/TV5B

LOCAL3A
OPINION6A
RECORDS.....2A

SPORTS1B

\$1.50 RI
FOR HOME
SEE PAGE 2

be cancel
credited t
Austee
ayang@st
Twitter @



JEFF B
Chuck Habi
attendees
Wisconsin
Hotel & Co

Der
Dis

JEFF BOL
AND ADAM
USA TODAY N

ASHW
how she'
vacation
Noel,
server i
plans to
Outagam
son's car
sional Di

"We'r
of herse
met him
we need
trict). H
about th

Noel
crats att
tion Fric
son Hot
waubens

The c
region a
Congres
competi
rated a
at the R
Report.

Nels
way Rej

See RAC

Trail

Continued from Page 1A

local parks came from John Jury, a former Stevens Point Parks and Recreation Commission chairman, who saw a similar system on a trip out to Fort Collins, Colorado. Starting in March 1989 a group of active community volunteers — a group that included Dan Trainer, former dean of the College of Natural Resources at UW-Stevens Point; Roy Menzel, public relations professional; George Rogers, editor of the Stevens Point Journal; Stevens Point Parks and Recreation Director Tom Schrader; and Portage County Parks Department directors Jerry Ernst and Gary Speckmann — met Fridays at Al's Diner in Stevens Point to develop a trail to connect parks and green spaces in Stevens Point, Park Ridge, Hull, Whiting and Plover.

Organizers raised money, negotiated with landowners for their property and coordinated placement of the trail. Originally a total of 25 residential and commercial property owners agreed to allow the trail to their land at no cost, a number that has now dropped to around 12. The trail cost \$660,000 to design and build, with funding coming from various sources including Portage County, the city of Stevens Point, the villages of Plover and Whiting, state and federal grants, businesses and individuals. The trail eventually opened on June 1, 1996.

"It was kind of a miracle it happened," said Jury. "We were fortunate that we had people who brought a lot of specific skills that to the table that helped us pull everything together."

Today the trail is maintained by Portage County Parks staff, with assistance from Stevens Point Parks and staff from Schmeckle Reserve. A board of typically between 15 to 19 members oversees the business of the trail through four committees: finance, maintenance, land/lease and education.

A major focus of the board is raising funds to support trail construction and maintenance. Jury said resurfacing a mile of trail costs around \$14,000, and that around 3.6 miles of trail were resurfaced last year. Moving forward, Schultz said along with looking at possible ways to expand the trail along with developing an digital interactive map of the trail.

"The Green Circle Trail is a community trea-

sure," Schultz said. "We want to connect as many people with it as we can."

For more information on the Green Circle Trail, including how to volunteer or donate, please visit www.greencircletrail.org.

Nathan Vine: 715-345-2252 or nvine@gannett.com; on Twitter @NathanAVine

the south to Door and Kewaunee counties in the east.

National Democrats plan to pour a significant amount of time and resources into Nelson's campaign. He is one of 30 Democrats in the country receiving extra financial and campaign support from the Democratic Congressional Campaign Committee, the official

Donald Trump's presidential run, Republicans are equally optimistic about the strength of a state ticket topped by incumbent U.S. Sen. Ron Johnson.

Both parties consider northeastern Wisconsin and the 8th Congressional District a key battleground in the state.

The district has been held by an equal number

lost to Johnson six years ago.

An April poll by St. Norbert College and Wisconsin Public Radio found voters favored Feingold over Johnson by 10 percentage points.

Chuck Heidner, an 8th district delegate from the Green Bay area, said he's not sure how far Nelson's name recognition extends

And you know you're talking to a person. He knows how to work with people and can talk to people I couldn't stand to be in the same room with."

jbollier@gannett.com and follow him on Twitter @GBstreetwise; arodewal@pressgazettemedia.com and follow him on Twitter @AdamGRodewald

"The transplant team provided remarkable care, helping us get back to our happily ever after."

— Nyke
Transplant recipient

Less than two months after her wedding, Nyke unexpectedly learned she had kidney failure and would need a life-saving transplant. View her story at froedtert.com/Nyke.

Since 1967, our nationally recognized Transplant Center at Froedtert & the Medical College of Wisconsin Froedtert Hospital has given thousands of patients like Nyke a second chance at life. We provide:

- The only comprehensive transplant program in eastern Wisconsin
- Robust live kidney and live liver transplant programs
- The best three-year adult patient survival outcomes in the state for heart, liver,