

UNITED STATES LIGHT-HOUSE ESTABLISHMENT.

DAILY EXPENDITURE

AND

General Annual Account of Stores, Illuminating Apparatus,
Fixtures, and all other Public Property,

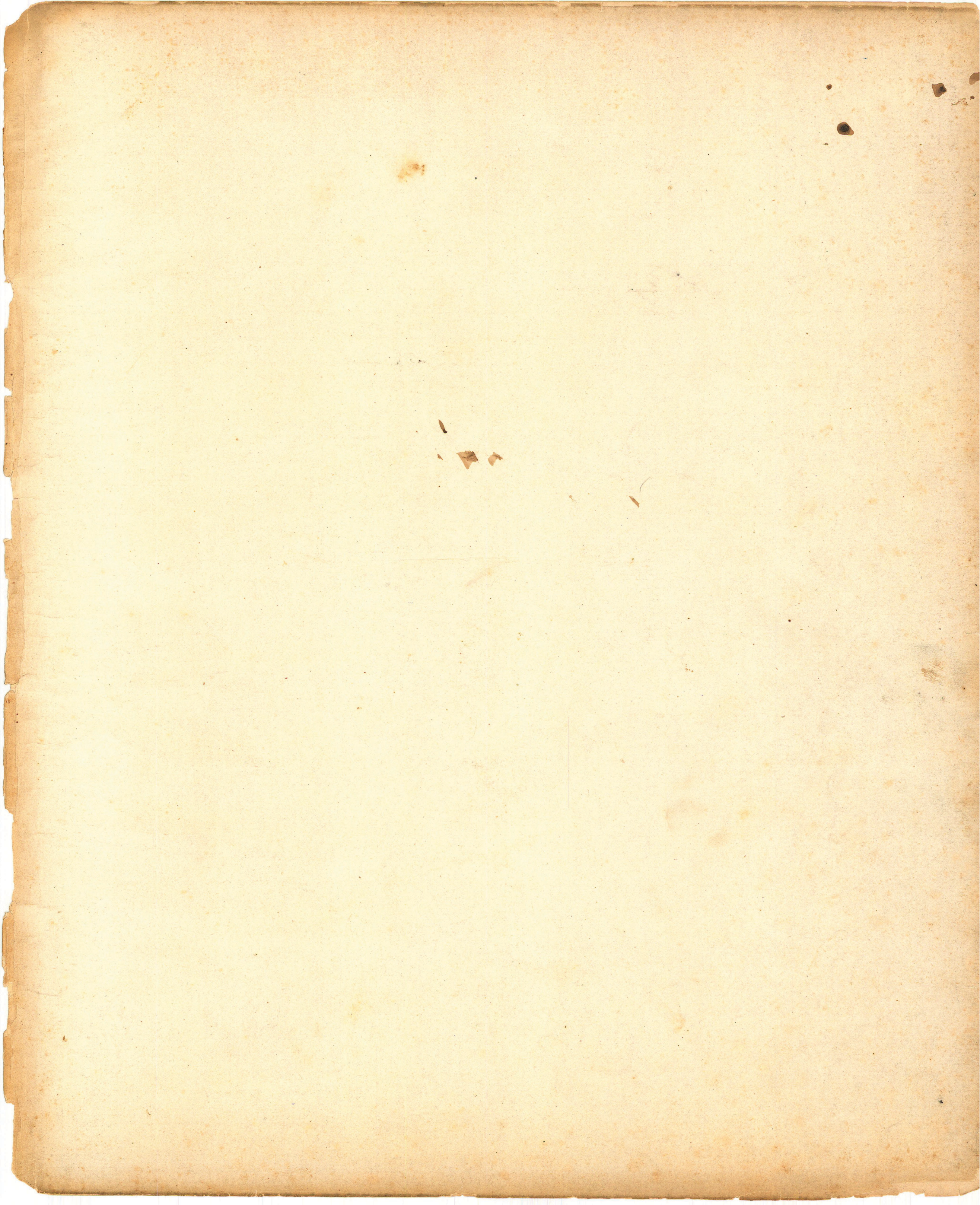
RECEIVED AND CONSUMED

At the *Milwaukee North Point*

Light Station *Commencing January 1 1876*

27
31
58





THE UNIVERSITY OF CHICAGO

THE UNIVERSITY OF CHICAGO
DEPARTMENT OF CHEMISTRY
CHICAGO, ILLINOIS

RECEIVED
MAY 15 1954

FROM
DR. J. H. GOLDSTEIN

TO
DR. R. W. WILSON

RE
CERAMIC MATERIALS

CHICAGO, ILLINOIS

THE UNIVERSITY OF CHICAGO

CHICAGO, ILLINOIS

UNITED STATES LIGHT-HOUSE ESTABLISHMENT.

RETURNS.

1. Keepers are required to make up their quarterly returns promptly at the close of each quarter-year, and transmit them by mail to the address of the light-house inspector of the district for examination, and, if found to be correct, entry on the books of the inspector's office, and transmission to the Light-house Board.

2. In addition to the quarterly return of daily expenditures of oil, wicks, and chimneys, and the abstract of the aggregate receipts and expenditures during the quarter, at the back of it (Form No 45), and the annual returns of shipwrecks near the light-station, and of the number of vessels which have passed within sight of the light during the year, a RETURN of all articles and quantities received and expended during the year (Forms Nos. 48a, 48b, 48c), from the 1st July to the 30th June, and a correct inventory of all public property at the light-station at the close of the fiscal year, will be made up from the expenditure books, according to the printed forms, and transmitted immediately thereafter by mail, or delivered by hand, to the light-house inspector of the district, to be examined, entered in the books of his office, and, when found to be correct, transmitted to the Light-house Board.

3. When a light-keeper resigns or is removed, a correct inventory of all public property under his charge will be made up in the presence of his successor, who will retain a copy, and sign two others, as receipts to the retiring keeper (Forms Nos. 46a and 46b), to be sent or delivered to the light-house inspector.

4. In case of the death of a keeper, the successor will receive from the wife or assistant, or other responsible person in charge of the light at the time, the supplies and other public property, and receipt for them as in the case of resignation or dismissal of a keeper.

5. No light-keeper, or representative of a light-keeper, will be entitled to receive any balance on account of salary until he shall have accounted satisfactorily for all the public property in his charge, or which should have been in his charge, at the time of the resignation, dismissal, or death of the keeper.

6. No keeper should sign receipts upon entering upon duty, or for supplies from the supply vessel, or from any other source, unless he is satisfied that the articles and quantities are correctly stated, as keepers will be held strictly and pecuniarily responsible for all articles and quantities they receipt for, and a subsequent discovery of error in their receipts will not relieve them from this responsibility. The names and quantities of all articles of public property must be entered at the proper places in this book as soon as they are received, and the quantities consumed must be entered at the times of issuing them for consumption.

7. All articles condemned as unfit for use are to be retained for exhibition to the inspector; and no alleged deficiency of utensils, brooms, brushes, or other fixtures, will be supplied unless the worn out or condemned articles are kept and exhibited when called for, and the keeper will be held accountable for their original value.

The attention of keepers is called to the *General Accounts* of stores received and consumed, given on the last pages of this book.

See end of Book for General Account of Stores, Illuminating Apparatus, Fixtures, and all other public property, received and consumed.

NOTE.—Light-keepers are strictly prohibited from making any purchases, or incurring any expenses, on account of the Light-house Establishment, by the Rules and Regulations. No bills or claims will be paid. Light-keepers will make their wants known in time, and, if reasonable, they will be supplied by the inspector or other authorized agent of the Light-house Board.

As soon as articles are received they should be entered in the book under the appropriate heading. Before a quarterly return is transmitted to the Inspector, its figures should be entered under the head of articles consumed, and a balance should be struck, which balance should, in all cases, correspond with the quarterly return and should be the basis of the next quarterly return.

The same remarks apply to the *Annual Returns*.

LIGHT-VESSELS.

The foregoing directions will be followed by keepers of LIGHT-VESSELS so far as they are applicable to them.

By order of the Light-house Board:

W. B. SHUBRICK,
Chairman.

THORNTON A. JENKINS, }
W. B. FRANKLIN, } *Secretaries.*

TREASURY DEPARTMENT,

Office Light-house Board, Sept. 6, 1858.

Approved:

HOWELL COBB,
Secretary of the Treasury.

CIRCULAR.

ORDERED:

1. That the attention of the inspectors be called to the negligent and irregular manner in which many of the light-keepers keep their expenditure books and make up their quarterly returns of expenditures of oil and other supplies.

2. That the inspectors be instructed to have the daily expenditure returns of the light-keepers carefully examined as they are received from the keepers, and, when found to be correct, entered in the office book, before transmission to the Light-house Board, and report all cases to this Board in which there is evidence of negligence in keeping the accounts of expenditures, or of any attempt to keep them by computation of time, or of quantities of oil expended.

3. That the most rigid accountability must be exacted of all persons employed on light-house service for all public property intrusted to their care, and any failure to account satisfactorily for oil or other public property is to be promptly reported.

By order of the Light-house Board:

W. B. SHUBRICK,
Chairman.

THORNTON A. JENKINS, }
W. B. FRANKLIN, } *Secretaries.*

TREASURY DEPARTMENT,

Office Light-house Board, Washington City.

THORNTON A. JENKINS,
Secretary Light-house Board.

ACCOUNT of Oil, Wicks, and Chimneys expended daily *Milwaukee North Point* Light *House*, in the month of *January*, 1876, and showing the time of lighting and extinguishing, and the length of time lighted each night.

January

DAY.	Time of lighting.		Time of extinguishing the light.		Length of time lighted.		Daily quantity of oil consumed in Light-house or Light-vessel lamps.				Number of chimneys broken each night.	Inches of new wick expended.	Quantity of oil taken from butts and set aside for hand and house lamps.	REMARKS ON THE WEATHER. (Dry, damp, rainy, snowy, light wind, moderate breeze, fresh breeze, or gale, &c.)		
	Hour.	Min.	Hour.	Min.	Hour.	Min.	Galls.	Qts.	Pints.	Gills.						
<i>1</i>	<i>2 38</i>		<i>7 29</i>		<i>12 57</i>		<i>1</i>				<i>2</i>	<i>Bone</i>	<i>3 in</i>	<i>1 qt</i>	<i>Lamp filled</i>	<i>N.E. with rain all night dark & foggy all day 7 P.M. a Gale until 3 am</i>
<i>2</i>	<i>2 39</i>		<i>7 29</i>		<i>12 57</i>		<i>1</i>				<i>1</i>					<i>West High from 2 am until sunrise Clear Pleasant day & night</i>
<i>3</i>	<i>2 40</i>		<i>7 29</i>		<i>12 49</i>		<i>1</i>				<i>1</i>		<i>3 in</i>			<i>West High Clear Pleasant Morning Afternoon S.W. & Cloudy</i>
<i>4</i>	<i>2 41</i>		<i>7 29</i>		<i>12 28</i>		<i>1</i>				<i>1</i>					<i>East quite High & Cloudy Morning Gloomy day 5 P.M. S.E. a Gale 3 Hours</i>
<i>5</i>	<i>2 42</i>		<i>7 29</i>		<i>12 47</i>		<i>1</i>				<i>1</i>					<i>S.W. & Cloudy 2 am rain mild Afternoon winds N.W. quite mild & still</i>
<i>6</i>	<i>2 44</i>		<i>7 29</i>		<i>12 45</i>		<i>1</i>				<i>1</i>		<i>3 in</i>			<i>S.W. Pleasant Morning but some Cloudy in Afternoon South Pleasant night</i>
<i>7</i>	<i>2 45</i>		<i>7 29</i>		<i>12 44</i>		<i>1</i>				<i>2</i>			<i>Lamp filled</i>		<i>S.E. Very Pleasant warm day & night</i>
<i>8</i>	<i>2 46</i>		<i>7 29</i>		<i>12 43</i>		<i>1</i>				<i>1</i>					<i>South & very Cloudy day & night</i>
<i>9</i>	<i>2 47</i>		<i>7 28</i>		<i>12 41</i>		<i>1</i>				<i>1</i>					<i>N.W. very dark & warm Morning 2 P.M. 11 am rain heard 2 P.M. Cold & Blowing Gale all night</i>
<i>10</i>	<i>2 49</i>		<i>7 28</i>		<i>12 39</i>		<i>1</i>				<i>1</i>		<i>1 qt</i>			<i>N.W. High very cold 6 below zero N.W. all day 4 P.M. still & cold</i>
<i>11</i>	<i>2 50</i>		<i>7 27</i>		<i>12 37</i>		<i>1</i>				<i>1</i>		<i>6 in</i>			<i>S.W. Cloudy & cold 7 am at 2 am & squalls Snow all day Lake</i>
<i>12</i>	<i>2 51</i>		<i>7 27</i>		<i>12 36</i>		<i>1</i>				<i>1</i>					<i>North cold Morning 2 below zero Clear cold day S.W. in Afternoon Pleasant night</i>
<i>13</i>	<i>2 52</i>		<i>7 27</i>		<i>12 35</i>		<i>1</i>				<i>1</i>					<i>N.W. in Morning 2 above 0 & quite Pleasant S.W. in Afternoon quite High in night</i>
<i>14</i>	<i>2 53</i>		<i>7 26</i>		<i>12 33</i>		<i>1</i>				<i>1</i>					<i>S.W. quite Cool in Morning Very Pleasant day & night Capt. Ryanston & family</i>
<i>15</i>	<i>2 52</i>		<i>7 26</i>		<i>12 32</i>		<i>1</i>				<i>2</i>			<i>Lamp filled</i>		<i>S.W. dark & Cloudy Morning & white frost 10 am quite High in Afternoon</i>
<i>16</i>	<i>2 55</i>		<i>7 25</i>		<i>12 30</i>		<i>1</i>				<i>1</i>		<i>3 in</i>			<i>South some Cloudy & another white frost 3 P.M. very foggy 10 P.M. S.W. with rain</i>
<i>17</i>	<i>2 56</i>		<i>7 25</i>		<i>12 29</i>		<i>1</i>				<i>1</i>					<i>S.W. Cloudy warm Morning would have been a Pleasant day if the sun were so early</i>
<i>18</i>	<i>2 57</i>		<i>7 24</i>		<i>12 27</i>		<i>1</i>				<i>1</i>					<i>N.E. East what little there was 9 am very foggy & rain 7 P.M. West & snow</i>
<i>19</i>	<i>2 58</i>		<i>7 24</i>		<i>12 26</i>		<i>1</i>				<i>1</i>					<i>West & Cloudy windows in Tower frost since 3 am Snow squalls & High</i>
<i>20</i>	<i>2 58</i>		<i>7 24</i>		<i>12 26</i>		<i>1</i>				<i>1</i>		<i>6 in</i>	<i>2 qt</i>		<i>West quite Cold Morning Pleasant day & cold night</i>
<i>21</i>	<i>2 59</i>		<i>7 24</i>		<i>12 25</i>		<i>1</i>				<i>1</i>					<i>N.E. Cloudy & cold Squalls of Snow in forenoon Snow & rain during night 60 High wind</i>
<i>22</i>	<i>5 00</i>		<i>7 23</i>		<i>12 23</i>		<i>1</i>				<i>1</i>					<i>S.E. foggy with rain all day fog left 11 P.M. quite a still night</i>
<i>23</i>	<i>5 01</i>		<i>7 23</i>		<i>12 22</i>		<i>1</i>				<i>1</i>		<i>3 in</i>			<i>West Cloudy & cold day & night</i>
<i>24</i>	<i>5 02</i>		<i>7 22</i>		<i>12 20</i>		<i>1</i>				<i>1</i>					<i>West Cold & Pleasant Morning 2 above zero still night</i>
<i>25</i>	<i>5 06</i>		<i>7 21</i>		<i>12 17</i>		<i>1</i>				<i>1</i>			<i>Lamp filled</i>		<i>N.W. Cloudy & Smoky & Snow Squalls in Morning Pleasant Afternoon</i>
<i>26</i>	<i>5 05</i>		<i>7 20</i>		<i>12 15</i>		<i>1</i>				<i>1</i>					<i>S.W. very Pleasant Early 9 am South 1 P.M. S.E. & High all night</i>
<i>27</i>	<i>5 07</i>		<i>7 19</i>		<i>12 12</i>		<i>1</i>				<i>1</i>					<i>West & quite High Clear Morning Pleasant day & fore part night</i>
<i>28</i>	<i>5 08</i>		<i>7 18</i>		<i>12 10</i>		<i>1</i>				<i>1</i>		<i>3 in</i>			<i>S.E. & rain all forenoon foggy until 2 P.M. 7 P.M. West out N</i>
<i>29</i>	<i>5 09</i>		<i>7 17</i>		<i>12 08</i>		<i>1</i>				<i>1</i>					<i>West N.W. & very High Cloudy & cold 5 below zero Cold high</i>
<i>30</i>	<i>5 11</i>		<i>7 16</i>		<i>12 05</i>		<i>1</i>				<i>1</i>					<i>S.W. in Morning & quite Cold but Clear till 1 am Wind High all day</i>
<i>31</i>	<i>5 12</i>		<i>7 15</i>		<i>12 03</i>		<i>1</i>				<i>1</i>					<i>S.W. & a Very Pleasant Morning S.E. in Afternoon & Pleasant</i>

44928 8 3 0 2 30 in 2 qt

	GALLONS.	QUARTS.	PINTS.
Total quantity consumed in the lamp of the Light- <i>House</i>	<i>8</i>	<i>3</i>	<i>0 = 2 qt</i>
Total quantity consumed this month for use in the dwelling-house or quarters, and other hand lamps, from oil butts.... <i>Sittler's</i>	<i>1</i>	<i>"</i>	<i>"</i>
Total quantity expended in this month..... <i>January</i>	<i>9</i>	<i>3</i>	<i>0 2 qt</i>

Order of Lens *2th* Kind of Light *S.P.L.*
 Number of Wicks in burner *One* Diameter of outer burner *1 3/4*

Written by me—

Daniel B. Greene

Daniel B. Greene, Light-Keeper.
Bone, Ass't Keeper.

ACCOUNT of Oil, Wicks, and Chimneys expended daily *Milwaukee North Point* Light *House*, in the month of *February*, 18*76*, and showing the time of lighting and extinguishing, and the length of time-lighted each night.

February 1876

DAY.	Time of lighting.		Time of extinguishing the light.		Length of time lighted.		Daily quantity of oil consumed in Light-house or Light-vessel lamps.				Number of chimneys broken each night.	Inches of new wick expended.	Quantity of oil taken from butts and set aside for hand and house lamps.	REMARKS ON THE WEATHER. (Dry, damp, rainy, snowy, light wind, moderate breeze, fresh breeze, or gale, &c.)	
	Hour.	Min.	Hour.	Min.	Hour.	Min.	Galls.	Qts.	Pints.	Gills.					
1	5	14	7	13	13	59	1	"	1	"	None	3 in	1 24 Lamp, filled	Wind North & Very High since 1. Am & Squalls Snow all day 5 Pm falling very cold & wind high	
2	5	15	7	12	13	54	1	"	1	"	"	"	"	Northwest in morning & Very Cold 15° below zero wind S.W. High afternoon South	
3	5	17	7	11	13	52	1	"	"	"	"	3 in	"	S.W. in morning Cold & Cloudy Pleasant afternoon & night but cold	
4	5	18	7	10	13	52	1	"	"	"	"	"	"	S.W. very cold morning 12° below zero still all day but very cold	
5	5	19	7	11	13	50	1	"	1	"	"	3 in	Lamp, filled	Southern morning still clear all day 6 Pm wind high a Gale all night	
Sunday	5	21	7	11	13	47	1	"	"	"	"	"	"	S.W. still cold & wind high afternoon clear & pleasant 5 Pm wind West	
7	5	22	7	11	13	45	1	"	"	"	"	"	"	West clear & pleasant South & S.E. in afternoon & pleasant night	
8	5	23	7	11	13	43	1	"	"	"	"	3 in	"	S.E. Cloudy Pa. Very white frost unpleasant & cloudy day damp rainy & foggy night	
9	5	25	7	11	13	39	1	"	1	"	"	"	Lamp, filled	S.E. foggy & rainy morning 2 Pm North fog all gone 6 Pm fog again	
10	5	26	7	11	13	37	1	"	"	"	"	"	"	S.E. a very foggy morning & day 1/2 P.M. a very heavy thunder storm passing	
11	5	27	7	11	13	35	1	"	"	"	"	"	"	S.W. a very pleasant day still warm for the season very pleasant night	
12	5	28	7	11	13	33	1	"	"	"	"	3 in	1. 21	S.W. in morning still a pleasant & warm day & night	
Sunday	5	30	6	59	13	29	1	"	1	"	"	"	Lamp, filled	East Pa. very pleasant morning & day 5 Pm North 9 Pm S.W. & High all night	
14	5	31	6	58	13	27	1	"	"	"	"	3 in	"	West High & Squalls of Snow 10 Am S.W. & cold night with Squalls Snow	
15	5	32	6	57	13	25	1	"	"	"	"	"	"	West High Cloudy & cold 10° above 0 afternoon S.W. clear & cold night	
16	5	33	6	56	13	23	1	"	"	"	"	3 in	"	West clear & cold 6° above 0 pleasant day S.W. in night still night	
17	5	34	6	54	13	20	1	"	"	"	"	"	"	West & a very pleasant day S.W. in night & very pleasant night	
18	5	35	6	53	13	18	1	"	1	"	"	"	Lamp, filled	S.W. in morning & still high afternoon cloudy & blowing a Gale West part night	
19	5	36	6	52	13	16	1	"	"	"	"	"	"	West quite clear & cold & pleasant 10 Am wind High all afternoon & night	
Sunday	5	37	6	51	13	14	1	"	"	"	"	"	"	East Pa. very pleasant morning wind high during day still night	
21	5	39	6	49	13	10	1	"	"	"	"	3 in	"	S.W. very damp morning 10 Am wind West & High 1 Pm S.W. cloudy wind high	
22	5	40	6	48	13	08	1	"	"	"	"	1. 21	"	S.W. cloudy & cold. Early 9 Am North & Snow Squalls S.W. in night & very high	
23	5	41	6	46	13	05	1	"	1	"	"	3 in	Lamp, filled	S.W. very clear & cold 8° below zero S.W. all day High all night	
24	5	42	6	45	13	03	1	"	"	"	"	"	"	South S.E. still High all day pleasant night	
25	5	44	6	43	12	59	1	"	"	"	"	3 in	"	South & a very white frost still smoky in morning pleasant day & night	
26	5	45	6	41	12	56	1	"	"	"	"	"	"	S.E. & a very white frost wind high afternoon cloudy 5 Pm rain & wind high	
Sunday	5	47	6	39	12	52	1	"	1	"	"	"	Lamp, filled	S.E. high wind cold 5 Pm a very heavy thunder storm & heavy rain	
28	5	48	6	38	12	50	1	"	"	"	"	"	"	S.W. cold & Snowy windows in towers & house all covered with ice in thick	
29	5	49	6	37	12	48	1	"	"	"	"	"	"	S.W. quite a cold morning 6° above zero clear & pleasant day but not thaw much	
30						388 54	7	32	Hours						

None 30 in

	GALLONS.	QUARTS.	PINTS.
Total quantity consumed in the lamp of the Light- <i>House</i>	7	2	" "
Total quantity consumed this month for use in the dwelling-house or quarters, and other hand lamps, from oil butts..... <i>Wittend</i>		3	" "
Total quantity expended in this month..... <i>February</i>	8	1	" "

Order of Lens *L No* Kind of Light *S. S. F.*
 Number of Wicks in burner *One* Diameter of outer burner *1 3/4*
 Written by me—
Daniel W. Green

Daniel W. Green, Light-Keeper.
None, Ass't Keeper.

March

and showing the time of lighting and extinguishing, and the length of time lighted each night.

DAY.	Time of lighting.		Time of extinguishing the light.		Length of time lighted.		Daily quantity of oil consumed in Light-house or Light-vessel lamps.				Number of chimneys broken each night.	Inches of new wick expended.	Quantity of oil taken from butts and set aside for hand and house lamps.	REMARKS ON THE WEATHER. (Dry, damp, rainy, snowy, light wind, moderate breeze, fresh breeze, or gale, &c.)
	Hour.	Min.	Hour.	Min.	Hour.	Min.	Galls.	Qts.	Pints.	Gills.				
1	5 50	6 35	12 25	1	"	1	"	"	"	"	None			Lamp & Wicks Wind N.E. High Snow Very High all day Snow drifting Badly very tedious night
2	5 51	6 33	12 42	1	"	"	"	"	"	"		3 in		North Early in Morning 10 Am N.W. Breeze a Pleasant day Late full of Ice
3	5 52	6 32	12 40	1	"	"	"	"	"	"		1.25		West in Morning Breeze Cold a Very Pleasant day S.W. in Afternoon Pleasant
4	5 52	6 30	12 36	1	"	"	"	"	"	"		3 in		South Clear Morning Very Pleasant day & night Slaying good
<i>Sunday</i> 5	5 55	6 28	12 33	1	"	"	"	"	"	"		3 in		South Cloudy & Foggy quite High 10 Am Rainy day & damp night
6	5 56	6 26	12 30	1	"	"	"	"	"	"				South Cloudy weather very changeable all day some times Very Pleasant & thin
7	5 57	6 25	12 28	1	"	"	"	"	"	"				West Calm & Cloudy 9 Am S.W. & Snow Squalls Afternoon S.W. Cold Still
8	5 58	6 23	12 25	1	"	"	"	"	"	"				N.E. Cloudy cold in Morning S.E. in Afternoon Cloudy & Southerly day
9	6 01	6 21	12 21	"	1	3	"	"	"	"				East Quite High & Cloudy Afternoon very Pleasant but Very Windy
10	6 01	6 19	12 18	1	"	"	"	"	"	"		3 in		S.E. very Pleasant Morning Afternoon very Foggy & Snow Part night
11	6 02	6 18	12 16	1	"	"	"	"	"	"				West Since 1 Am & Quite High Cloudy Morning wind High all day
<i>Sunday</i> 12	6 03	6 16	12 13	"	1	3	"	"	"	"		3 in	1.25	N.W. Cloudy & Cold Very Cloudy day in Night Squalls Snow
13	6 05	6 12	12 09	"	1	3	"	"	"	"				North a Cold Morning Quite a Pleasant Afternoon Night
14	6 06	6 12	12 06	1	"	"	"	"	"	"		3		S.E. Quite High & Cold all day & night
15	6 07	6 11	12 02	1	"	"	"	"	"	"				East & N.E. all day & Very High Snow all day 8 Pm rain all night
16	6 08	6 09	12 01	1	"	"	"	"	"	"				East with Snow North in Afternoon & Very High & Snow all night
17	6 09	6 07	11 58	1	"	"	"	"	"	"				North & High with Snow in Morning wind High & Snow Badly drift
18	6 10	6 06	11 56	"	"	1	3	"	"	"				North Higher & Very Cold thermometer at Sun Afternoon Clear still
<i>Sunday</i> 19	6 12	6 04	11 52	"	"	1	3	"	"	"		3 in		S.W. 6 Am 10 Am S.E. Clear & Cold & Late full of Ice as far as you can see
20	6 13	6 02	11 49	"	"	1	3	"	"	"				North & Snowing hard in Morning Afternoon N.E. Cold all day & night
21	6 12	6 00	11 46	"	1	"	"	"	"	"		3 in		N.W. Very Clear & Cold but Quite Pleasant in Afternoon & bright
22	6 15	5 58	11 43	"	"	3	"	"	"	"				N.W. Cold & Cloudy in Morning Afternoon & Night Quite Pleasant
23	6 16	5 57	11 41	"	"	1	3	"	"	"		3 in	1.25	N.W. Very Pleasant Morning & Slaying & Quite Pleasant day & night
24	6 17	5 55	11 38	"	"	1	3	"	"	"				East Quite High & Some Cloudy 3 Pm Blowing a Gale & Snowing all night
25	6 18	5 54	11 36	"	"	1	3	"	"	"				N.W. Very High & Blowing a Gale with Snow 10 Am S.E. Late in night
<i>Sunday</i> 26	6 19	5 52	11 33	"	1	0	0	"	"	"				N.W. Clear & Cold Very Pleasant Morning & Day Over Head but Quite Foggy
27	6 20	5 50	11 30	1	"	"	"	"	"	"		3 in		N.E. Quite a Pleasant Morning 10 Am Cloudy & Looking like a Storm Blowing a
28	6 21	5 49	11 28	"	1	3	"	"	"	"				N.E. Blowing a Gale all day & night North during the night
29	6 22	5 47	11 25	"	1	3	"	"	"	"				N.W. in Morning & Quite Cold 10 above a Quite a Cloudy day & night
30	6 23	5 45	11 22	"	1	3	"	"	"	"				N.W. Quite a Cold Morning Some Cloudy a Very Pleasant day
31	6 24	5 44	11 20	"	1	3	"	"	"	"				N.E. Cold & Cloudy Blowing for another Snow Storm Clear in night

372 44 7 3 30 3 26

	GALLONS.	QUARTS.	PINTS.
Total quantity consumed in the lamp of the Light- <i>House</i>	7	1	0.3
Total quantity consumed this month for use in the dwelling-house or quarters, and other hand lamps, from oil butts. <i>Kitchen</i>	1	3	0.3
Total quantity expended in this month. <i>March</i>	8	0	0.3

Order of Lens *Ltho* Kind of Light *N.Y.F*
 Number of Wicks in burner *One* Diameter of outer burner *1 3/4*
 Written by me—
Daniel W. Greene

Daniel W. Greene, Light-Keeper.
None, Ass't Keeper.

April

DAY.	Time of lighting.		Time of extinguishing the light.		Length of time lighted.		Daily quantity of oil consumed in Light-house or Light-vessel lamps.				Number of chimneys broken each night.	Inches of new wick expended.	Quantity of oil taken from butts and set aside for hand and house lamps.	REMARKS ON THE WEATHER. (Dry, damp, rainy, snowy, light wind, moderate breeze, fresh breeze, or gale, &c.)	
	Hour.	Min.	Hour.	Min.	Hour.	Min.	Galls.	Qts.	Pints.	Gills.					
1	6 26	5 22	11 16	"	"	"	1	"	"	"	None	6 in	Lamp. S. E. High Clear & Cold Pleasant day Over Head wind High in night		
Sunday 2	6 27	5 20	11 13	"	"	"	1	3	"	"	"	"	"	East High & Cloudy all day with drizzling rain Foggy in Afternoon & night	
3	6 28	5 38	11 10	"	"	"	1	3	"	"	"	1. 25	"	S. W. Cloudy & some rain a very dark & gloomy day in the night wind fresh	
4	6 29	5 36	11 07	"	"	"	1	3	"	"	"	"	"	West not so cold but cloudy Afternoon S. E. High & Clear	
5	6 30	5 35	11 05	"	"	"	1	3	"	"	"	3 in	"	West. Blowing a Gale since 2 Am & has blown a Gale all day & some Part	
6	6 31	5 33	11 02	"	"	"	1	3	"	"	"	"	"	S. W. & a Pleasant Morning & Clear day & P. M. winds High & Clear in night	
7	6 33	5 31	10 58	"	"	"	1	3	"	"	"	"	"	N. W. quite High & Clear in Morning Pleasant day South & S. E. in night	
8	6 34	5 29	10 55	"	"	"	1	3	"	"	"	3 in	"	S. E. in Morning Clear & Pleasant day West. wind North Clear & Cold	
Sunday 9	6 35	5 28	10 53	"	"	"	1	3	"	"	"	"	"	N. E. Pleasant Morning & a bit West S. E. in Afternoon wind Quite High in night	
10	6 36	5 26	10 50	"	"	"	1	"	"	"	"	"	Lamp. S. E.	S. E. Quite High & Cloudy in Morning 10 Am Wind heard 1 hour Clear of Sun S. E. & South	
11	6 37	5 25	10 48	"	"	"	1	3	"	"	"	"	"	S. E. Cloudy & High in Morning Very High & Chilly & Unpleasant day & night	
12	6 38	5 23	10 45	"	"	"	1	3	"	"	"	3 in	"	S. E. 2 Am & 2 P. M. Very Heavy Thunder Showers Cloudy warm Morning of the Season a	
13	6 39	5 22	10 43	"	"	"	1	3	"	"	"	"	"	N. W. Very High & Cloudy Morning & Am & S. E. during forenoon Afternoon North Rainy	
14	6 40	5 20	10 40	"	"	"	1	3	"	"	"	3 in	1. 25	West some Showers Cloudy Unpleasant day Still night	
15	6 41	5 18	10 37	"	"	"	1	3	"	"	"	"	"	West at Sun Rise very Clear & in 1/2 than 10 Min. a rain Bow. & rain 3 rain Bows to day	
Sunday 16	6 42	5 17	10 35	"	"	"	1	3	"	"	"	3 in	"	West Quite Clear & Pleasant but some clouds S. W. Cold & Cloudy in Afternoon	
17	6 44	5 15	10 32	"	"	"	1	3	"	"	"	"	"	N. W. Clear & Cold Unpleasant day Pleasant night	
18	6 45	5 13	10 28	"	"	"	1	3	"	"	"	"	"	West in Morning Afternoon East S. E. Very Pleasant day & night	
19	6 46	5 12	10 26	"	"	"	1	3	"	"	"	3 in	"	South in Morning S. E. & East in Afternoon Pleasant day night Heavy Showers High	
20	6 47	5 11	10 24	"	"	"	1	3	"	"	"	"	"	S. W. 4 am & rain 10 Am West High & Clear Afternoon N. W. Very High & Clear all	
21	6 48	5 09	10 21	"	"	"	1	3	"	"	"	"	"	N. W. Pleasant Morning Afternoon South & Cloudy Still night	
22	6 50	5 07	10 17	"	"	"	1	3	"	"	"	"	"	N. W. Pleasant Morning N. E. in Afternoon & Pleasant until 6 P. M. wind High & Cloudy	
Sunday 23	6 51	5 03	10 12	"	"	"	1	3	"	"	"	"	"	East & a Cloudy Morning N. E. in Afternoon 7 P. M. North & High all night	
24	6 52	5 02	10 12	"	"	"	1	3	"	"	"	3 in	1. 25	North High & Clear S. E. in Afternoon Quite a Clear Pleasant day & night	
25	6 53	5 02	10 09	"	"	"	1	3	"	"	"	"	"	West Pleasant Morning S. E. in Afternoon Pleasant day Chilly night	
26	6 54	5 01	10 07	"	"	"	1	3	"	"	"	0 in	"	S. E. N. Cloudy & wind High in Morning S. E. in Afternoon very High & Cloudy Still	
27	6 55	5 00	10 05	"	"	"	1	3	"	"	"	3 in	"	South. 10 Am S. E. 1 P. M. S. W. & very High Sun 10 Am Heavy Thunder 8 P. M. but no rain	
28	6 56	4 59	10 03	"	"	"	1	3	"	"	"	"	"	N. W. High & Clear all day Quite a Still night	
29	6 57	4 57	10 00	"	"	"	1	3	"	"	"	"	"	West & Cloudy some rain & some Snow S. W. High in Afternoon 9 P. M. N. W. blowing Gale	
Sunday 30	6 58	4 56	9 58	"	"	"	1	3	"	"	"	"	"	N. W. very High Cloudy & cold S. E. all afternoon & night & High	
31							317	50	6	2	10		30	3 25	

	GALLONS.	QUARTS.	PINTS.
Total quantity consumed in the lamp of the Light- <i>House</i>	6	2	1. Pt. 0 Gp
Total quantity consumed this month for use in the dwelling-house or quarters, and other hand lamps, from oil butts... <i>None</i>		3	" "
Total quantity expended in this month... <i>April</i>	6	1	1. 0 Gp

Order of Lens *L No* Kind of Light *J. R. S.*
 Number of Wicks in burner *One* Diameter of outer burner *1 3/4 in*
 Written by me—
Daniel R. Green

Daniel R. Green, Light-Keeper.
None, Ass't Keeper.

ACCOUNT of Oil, Wicks, and Chimneys expended daily *Milwaukee North Point* Light *House*, in the month of *May*, 18*76*, and showing the time of lighting and extinguishing, and the length of time lighted each night.

May

DAY.	Time of lighting.		Time of extinguishing the light.		Length of time lighted.		Daily quantity of oil consumed in Light-house or Light-vessel lamps.				Number of chimneys broken each night.	Inches of new wick expended.	Quantity of oil taken from butts and set aside for hand and house lamps.	REMARKS ON THE WEATHER. (Dry, damp, rainy, snowy, light wind, moderate breeze, fresh breeze, or gale, &c.)	
	Hour.	Min.	Hour.	Min.	Hour.	Min.	Galls.	Qts.	Pints.	Gills.					
1	6	59	2	55	9	56	"	"	1	3					<i>None</i> 3 in 1. 21 Lamp filled
2	7	00	2	52	9	52	"	"	1	3					<i>"</i> <i>"</i> North & Cloudy in Morning S. E. in Afternoon very <i>Stilly</i> Pleasant night
3	7	01	2	52	9	52	"	"	1	2					<i>"</i> <i>"</i> S. E. & Cloudy & Som. Rain in Morning in Afternoon wind High 7 Pm Som. Rain <i>pleasant</i>
4	7	02	2	57	9	49	"	"	1	2					<i>"</i> <i>"</i> North & Cloudy & Cold in Morning Afternoon East Cloudy & Stormy night
5	7	04	2	49	9	45	"	"	1	2					<i>"</i> <i>"</i> S. E. Cloudy & Rainy day & night
6	7	05	2	48	9	43	"	"	1	3					<i>"</i> <i>"</i> S. W. Cloudy Morning 9 Am S. E. Quite High & a rainy day 2 Pm a Heavy Thunder Shower <i>Windy High in night</i>
<i>Sunday</i> 7	7	06	2	47	9	41	"	"	1	2					<i>"</i> <i>"</i> S. W. Foggy & Som. Rain in forenoon 1 Pm S. W. very High when fog soon lifted <i>from part night</i>
8	7	07	2	46	9	39	"	"	1	2					<i>"</i> <i>"</i> West Cloudy & Som. Foggy & Rain Early in Morning North of S. W. in Afternoon Pleasant <i>pleasant</i>
9	7	08	2	45	9	37	"	"	1	2					<i>"</i> <i>"</i> South in Morning Early & Pleasant 10 Am S. W. of Cloudy 2 Pm S. W. Quite High <i>pleasant</i>
10	7	09	2	43	9	34	"	"	1	2					<i>"</i> <i>"</i> S. W. Very Pleasant Morning day & night Call on <i>McKinnon</i> Pleasant <i>pleasant</i>
11	7	10	2	42	9	32	"	"	1	2					<i>"</i> <i>"</i> S. W. Cloudy & Som. Rain Afternoon S. E. of Cold 6 Pm a Heavy Thunder Storm of a Gale <i>all night</i>
12	7	11	2	41	9	30	"	"	1	2					<i>"</i> <i>"</i> S. W. & Cloudy in Morning Early & all day & Pleasant S. E. of S. E. in Afternoon Pleasant <i>pleasant</i>
13	7	12	2	40	9	28	"	"	1	2					<i>"</i> <i>"</i> S. W. 5 Am 8 Am S. E. Quite Cool but a Pleasant day & night <i>pleasant</i>
<i>Sunday</i> 14	7	13	2	39	9	26	"	"	1	2					<i>"</i> <i>"</i> West a Very Pleasant Morning & West Coast 8 Am S. E. & Cloudy & Som. Rain 4 Pm <i>pleasant</i>
15	7	14	2	38	9	24	"	"	1	2					<i>"</i> <i>"</i> S. W. Cloudy 5 Am 8 Am S. W. & Very Hard Shudder of Lightning & rain all day & <i>wind blowing a gale night</i>
16	7	15	2	37	9	22	"	"	1	2					<i>"</i> <i>"</i> S. W. Blowing a Gale & a Thunder Storm 5 Am 8 Am Quite Clear Wind High S. E. <i>in afternoon Pleasant night</i>
17	7	16	2	36	9	20	"	"	1	2					<i>"</i> <i>"</i> S. W. Quite warm Morning Som. Foggy 2 Pm West & warm 7 Pm South warm night <i>pleasant</i>
18	7	17	2	35	9	18	"	"	1	2					<i>"</i> <i>"</i> S. W. 5 Am 8 Am North very foggy & S. E. all day foggy & Rainy night a Very <i>pleasant</i>
19	7	18	2	35	9	17	"	"	1	1					<i>"</i> <i>"</i> North of a Very foggy day 3 Pm a Rainy day Several Very Heavy Showers in day <i>pleasant</i>
20	7	19	2	34	9	15	"	"	1	2					<i>"</i> <i>"</i> S. W. Quite a Pleasant Morning & until 2 Pm when we had a Hard Shower <i>pleasant</i>
<i>Sunday</i> 21	7	20	2	33	9	13	"	"	1	2					<i>"</i> <i>"</i> West foggy & warm day S. W. in night warm damp night 2 foot bank put to day <i>pleasant</i>
22	7	21	2	32	9	11	"	"	1	2					<i>"</i> <i>"</i> S. W. Pleasant Morning Pleasant day & night <i>pleasant</i>
23	7	22	2	31	9	09	"	"	1	2					<i>"</i> <i>"</i> West Pleasant Morning South in Afternoon warm day & night <i>pleasant</i>
24	7	23	2	30	9	07	"	"	1	2					<i>"</i> <i>"</i> West Pleasant Morning warm day & night <i>pleasant</i>
25	7	23	2	30	9	07	"	"	1	2					<i>"</i> <i>"</i> West Pleasant Morning Afternoon S. E. Pleasant day 8 Pm S. E. Smoky night <i>pleasant</i>
26	7	24	2	29	9	05	"	"	1	2					<i>"</i> <i>"</i> West S. W. all day quite warm & Smoky on night <i>pleasant</i>
27	7	25	2	29	9	04	"	"	1	2					<i>"</i> <i>"</i> West all day warm & Pleasant in night wind S. W. & South <i>pleasant</i>
<i>Sunday</i> 28	7	26	2	28	9	02	"	"	1	2					<i>"</i> <i>"</i> West warm Som. Cloudy all day Looking like rain Non Cam warm Still dark <i>pleasant</i>
29	7	27	2	27	9	00	"	"	1	2					<i>"</i> <i>"</i> West warm & Pleasant Morning 10 Am Sun S. W. & blowing a Gale <i>pleasant</i>
30	7	28	2	27	8	59	"	"	1	2					<i>"</i> <i>"</i> S. E. all day Pleasant day & fore Part of night <i>pleasant</i>
31	7	29	2	26	8	57	"	"	1	2					<i>"</i> <i>"</i> S. W. & Very foggy & Rain 9 Am S. E. 3 Pm rain 7/8 Part 5 blowing a Gale 8 Pm <i>pleasant</i>
							29	13	5	3					2 1/2 in 2 2 1/2

	GALLONS.	QUARTS.	PINTS.
Total quantity consumed in the lamp of the Light- <i>House</i>	5	3	1
Total quantity consumed this month for use in the dwelling-house or quarters, and other hand lamps, from oil butts... <i>filled</i>		2	
Total quantity expended in this month.....	6	1	1

Order of Lens *L. No* Kind of Light *F. Y. 8*
 Number of Wicks in burner *One* Diameter of outer burner *1 3/4*

Daniel W. Green, Light-Keeper.

Written by me—

Daniel W. Green

None, Ass't Keeper.

and showing the time of lighting and extinguishing, and the length of time lighted each night.

DAY.	Time of lighting.		Time of extinguishing the light.		Length of time lighted.		Daily quantity of oil consumed in Light-house or Light-vessel lamps.				Number of chimneys broken each night.	Inches of new wick expended.	Quantity of oil taken from butts and set aside for hand and house lamps.	REMARKS ON THE WEATHER. (Dry, damp, rainy, snowy, light wind, moderate breeze, fresh breeze, or gale, &c.)		
	Hour.	Min.	Hour.	Min.	Hour.	Min.	Galls.	Qts.	Pints.	Gills.						
1	7	30	4	20	8	36	1	2			None	3 in	1 25	Lamp filled	S. E. & West High & Pleasant in Morning S. E. & Foggy in Afternoon 8 Pm rain damp night	
2	7	30	4	25	8	55	1	2			"			"	Wind West Pleasant Morning & day S. E. in Afternoon Pleasant night	
3	7	31	4	25	8	52	1	1			"	3 in		"	N. W. Cloudy & some rain in Morning Pleasant day & night	
Sunday	7	32	4	22	8	52	1	1			"			"	S. W. Cloudy & quite cool in Morning Afternoon West & S. W. Cloudy night	
5	7	32	4	22	8	52	1	1			"	3 in		"	N. W. Pleasant Morning S. E. in Afternoon Quite High Clear & cool night	
6	7	33	4	22	8	57	1	1			"			"	North Very Still 11 Am S. E. Quite High & Cool fore. Part night	
7	7	33	4	24	8	57	1	1			"			"	North 2 Am Very Heavy Thunder Storm Wind Blowing a Gale 8 Am North 1 Pm S. E.	
8	7	34	4	24	8	57	1	2			"			Lamp full	S. E. Good Breeze in Morning South in Afternoon Cloudy & quite High in night	
9	7	35	4	23	8	48	1	1			"			"	West in Morning & High during the day in night Quite warm Still	
10	7	36	4	23	8	47	1	1			"			"	West & High 5 Am 8 Am S. W. 10 Am South & Foggy 2 Hours 1 Pm S. E. & quite High	
Sunday	7	36	4	23	8	47	1	1			"			"	South 5 Am S. E. 10 Am Foggy 2 Pm a Very Heavy Thunder Storm Pleasant night	
12	7	36	4	23	8	47	1	1			"			"	S. W. & Very Foggy all day North & S. E. in Afternoon 7 Pm rain cloudy night	
13	7	37	4	23	8	46	1	1			"	6 in		"	S. E. 5 Am Quite High 7 Am Foggy all day 7 Pm fog gone Short time foggy night	
14	7	38	4	22	8	44	1	2			"			Lamp full	S. E. & Very Foggy until 5 Pm when left & commenced raining damp night	
15	7	38	4	23	8	45	1	1			"			"	North & Very Foggy all day 7 Pm. wind South of a Very Heavy Shower rained	
16	7	38	4	23	8	45	1	1			"	1 25		"	S. E. & Very Foggy with rain occasionally all day 11 Pm. a Very Heavy Shower	
17	7	38	4	23	8	45	1	1			"	3 in		"	S. E. Very Foggy Morning until 5 Pm with rain all day wind Quite High during night	
Sunday	7	39	4	23	8	44	1	2			"			Lamp full	S. W. & West in forenoon Damp & Cold with rain in Afternoon 7 Pm South S. E.	
19	7	39	4	23	8	44	1	1			"			"	S. W. & Cloudy in Morning South in Afternoon & Very Changeable Sun Shine & Cloud	
20	7	40	4	23	8	43	1	1			"			"	S. W. & Cloudy in Morning Afternoon South 7 Pm West. Cloudy with rain	
21	7	40	4	23	8	43	1	1			"			"	West Cloudy Morning S. W. South in Afternoon Pleasant & Warm night	
22	7	40	4	23	8	43	1	1			"			"	West fine Pleasant Morning Afternoon wind East S. E. & S. W. Pleasant warm night	
23	7	40	4	24	8	44	1	1			"			"	S. W. Some drizzling 5 Am 7 Am Some Cloudy warm past 7 Heavy Cloud S. W. in an instant wind changed	
24	7	40	4	24	8	44	1	1			"	3 in		"	West Very warm & some drizzle in Morning Afternoon S. W. warm day & night	
Sunday	7	40	4	25	8	45	1	1			"			"	West warm Morning South S. E. & S. E. in Afternoon warm day & night	
26	7	41	4	25	8	44	1	1			"			"	S. W. warm some foggy & rainy 8 Pm South of a Very Heavy Shower last night	
27	7	41	4	25	8	44	1	1			"	3 in		"	S. W. Cloudy & a warm Morning and all day & night	
28	7	40	4	26	8	46	1	1			"			"	S. W. Cool & Cloudy in Morning Pleasant Afternoon & night	
29	7	40	4	26	8	46	1	1			"			"	West Clear & Pleasant Morning	
30	7	40	4	27	8	47	1	1			"			"	"	
31							263	32	4	32	3					

House

	GALLONS.	QUARTS.	PINTS.
Total quantity consumed in the lamp of the Light-	4	3	0. 3 Gals
Total quantity consumed this month for use in the dwelling-house or quarters, and other hand lamps, from oil butts...		2	
Total quantity expended in this month.	5	1	11 3 Gals

Order of Lens *L 200* Kind of Light *7 7 7*
 Number of Wicks in burner *One* Diameter of outer burner *1 3/4 in*
 Written by me—
Daniel R. Green

Daniel R. Green, Light-Keeper.
Rome, Ass't Keeper.

ACCOUNT of Oil, Wicks, and Chimneys expended daily *Milwaukee North Point* Light House in the month of *July*, 1876, and showing the time of lighting and extinguishing, and the length of time lighted each night.

DAY.	Time of lighting.		Time of extinguishing the light.		Length of time lighted.		Daily quantity of oil consumed in Light-house or Light-vessel lamps.				Number of chimneys broken each night.	Inches of new wick expended.	Quantity of oil taken from butts and set aside for hand and house lamps.	REMARKS ON THE WEATHER. (Dry, damp, rainy, snowy, light wind, moderate breeze, fresh breeze, or gale, &c.)
	Hour.	Min.	Hour.	Min.	Hour.	Min.	Galls.	Qts.	Pints.	Gills.				
1	7 40	4 27	8 27	"	"	"	1	1			None	3 in		<i>Lamp full</i> N.W. Cloudy in Morning North in Afternoon & Foggy day & foggy night
Sunday 2	7 40	4 28	8 28	"	"	"	1	1			"	"		N.W. in Morning & Foggy 10 Am S.E. & Foggy Afternoon South & S.W. Pleasant
3	7 40	4 28	8 28	"	"	"	1	1			"	"		S.W. & quite warm all day Cloudy in Afternoon Som. Wind in night
4	7 39	4 29	8 50	"	"	"	1	1			"	3 in	1.25	N.W. & Cloudy 4 Am. 8 Am. Clear & Pleasant day S.E. Afternoon S.W. in
5	7 39	4 30	8 51	"	"	"	1	1			"	"		North S.E. & very foggy 3 Am a very heavy thunder storm 7 Am a gale
6	7 39	4 30	8 51	"	"	"	1	1			"	3 in		South Cloudy & smoky in morning Afternoon warm & a heavy storm North
7	7 38	4 31	8 53	"	"	"	1	1			"	"		South & very warm Pleasant Morning warmest day of the Season
8	7 38	4 31	8 53	"	"	"	1	1			"	"		South & very warm Morning S.E. in Afternoon & a very Pleasant night
Sunday 9	7 38	4 32	8 52	"	"	"	1	1			"	"		S.W. in 5 am 9 am S.E. & Pleasant 6 pm Sudden Change N.E. 7 pm a very
10	7 37	4 33	8 56	"	"	"	1	1			"	"		N.W. & North 1 am Cloudy with rain in Morning Pleasant Afternoon
11	7 37	4 34	8 57	"	"	"	1	1			"	"		North & Cloudy 7 am very foggy all forenoon Quite warm & Pleasant
12	7 37	4 35	8 59	"	"	"	1	1			"	"		North & very foggy forenoon S.E. in Afternoon Very warm & still night
13	7 36	4 35	8 59	"	"	"	1	1			"	3 in		West & very warm day 5 pm N.E. Cloudy but no rain 10 pm wind
14	7 35	4 36	9 01	"	"	"	1	2			"	"		N.W. & quite High clear 10 am N.E. & Cool Pleasant day & night
15	7 34	4 37	9 03	"	"	"	1	2			"	"		N.W. Pleasant Morning N.E. in Afternoon Pleasant Afternoon & night
Sunday 16	7 34	4 38	9 02	"	"	"	1	1			"	"		N.W. in Morning Very Pleasant N.E. in Afternoon warm day & night
17	7 33	4 39	9 06	"	"	"	1	1			"	3 in		N.W. & S.W. in forenoon Very warm Afternoon Som. Cloudy little rain
18	7 33	4 39	9 06	"	"	"	1	1			"	"		West S.W. in Morning S.E. in Afternoon warm day & night 15 Calls
19	7 32	4 40	9 08	"	"	"	1	2			"	3 in		S.W. & South in Morning & quite foggy since 1 am warm night
20	7 31	4 41	9 10	"	"	"	1	1			"	"	1.25	1 am a complete Hurricane lasting 1 hour 8 am N.W. N.E. & High in night
21	7 30	4 42	9 12	"	"	"	1	1			"	"		N.E. High Cloudy & Cool. High wind in night
22	7 29	4 43	9 12	"	"	"	1	1			"	3 in		S.W. in Morning Early 10 am N.W. & Cloudy N.E. in Afternoon; 7 pm North
Sun 23	7 28	4 44	9 16	"	"	"	1	1			"	"		North damp & cold for the Season Pleasant day & night
24	7 27	4 45	9 18	"	"	"	1	1			"	"		N.W. a very fine Morning & day S.W. in Afternoon West in night & Pleasant
25	7 26	4 46	9 20	"	"	"	1	1			"	"		N.W. Pleasant & Cool West & N.W. in Afternoon Pleasant night
26	7 25	4 47	9 22	"	"	"	1	1			"	3 in		N.W. Cloudy 5 am S.E. in Afternoon Very Pleasant warm day & night
27	7 24	4 48	9 24	"	"	"	1	2			"	"		S.W. Cloudy wind High 7 am little rain West & N.W. Afternoon Clear
28	7 23	4 49	9 26	"	"	"	1	1			"	"		North Pleasant Morning S.E. in Afternoon very warm Pleasant day & night
29	7 22	4 50	9 28	"	"	"	1	1			"	"		West & Cloudy & a very nice rain at 10 am lasting 1 hour S. & North East
Sunday 30	7 21	4 51	9 30	"	"	"	1	1			"	"		North & quite Cool Pleasant day S.E. in night very Pleasant night
31	7 20	4 52	9 32	"	"	"	1	1			"	"		N.W. very Pleasant day & night

282 06 4 3 1 3 None 24 in 2.25

	GALLONS.	QUARTS.	PINTS.
Total quantity consumed in the lamp of the Light <i>House</i>	4	3	1. 17 3/4
Total quantity consumed this month for use in the dwelling-house or quarters, and other hand lamps, from oil butts. <i>Kitchen</i>		2	
Total quantity expended in this month. <i>July</i>	4	1	1. 3 3/4

Order of Lens *L. No* Kind of Light *N. Y. N*
 Number of Wicks in burner *One* Diameter of outer burner *1 3/4*

Daniel W. Greco, Light-Keeper.
Nonee, Ass't Keeper.

Written by me—
Daniel W. Greco

ACCOUNT of Oil, Wicks, and Chimneys expended daily *Milwaukee North Point* Light *House*, in the month of *August*, 18*76* and showing the time of lighting and extinguishing, and the length of time lighted each night.

DAY.	Time of lighting.		Time of extinguishing the light.		Length of time lighted.		Daily quantity of oil consumed in Light-house or Light-vessel lamps.				Number of chimneys broken each night.	Inches of new wick expended.	Quantity of oil taken from butts and set aside for hand and house lamps.	REMARKS ON THE WEATHER. (Dry, damp, rainy, snowy, light wind, moderate breeze, fresh breeze, or gale, &c.)	
	Hour.	Min.	Hour.	Min.	Hour.	Min.	Galls.	Qts.	Pints.	Gills.					
1	7	19	4	53	9	34	1	2				None	1 1/2	Lamp filled	S.W. in Morning East & N.E. in Afternoon Very warm day & night
2	7	18	4	52	9	36	1	1				"	6 in	"	North in Morning N.E. in Afternoon warm day & night
3	7	17	4	55	9	38	1	1				"		"	S.E. in Morning & Warm Pleasant day & night
4	7	16	4	56	9	40	1	1				"		"	North & Cloudy in Morning S.E. Afternoon Very little rain in night
5	7	15	4	57	9	42	1	1				"		"	S.W. & Foggy Early 5 Am & 8 Am Dull Clear S.E. Afternoon Pleasant night
Sunday 6	7	13	4	58	9	45	1	1				"	3 in	"	S.W. in Morning North & N.W. in night
7	7	12	4	59	9	47	1	2				"		Lamp filled	S.W. in Morning Very Pleasant & warm day Pleasant night under a Good moon Callen 12 1/2
8	7	10	5	00	9	50	1	1				"		"	West Very Pleasant morning S.E. in Afternoon N.E. in night
9	7	09	5	01	9	52	1	1				"	6 in	"	N.E. Smoky Supply Boat arrives 11 Am left at 2 Pm for City
10	7	08	5	02	9	54	1	2 1/2				"		Lamp filled	S.E. & Pleasant S.E. in Afternoon 1/2 Past 5 a Heavy Shower wind Blowing Gale
11	7	07	5	03	9	56	1	1				"		"	S.W. & Foggy damp & Showery all day wind South in Afternoon foggy
12	7	05	5	04	9	59	1	1				"		"	West very damp & foggy morning & all day & night
Sunday 13	7	04	5	05	10	01	1	1				"		"	S.W. damp & foggy day & night S. Smoky & John Mars Call
14	7	02	5	07	10	05	1	2				"		Lamp filled	S.W. & foggy West & N.E. in Afternoon 9 Pm Blowing a Gale 2 Am
15	7	00	5	08	10	08	1	1 1/2				"	3 in	"	N.W. Dull High & cool day & still night
16	6	59	5	09	10	10	1	1 1/2				"		"	North in Morning Cloudy & East in Afternoon still night
17	6	57	5	10	10	13	1	2				"	3 in	Lamp filled	S.W. 5 Am & Very fine rain N.E. in Afternoon & during the night
18	6	56	5	11	10	15	1	2				"		"	South Cloudy & Smoky 12 Noon rain Wind West Pleasant night
19	6	52	5	12	10	18	1	2				"	3 in	"	S.W. Pleasant Morning S.E. in Afternoon 7 Pm Change S.E. Blowing a Gale
Sunday 20	6	53	5	13	10	20	1	2				"		"	N.E. Very High Clear & cool all day & fore. Past night 2 Calls
21	6	51	5	14	10	23	1	2				"		"	S.E. & High Clear & cool all day Cloudy damp night
22	6	50	5	15	10	25	1	2				"		"	South & Cloudy in Morning 1 Pm a fine Shower lasting 2 hours with S.E. Pleasant night
23	6	48	5	16	10	28	1	2				"		"	West Smoky in Morning S.E. in Afternoon S.W. in night & a very warm night
24	6	47	5	17	10	30	1	2				"		"	S.W. very warm & Smoky 8 Pm Very Sharp Lightning Heavy Thunder no rain wind West during night
25	6	45	5	18	10	33	1	2				"		"	West Dull High & cool Pleasant day & night wind West
26	6	42	5	19	10	35	1	2				"		"	West & cool North Short time in Afternoon wind West & Pleasant night
Sunday 27	6	43	5	21	10	39	1	2				"	3 in	"	West in Morning Afternoon South & S.E. High & Cloudy Pleasant night
28	6	40	5	22	10	42	1	2				"		"	West in Morning S.E. & Cloudy in Afternoon & night damp with South 15 Calls to see light to day
29	6	38	5	23	10	45	1	2				"		"	South Cloudy damp morning 9 Am Heavy Shower 5 Pm a Heavy Shower wind High all night
30	6	36	5	25	10	49	1	2				"		"	South Cloudy 5 Am 8 Am S.W. Dull High 6 Pm Pleasant & a Pleasant night
31	6	35	5	26	10	51	1	2				"		"	South Smoky 6 Am Pleasant day but very warm 11 Pm wind S.W. suddenly S.W. & North Blowing a Gale all night
							315 23	5	2	00	None	27	2 1/2		

	GALLONS.	QUARTS.	PINTS.
Total quantity consumed in the lamp of the Light-House.....	5	2	0 Pt 0 Qu
Total quantity consumed this month for use in the dwelling-house or quarters, and other hand lamps, from oil butts.....		2	
Total quantity expended in this month.....	5	0	0 Pt 0 Qu

Order of Lens *H.H.* Kind of Light *F.F.F.*
 Number of Wicks in burner *One* Diameter of outer burner *1 3/4*
 Written by me— *Danib. W. Green*
 Light-Keeper. *Danib. W. Green*
 Ass't Keeper. *None*

ACCOUNT of Oil, Wicks, and Chimneys expended daily

Milwaukee North Point Light House, in the month of September

1876

September

and showing the time of lighting and extinguishing, and the length of time lighted each night.

DAY.	Time of lighting.		Time of extinguishing the light.		Length of time lighted.		Daily quantity of oil consumed in Light-house or Light-vessel lamps.				Number of chimneys broken each night.	Inches of new wick expended.	Quantity of oil taken from butts and set aside for hand and house lamps.	REMARKS ON THE WEATHER. (Dry, damp, rainy, snowy, light wind, moderate breeze, fresh breeze, or gale, &c.)
	Hour.	Min.	Hour.	Min.	Hour.	Min.	Galls.	Qts.	Pints.	Gills.				
1	6 34	5 26	10 52				1	3			None	6 in	1.25	Lamp Filled Wind North High & Cloudy 9 Am N.W. Cool Pleasant day & night
2	6 32	5 27	10 53				1	2						" " N.W. Cool & Pleasant morning S.E. Afternoon S.W. in night
Sunday 3	6 30	5 28	10 58				1	2						" " S.W. & Cloudy in morning 5 Am 9 Am S.E. & clear all day S.W. in night
4	6 28	5 29	11 01				1	2						" " North & High in morning S.E. in Afternoon & High all night
5	6 27	5 30	11 03				1	2						" " S.E. Very High Sun rose clear 1/2 Past 5. A fine rain bow when Sun went into cloud & rain down East Cloudy & foggy till night
6	6 25	5 31	11 06				1	2				3 in		" " S.E. Blowing a Gale with rain since 1 Am till 6 Am cleared short time 4 Pm
7	6 23	5 32	11 09				1	2						" " S.E. Cloudy & foggy looking like rain all day & very little sun foggy damp night
8	6 22	5 33	11 11				1	2						" " N.W. Foggy & Cloudy until 7 Am fog left wind still high & very high all night
9	6 20	5 34	11 14				1	2						" " N.E. Very High & rain all day High all night with the rain
Sunday 10	6 18	5 35	11 17				1	2						" " N.E. all day & night with Drizzling rain very damp night
11	6 16	5 36	11 20				1	2						" " N.E. quite High with rain all day foggy afternoon North in night
12	6 15	5 37	11 22				1	2				3 in		" " North at Sunrise Sun rose clear & clear till 5 Pm clear of clouds until 5 Pm clear of clouds
13	6 13	5 38	11 25				1	2				3 in		" " S.E. 4 Am Sun rose clear & Am Cloudy & looking like rain 9 Am rain & rain
14	6 12	5 39	11 27				1	2						" " N.E. High & Cloudy 2 Pm not so High 4 Pm rain & clear up & Pleasant night
15	6 10	5 40	11 30				1	3					Lamp Filled	" " N.W. Clear & Pleasant N.E. in Afternoon & Pleasant damp night
16	6 08	5 41	11 33				1	3				3 in		" " West damp & smoky morning S.E. in Afternoon & Pleasant night
Sunday 17	6 06	5 42	11 36				1	2				1.25		" " West quite Pleasant morning S.E. in Afternoon N.E. in night quite Pleasant
18	6 05	5 43	11 38				1	2						" " N.W. Pleasant morning & day damp night & some foggy otherwise Pleasant night
19	6 03	5 45	11 42				1	3					Lamp Filled	" " S.W. & Pleasant 9 Am Cloudy S.E. in Afternoon quite High damp & cloudy
20	6 01	5 46	11 45				1	2						" " S.W. South & S.E. in forenoon dark & cloudy Afternoon & night
21	5 59	5 47	11 48				1	2				3 in		" " North & Cloudy with some rain in morning N.E. in Afternoon wind quite High in night
22	5 57	5 48	11 51				1	2						" " N.E. all day damp & cloudy looking like rain none came Pleasant night
23	5 55	5 49	11 54				1	3					Lamp Filled	" " N.E. Cloudy & foggy morning 11 Am wind S.E. & warm North & Cloudy in night
Sunday 24	5 52	5 50	11 56				1	3						" " North & Cloudy in morning East & S.E. in Afternoon clear at times then cloudy 6 Pm
25	5 52	5 51	11 59				1	3						" " South & Cloudy & damp morning 10 Am N.W. quite High in Afternoon clear & cold
26	5 50	5 52	12 02				1	3				3 in		" " West cold in morning 10 Am N.W. & High. Afternoon & night quite Pleasant
27	5 48	5 53	12 05				1	3				3 in		" " N.W. & Cold morning S.W. in Afternoon quite High & cloudy Pleasant night
28	5 47	5 54	12 07				1	3						" " S.W. High & Cloudy S.W. in Afternoon & cloudy Pleasant night
29	5 45	5 56	12 11				1	3						" " West & Cloudy very cold day clear & still night
30	5 43	5 57	12 14				1	3						" " West & S.W. all day a hard frost in morning & this fall Pleasant night
31						6	2	0	0	None	27	2	25	

	GALLONS.	QUARTS.	PINTS.
Total quantity consumed in the lamp of the Light-House.....	6	0	0 0
Total quantity consumed this month for use in the dwelling-house or quarters, and other hand lamps, from oil butts.....		2	0 0
Total quantity expended in this month.....	6	2	0 0

Order of Lens 4th Kind of Light W.R.P.
 Number of Wicks in burner One Diameter of outer burner 1 3/4 in
 Written by me— Daniel W. Green

Daniel W. Green, Light-Keeper.
None, Ass't Keeper.

ACCOUNT of Oil, Wicks, and Chimneys expended daily *Dulwich North Point* Light House, in the month of *October*, 18*76*, and showing the time of lighting and extinguishing, and the length of time lighted each night.

DAY.	Time of lighting.		Time of extinguishing the light.		Length of time lighted.		Daily quantity of oil consumed in Light-house or Light-vessel lamps.				Number of chimneys broken each night.	Inches of new wick expended.	Quantity of oil taken from butts and set aside for hand and house lamps.	REMARKS ON THE WEATHER. (Dry, damp, rainy, snowy, light wind, moderate breeze, fresh breeze, or gale, &c.)	
	Hour.	Min.	Hour.	Min.	Hour.	Min.	Galls.	Qts.	Pints.	Gills.					
<i>Sunday</i> 1	5	41	5	58	12	17	1	3							<i>West & N. W. Light, High & Cold all day & Night</i>
2	5	39	5	59	12	20	1	3							<i>S. W. Cold & Clear in Morning wind High in Afternoon & Fine Part night</i>
3	5	37	6	00	12	23	1	3							<i>West High & Cloudy all day dark Cloudy night</i>
4	5	35	6	12	12	27	1	3							<i>West dark & Cloudy Morning west part of all day & night a little snow by</i>
5	5	34	6	03	12	29	1	3							<i>West as Very Cold Morning Frost on windows. Thermometer in tower 30° F. have been</i>
6	5	32	6	04	12	32	1	3							<i>West Cloudy & Cold. Morning Frost. Seeds down & Put on Hoop Cold night.</i>
7	5	30	6	05	12	35	1								<i>West Cold. Clear Morning & a White Frost Afternoon S. W. Cloudy & some rain</i>
<i>Sunday</i> 8	5	29	6	06	12	37	1								<i>S. W. Cloudy Cold. Morning Clear & Cold in Afternoon & Night</i>
<i>S.</i> 9	5	27	6	07	12	40	1								<i>S. W. High & Clear & Am. S. W. Cloudy & High Blowing a Gale in Afternoon & Night</i>
10	5	26	6	08	12	42	1								<i>S. W. Clear & Cold in Morning Afternoon & Night Very Cold</i>
11	5	24	6	09	12	45	1								<i>S. W. & a White Frost Thermometer 28° Very Cold night</i>
12	5	22	6	11	12	49	1								<i>S. W. Smoky all day & night</i>
13	5	21	6	12	12	52	1								<i>S. W. Smoky Morning & all day Pleasant night</i>
14	5	19	6	13	12	54	1								<i>North since 1 Am Blowing a Gale & Very High all day & Fore Part night</i>
<i>Sunday</i> 15	5	17	6	14	12	57	1								<i>S. W. High & Clear Quite a Pleasant day & night but wind High</i>
16	5	16	6	15	12	59	1								<i>S. E. & Cold in Morning Quite a Pleasant day & Night Clear</i>
17	5	14	6	16	13	02	1								<i>S. E. all day & Smoky & warm Quite a Pleasant day & Night</i>
18	5	12	6	18	13	06	1								<i>S. E. in Morning & Cloudy & Unpleasant S. E. in Afternoon & rain in night</i>
19	5	11	6	19	13	08	1								<i>S. E. Foggy & High with rain in Morning Afternoon Quite Clear Short time this day in night</i>
20	5	09	6	20	13	11	1								<i>S. W. Since 3 Am Very High & some rain S. W. all day & Unpleasant Cloudy & rain in night</i>
21	5	08	6	21	13	13	1								<i>S. W. in Morning Very damp & some rain in forenoon Afternoon some fog & dark</i>
<i>Sunday</i> 22	5	07	6	22	13	15	1								<i>S. W. & Cloudy & damp Clear 10 Am Quite Clear Pleasant Afternoon & Night</i>
23	5	06	6	23	13	17	1								<i>S. W. Blue & Cold Morning 10 Am Snow Squall Quite a Pleasant night</i>
24	5	04	6	25	13	21	1								<i>S. W. & Cold Quite a Cold day and night</i>
25	5	02	6	26	13	24	1								<i>S. W. all day Cloudy & Cold night Quite a Fine Up. Stairs</i>
26	5	01	6	27	13	26	1								<i>West in Morning North & S. E. in Afternoon Pleasant day & night</i>
27	5	00	6	28	13	28	1								<i>S. E. Quite Cloudy wind Quite High all day & night</i>
28	4	59	6	29	13	30	1								<i>East & S. E. all day & night Quite High & Cloudy</i>
<i>Sunday</i> 29	4	58	6	30	13	32	1								<i>S. W. Cloudy with some rain Very foggy all day & night</i>
30	4	56	6	31	13	35	1								<i>S. E. & Very Foggy Until 10 Am Clear of Pleasant Afternoon Foggy</i>
31	4	54	6	33	13	39	1								<i>North & very Foggy all day & night no. Count</i>

263 25 7 2 1 0 Bone 30 in 3 2 1/2

	GALLONS.	QUARTS.	PINTS.
Total quantity consumed in the lamp of the Light- <i>House</i>	7	2	1
Total quantity consumed this month for use in the dwelling-house or quarters, and other hand lamps, from oil butts. <i>Fitter</i>		3	
Total quantity expended in this month. <i>October</i>	8	1	1

Order of Lens *4th* Kind of Light *7.7.8*
 Number of Wicks in burner *One* Diameter of outer burner *1 3/4 in*

Written by me—

David R Green

David R Green, Light-Keeper.
Bone, Ass't Keeper.

ACCOUNT of Oil, Wicks, and Chimneys expended daily *Milwaukee North Point* Light House, in the month of *November*, 1876, and showing the time of lighting and extinguishing, and the length of time lighted each night.

DAY.	Time of lighting.		Time of extinguishing the light.		Length of time lighted.		Daily quantity of oil consumed in Light-house or Light-vessel lamps.				Number of chimneys broken each night.	Inches of new wick expended.	Quantity of oil taken from butts and set aside for hand and house lamps.	REMARKS ON THE WEATHER. (Dry, damp, rainy, snowy, light wind, moderate breeze, fresh breeze, or gale, &c.)	
	Hour.	Min.	Hour.	Min.	Hour.	Min.	Galls.	Qts.	Pints.	Gills.					
1	4 53	6 32	13 41	"	"	"	"	"	"	"	"	"	"	"	Lamp till 11. N.W. very damp & foggy & drizzling rain all day until 7 P.M. dark night
2	4 52	6 35	13 48	"	"	"	"	"	"	"	"	"	"	"	" N.E. Very Cloudy with high wind since 1. Am blowing a Gale
3	4 50	6 37	13 47	"	"	"	"	"	"	"	"	"	"	"	West. Quite Pleasant white frost Snow & Rain. Afternoon still night
4	4 49	6 38	13 49	"	"	"	"	"	"	"	"	"	"	"	S.W. Cloudy & a very little rain. Quite a Pleasant night
5	4 48	6 40	13 52	"	"	"	"	"	"	"	"	"	"	"	West in morning South in forenoon S.E. in Afternoon Quite Cloudy South in night
6	4 47	6 41	13 54	"	"	"	"	"	"	"	"	"	"	"	South & High with rain since 1. Am 10. Am Very High & Cloudy 2 P.M. Snow
7	4 46	6 42	13 56	"	"	"	"	"	"	"	"	"	"	"	N.W. Cold & wind. High all day Cloudy dark night
8	4 45	6 43	13 58	"	"	"	"	"	"	"	"	"	"	"	N.W. dark & Cloudy in morning S.E. in Afternoon night Pleasant for
9	4 44	6 45	14 01	"	"	"	"	"	"	"	"	"	"	"	N.W. Pleasant forenoon Ice on windows in morning Quite a Pleasant day & n.
10	4 43	6 46	14 03	"	"	"	"	"	"	"	"	"	"	"	West in morning & Very Pleasant S.E. in Afternoon Pleasant day & night
11	4 42	6 47	14 05	"	"	"	"	"	"	"	"	"	"	"	South Pleasant morning S.E. in Afternoon quite fresh but Pleasant night
12	4 41	6 48	14 07	"	"	"	"	"	"	"	"	"	"	"	South in morning Som. Smoky & warm S.E. in Afternoon Smoky still night
13	4 40	6 50	14 10	"	"	"	"	"	"	"	"	"	"	"	West High & Cloudy looking like a storm wind high squalls snow in night
14	4 39	6 51	14 12	"	"	"	"	"	"	"	"	"	"	"	N.W. in morning & High 9 Am North & S.E. a Gale until 3 P.M. still High Cloudy
15	4 38	6 52	14 14	"	"	"	"	"	"	"	"	"	"	"	West & Quite Cloudy in morning S.E. in Afternoon Pleasant dark cold night
16	4 37	6 53	14 16	"	"	"	"	"	"	"	"	"	"	"	S.W. dark & Cloudy morning 10 Am S.E. Cloudy & cold night
17	4 36	6 55	14 19	"	"	"	"	"	"	"	"	"	"	"	West & foggy dark day & a foggy night
18	4 35	6 56	14 21	"	"	"	"	"	"	"	"	"	"	"	S.W. dark & foggy morning North with rain in Afternoon Cloudy night
19	4 33	6 57	14 22	"	"	"	"	"	"	"	"	"	"	"	N.W. in morning Cold & Cloudy S.E. in Afternoon Cloudy night
20	4 34	6 58	14 24	"	"	"	"	"	"	"	"	"	"	"	West dark & foggy morning S.E. Afternoon Quite warm & Cloudy for part
21	4 33	6 59	14 26	"	"	"	"	"	"	"	"	"	"	"	S.E. in morning 1. Am & Very High afternoon Very Cloudy blowing a Gale
22	4 33	7 00	14 27	"	"	"	"	"	"	"	"	"	"	"	N.W. Very High & cold with squalls snow all day & night
23	4 32	7 02	14 30	"	"	"	"	"	"	"	"	"	"	"	S.E. with squalls of S. a very cold day & night
24	4 31	7 03	14 32	"	"	"	"	"	"	"	"	"	"	"	S.W. with squalls of snow all day snow squalls in night
25	4 31	7 04	14 33	"	"	"	"	"	"	"	"	"	"	"	N.W. Cloudy day & snow squalls all night
26	4 31	7 05	14 34	"	"	"	"	"	"	"	"	"	"	"	West & Quite High in morning and all day but Quite Pleasant
27	4 30	7 06	14 36	"	"	"	"	"	"	"	"	"	"	"	West high and cold & Pleasant day & night
28	4 30	7 07	14 38	"	"	"	"	"	"	"	"	"	"	"	West high cold & Pleasant day & night
29	4 30	7 08	14 38	"	"	"	"	"	"	"	"	"	"	"	North & N.W. all day & high in night N.W. blowing a Gale
30	4 29	7 09	14 40	"	"	"	"	"	"	"	"	"	"	"	Thunder given day wind with & every thing all covered with snow
31															

	GALLONS.	QUARTS.	PINTS.
Total quantity consumed in the lamp of the Light- <i>House in month November</i>	8	1	1 = 2
Total quantity consumed this month for use in the dwelling-house or quarters, and other hand lamps, from oil butts.....	"	3	" "
Total quantity expended in this month..... <i>November</i>	9	0	1. 2

Order of Lens *L^{tho}* Kind of Light *N.W.*
 Number of Wicks in burner *One* Diameter of outer burner *1 3/4 in.*
 Written by me—
Daniel R. Green

Daniel R. Green, Light-Keeper.
Tone, Ass't Keeper.

and showing the time of lighting and extinguishing, and the length of time lighted each night.

DAY.	Time of lighting.		Time of extinguishing the light.		Length of time lighted.		Daily quantity of oil consumed in Light-house or Light-vessel lamps.				Number of chimneys broken each night.	Inches of new wick expended.	Quantity of oil taken from butts and set aside for hand and house lamps.	REMARKS ON THE WEATHER. (Dry, damp, rainy, snowy, light wind, moderate breeze, fresh breeze, or gale, &c.)
	Hour.	Min.	Hour.	Min.	Hour.	Min.	Galls.	Qts.	Pints.	Gills.				
1	4	28	7	10	14	42	1	1	2		None	6 in	Lamp filled	N.W. Very High & Very Cold. Afternoon Pleasant but. Cold night
2	4	28	7	11	14	43	1	1	2		"	"	"	N.W. Clear Cold all day to above zero in night. Cloudy & Snow Squalls
Sunday 3	4	28	7	12	12	44	1	1	1		"	"	1 qt	N.W. Quite a Pleasant Morning Cloudy in afternoon & a Cold night
4	4	28	7	13	14	45	1	1	2		"	"	"	N.W. & a. Very Pleasant day & night
5	4	28	7	14	14	46	1	1	1		"	"	"	S.W. in Morning quite Pleasant High all night. Capt. Ryan in. Lady dined with us
6	4	28	7	15	14	47	1	1	1		"	3 in	"	West & High but Clear South in night & Very High
7	4	28	7	16	14	48	1	1	1		"	"	"	N.W. Quite High & Clear & Very Cold all day & night
8	4	28	7	17	14	49	1	1	2		"	"	Lamp filled	West & N.W. Very High & Very Cold 20 below zero Very Cold all day & night
9	4	28	7	18	14	50	1	1	1		"	3 in	"	N.W. & Very High & Very Cold 22 below zero Very Clear & Cold night
Sunday 10	4	28	7	19	14	51	1	1	1		"	"	1 qt	S.W. & South since 2 am & quite High with snow. Squalls all day & night
11	4	28	7	20	14	52	1	1	1		"	"	"	South & S.W. all day & night Very High in forenoon night not so High
12	4	29	7	20	14	51	1	1	2		"	"	Lamp filled	South & S.E. all day & quite Pleasant 5 P.M. S.W. & Very High all night
13	4	29	7	21	14	52	1	1	1		"	"	"	West a. Very Pleasant day 6 P.M. S.W. & High all night
14	4	29	7	22	14	53	1	1	1		"	3 in	"	N.W. very High & Very Cold all day & wind Very High all night
15	4	29	7	23	14	54	1	1	2		"	"	Lamp filled	S.W. with Squalls Snow Cold day West in night Blowing Gale all night
16	4	29	7	23	14	54	1	1	1		"	"	"	West High & Very Cold 20 below zero Very High all night with Snow
Sunday 17	4	29	7	24	14	55	1	1	2		"	3 in	Lamp filled	West & N.W. with Snow all day East & S.E. all night & Very High
18	4	30	7	24	14	54	1	1	2		"	3 in	Lamp filled	S.W. Very Cold Morning 8 below zero 6 P.M. Very High in night & Squalls
19	4	30	7	25	14	55	1	1	1		"	"	1 qt	S.E. in Morning Quite Cold with Squalls Snow Wind Blowing Gale
20	4	31	7	25	14	54	1	1	2		"	"	Lamp filled	S.W. not so Cold wind High all day Quite a Comfortable night
21	4	31	7	26	14	55	1	1	1		"	"	"	S.W. Cloudy & High since 1 am Pleasant Afternoon & night
22	4	31	7	26	14	55	1	1	2		"	3 in	Lamp filled	S.W. Pleasant Morning Afternoon wind Quite High 6 P.M. West & High all night
23	4	32	7	27	14	54	1	1	1		"	"	"	West & a. Pleasant Morning 10 am N.W. 2 P.M. N.E. wind High Blowing Gale
Sunday 24	4	33	7	27	14	54	1	1	2		"	"	Lamp filled	N.E. in Morning Cold & cloudy 10 am East High Afternoon a Gale all night
25	4	34	7	27	14	53	1	1	1		"	"	"	East. Quite High & Cold N.E. in Afternoon Some Warm. Quite night
26	4	34	7	28	14	52	1	1	2		"	6 in	Lamp filled	S.W. with Snow Squalls all day quite a Cold night
27	4	35	7	28	14	53	1	1	1		"	"	"	West & N.W. all day Very Pleasant day Ice in the lake as far as you can see
28	4	36	7	28	14	52	1	1	2		"	"	Lamp filled	N.W. & North in forenoon Afternoon Snowing hard Cold night
29	4	37	7	28	14	51	1	1	1		"	"	1 qt	North & E. with Squalls Snow all day wind High in night
30	4	37	7	29	14	52	1	1	2		"	"	Lamp filled	N.W. & North all day quite a Pleasant day very Cold night
Sunday 31	4	38	7	29	14	51	1	1	1		"	"	"	S.W. very Cold Morning Thermometer at zero
							460	24	10		None	3 in & 4 in		

	GALLONS.	QUARTS.	PINTS.
Total quantity consumed in the lamp of the Light House	9	0	1 1/2
Total quantity consumed this month for use in the dwelling-house or quarters, and other hand lamps, from oil butts.	1		
Total quantity expended in this month. December	10	0	1 1/2

Order of Lens *L No* Kind of Light *F. F. F.*
 Number of Wicks in burner *One* Diameter of outer burner *1 3/4 in*

Daniel W. Green, Light-Keeper.
None, Ass't Keeper.

Written by me—
Daniel W. Green

and showing the time of lighting and extinguishing, and the length of time lighted each night.

January 1877

DAY.	Time of lighting.		Time of extinguishing the light.		Length of time lighted.		Daily quantity of oil consumed in Light-house or Light-vessel lamps.				Number of chimneys broken each night.	Inches of new wick expended.	Quantity of oil taken from butts and set aside for hand and house lamps.	REMARKS ON THE WEATHER. (Dry, damp, rainy, snowy, light wind, moderate breeze, fresh breeze, or gale, &c.)
	Hour.	Min.	Hour.	Min.	Hour.	Min.	Galls.	Qts.	Pints.	Gills.				
1	4 38		7 29		14 57		1		2		None	3 in		Lamp filled Wind N.W. Very Cold day & night Ice in Lake as far as you can see
2	4 39		7 29		14 50		1		1					" N.W. Very Cold 9 Am & above 0 4 Pm 10 Above Full night
3	4 40		7 29		14 49		1		1					" N.W. Cold Morning 7 Am & below 0 9 Am at 0 Clear Cold day & night
4	4 41		7 29		14 48		1		1			6 in		" West Cold 2 below in Am Pm wind South blowing hard Full night
5	4 42		7 29		14 47		1		1					" West Cloudy dark Morning South in Pm & more moderate Still dark night
6	4 44		7 29		14 45		1		1					" West & very foggy Morning Clear Cold in Pm wind West Cold in night
Sunday 7	4 45		7 28		14 43		1		2				1 25 Lamp filled	" West in Am N.W. in Pm Growing cold Fast wind High all day & from part night
* 8	4 46		7 28		14 42		1		1			3 in		" West & a Very Cold Am 12 Below 0 Clear Pleasant Pm 2 Pm 8 Below 0
9	4 47		7 27		14 40		1		1					" South Blowing a Gale Snowing hard in Am S.E. in Pm & High all day & night
10	4 49		7 27		14 38		1		1					" West Cloudy Snowing hard Am 10 Am Clear Pleasant Pm High in night
11	4 50		7 27		14 37		1		1					" N.E. Very High Snow Blowing a Gale all day & night
12	4 51		7 27		14 36		1		1					" N.E. Quite High Am not so High Pm but Cold & High in night
13	4 52		7 26		14 34		1		1			3 in		" S.W. Clear & Cold 10 below 0 Am wind Quite High Pm 10 above 0 High wind
Sunday 14	4 53		7 26		14 33		1		1			3 in		" West Quite Pleasant Am N.E. in Pm Quite Pleasant day Cloudy night
15	4 54		7 25		14 31		1		2				Lamp filled	" North Very High & Cold with Snow East Pm Blowing a Gale from part night
16	4 55		7 25		14 30		1		1					" N.W. Cold Morning 2 below 0 11 Am Snow Very Pleasant Pm Night
* 17	4 56		7 24		14 28		1		1			3 in	1 25	" S.W. in Am & Cold Quite a Pleasant day N.W. in Pm Still night
18	4 56		7 26		14 30		1		1					" East Am dark & Cloudy day Pleasant Pm & night
19	4 57		7 25		14 28		1		1					" South dark & Cloudy Am South Pm quite Pleasant in night wind High
20	4 59		7 24		14 25		1		1					" West S.W. all day & Very Cold 2 below 0 Quite Clear & wind High
Sunday 21	5 00		7 24		14 24		1		1					" West Cold Morning S.W. Pm Clear & Pleasant Lake full Ice wind High
22	5 01		7 23		14 22		1		1				Lamp filled	" West Clear & Cold day & night Lake full of Ice as far as you can see
23	5 03		7 22		14 19		1		1			6 in		" S.W. very Clear & Cold Am 12 below 0 10 Am South 2 Pm S.W. Blowing Gale all night
24	5 05		7 20		14 16		1		1					" N.W. Clear & Cold 8 below 0 Am West Pm Very Cold wind High in night
25	5 06		7 20		14 14		1		1					" S.W. Clear & Cold 10 below 0 Very Pleasant Cold day & night
26	5 07		7 19		14 12		1		1			3 in	1 25	" S.W. Pleasant Morning & not so Cold Very Pleasant Pm & night
27	5 08		7 18		14 10		1		1				Lamp filled	" West Very Pleasant Am S.E. Pm Pleasant Pm & night
Sunday 28	5 09		7 17		14 08		1		1					" S.W. Very Pleasant Am & Very White Frost 1 Pm wind High Pleasant night
29	5 10		7 16		14 06		1		1					" S.W. Pleasant Am Some Snowing West Pm & Pleasant South & foggy night
30	5 12		7 15		14 03		1		1					" South & foggy Am 2 P.M. S.E. but not so foggy Little rain in night
31	5 13		7 14		14 01		1		1				Lamp filled	" South Cloudy & Some foggy Am 2 Pm West & Pleasant night

449 00 8 3 1 3

30 in 3 25

	GALLONS.	QUARTS.	PINTS.
Total quantity consumed in the lamp of the Light-house.....	8	2	1 - 3
Total quantity consumed this month for use in the dwelling-house or quarters, and other hand lamps, from oil butts.....	9	2	0. 3 Gills
Total quantity expended in this month.....	10	1	0 3

Order of Lens *H tho* Kind of Light *F F F*
 Number of Wicks in burner *One* Diameter of outer burner *1 3/4 in*
 Written by me— *Daniel K Green*
From 1st January to 17 inclusive is taken from 1876 Callender as I had it entered on my daily Expense Book for time of Lighting & Extinguishing my Lamp Previous to my receiving my Callender for 1877
Daniel K Green, Light-Keeper.
None, Ass't Keeper.

ACCOUNT of Oil, Wicks, and Chimneys expended daily *Milwaukee North Point* Light House, in the month of *February*, 1877, and showing the time of lighting and extinguishing, and the length of time lighted each night.

DAY.	Time of lighting.		Time of extinguishing the light.		Length of time lighted.		Daily quantity of oil consumed in Light-house or Light-vessel lamps.				Number of chimneys broken each night.	Inches of new wick expended.	Quantity of oil taken from butts and set aside for hand and house lamps.	REMARKS ON THE WEATHER. (Dry, damp, rainy, snowy, light wind, moderate breeze, fresh breeze, or gale, &c.)
	Hour.	Min.	Hour.	Min.	Hour.	Min.	Galls.	Qts.	Pints.	Gills.				
1	5	15	7	13	13	58	1	1			None			Lamp filled <i>Made</i> N.W. w. Very Pleasant Morning & day as Damp Night
2	5	16	7	12	13	56	1					6 in		West of a very heavy white frost in Am Pleasant until 10 Am then cloudy night
3	5	18	7	11	13	53	1							S.E. cloudy day Am 10 Am West N.E. in night & Still cloudy
<i>Sunday</i> 4	5	19	7	10	13	51	1					3 in	1 2 1/2	Lamp filled South cloudy morning & day 5 Pm N.W. cloudy night
5	5	21	7	08	13	47	1							West N.W. all day very cloudy little rain Am cloudy night
6	5	22	7	07	13	45	1							S.W. 3 Am Dull High in forenoon & all day Pleasant night
7	5	24	7	05	13	41	1							West Clear & very Pleasant N.E. in afternoon Very Pleasant night
8	5	25	7	04	13	39	1							Lamp filled N.W. & an uncommon white frost & some cloudy 11 Am Pleasant 5 Pm N.E. High
9	5	26	7	03	13	37	1						3 in	South of a white frost Sun rose Very Pleasant soon cloudy Pleasant night
10	5	27	7	02	13	35	1							South cloudy & foggy in Am wind S.W. in Pm & night quite Pleasant
<i>Sunday</i> 11	5	29	7	00	13	31	1							South foggy Pleasant Am cloudy Pm wind West High all night
12	5	30	6	59	13	29	1						6 in	North High cold all day wind N.E. Pm & night High all night
13	5	31	6	58	13	27	1							Lamp filled East Clear cold in Am Pleasant day wind S.E. Pm & night
14	5	32	6	57	13	25	1							S.E. Am & some cloudy S.E. all day & Dull High cloudy still night
15	5	33	6	56	13	23	1							S.W. some cloudy & smoky South Pm still dark night
16	5	34	6	55	13	21	1						1 2 1/2	N.W. High clear since 3 Am Very High clear all day Pleasant night
17	5	36	6	53	13	17	1						3 in	N.W. very Pleasant Am N.E. in Pm & Very Pleasant day & night
<i>Sunday</i> 18	5	37	6	51	13	14	1							South very clear & Pleasant Am S.W. N.W. & North in night Blowing
19	5	38	6	50	13	12	1							North High Am N.E. & High clear Pm Dull a Pleasant night
20	5	40	6	48	13	08	1							Lamp filled West Dull High Am S.W. Pm Dull High clear all night
21	5	41	6	47	13	06	1						3 in	S.W. High clear all day would have been Very Pleasant were it not so high
22	5	42	6	45	13	03	1						3 in	South & smoky all day 5 Pm East & N.E. all night Blowing a Gale
23	5	43	6	44	13	01	1							N.E. & Very High & Cloudy all day North & High all night
24	5	44	6	43	12	59	1							North & High Am N.E. Pm & night Cold cloudy night
<i>Sunday</i> 25	5	46	6	42	12	56	1							North cloudy Am N.E. Pm Dull Pleasant in night N.E. High & Cloudy
26	5	47	6	40	12	53	1						1 2 1/2	N.E. High & Cloudy all day & night
27	5	48	6	38	12	50	1							N.E. & Dull High Am Pm not so high Pleasant night Mrs Taylor called
28	5	49	6	36	12	47	1							N.W. very Pleasant & white frost Am S.E. Pm & in night Pleasant
29					37	44	7	0	1	1				
30							3							House
31							7	3	1	1				None 2 7/8 in 3 2 1/2

	GALLONS.	QUARTS.	PINTS.
Total quantity consumed in the lamp of the Light- <i>House</i>	7	0	1 Pt 1 G
Total quantity consumed this month for use in the dwelling-house or quarters, and other hand lamps, from oil butts..... <i>Attitude</i>		3	
Total quantity expended in this month..... <i>February</i>	7	3	1 Pt 1 G

Order of Lens *4 The* Kind of Light *N.W. P*
 Number of Wicks in burner *One* Diameter of outer burner *1 3/4*
 Written by me—
Daniel K Greene

Daniel K Greene, Light-Keeper.
None, Ass't Keeper.

March

and showing the time of lighting and extinguishing, and the length of time lighted each night.

DAY.	Time of lighting.		Time of extinguishing the light.		Length of time lighted.		Daily quantity of oil consumed in Light-house or Light-vessel lamps.				Number of chimneys broken each night.	Inches of new wick expended.	Quantity of oil taken from butts and set aside for hand and house lamps.	REMARKS ON THE WEATHER. (Dry, damp, rainy, snowy, light wind, moderate breeze, fresh breeze, or gale, &c.)	
	Hour.	Min.	Hour.	Min.	Hour.	Min.	Galls.	Qts.	Pints.	Gills.					
1	5	50	6	35	12	45	1			1	None	3 in	Lamp butts	North Som Cloudy & Smoky Am S. E. Pm open night with Snow	
2	5	57	6	33	12	42	1					3 in	"	N. E. of North Snowing hard since 1 Am N. W. 2 Pm Snow in night	
3	5	53	6	31	12	38	1					3 in	"	West Snow in forenoon Afternoon & night with clear & cold	
Sunday	5	54	6	30	12	36	1						"	S. W. Clear & cold 6 above 0 F. Very Clear & cold day & night	
5	5	55	6	28	12	33	1						"	West Clear & cold 8 above 0 N. W. & cold 4 Pm 10 above 10 Pleasant	
6	5	56	6	27	12	31	1					1 2t	"	South Cloudy & cold Am S. W. Pm & High (Pm) Still night	
7	5	57	6	25	12	28	1					3 in	"	North High Clear & cold N. E. all night & blowing a Gale & squalls Snow	
8	5	59	6	23	12	24	1						"	N. E. & Very High Am all day with squalls in night & wind High	
9	6	00	6	21	12	21				1	3		"	North High & cold 2 below 0 7 Am West Pm. Cold & Clear night	
10	6	01	6	19	12	18					1	3	"	N. W. Cold & Clear Pleasant day & night but Very Cold	
Sunday	6	02	6	18	12	16					1	3	3 in	"	North with Snow all forenoon N. E. Pm no Snow Cloudy & Pm Snow Stormy
12	6	03	6	16	12	13							3 in	Lamp butts	N. E. & Squalls Snow wind High all day & Pm N. W. High all night
13	6	05	6	14	12	09	1	0	0				"	"	S. W. Clear & Pleasant Am Pm Cloudy & Pm S. E. High & Snow in night
14	6	06	6	12	12	06					1	3	"	"	N. W. with High & Clear since 3 Am Pleasant day & night but Cold
15	6	07	6	11	12	02					1	3	"	"	West Cold Am 4 below 0 Clear Am Pm Cloudy & Some Snow in night
16	6	08	6	09	12	01	0	1					3 in	1 2t Lamp butts	N. E. & Snow all forenoon & wind High and a good deal Snow in night
17	6	09	6	08	11	59				1			"	"	N. W. Am with Snow Pm S. W. Clear & cold night late full ice
Sunday	6	10	6	06	11	56				1			"	"	N. W. Clear & cold Am N. E. Pm Clear S. E. & Snow in night
19	6	12	6	04	11	52				1			"	"	N. E. High & Snow all forenoon Pm Clear & Pleasant & in night late full ice
20	6	13	6	02	11	49				1			3 in	"	South Cloudy 2 Pm S. E. & Snow 5 Pm N. E. Snowy night
21	6	14	6	00	11	46					1	3	3 in	"	N. W. & with Pleasant Am S. W. Pm. Pleasant & Pm West High 1/2
22	6	15	5	59	11	44					1	3	"	"	South Cloudy & foggy Am 4 Pm North & High Very High all night
23	6	16	5	57	11	41				1			"	"	N. E. Very High & cold Very Cold day & wind High all night
24	6	17	5	55	11	38				1			"	"	N. E. High & Clouds all day wind High goes Part night
Sunday	6	18	5	54	11	36					1	3	3 in	"	North Cold & Pleasant day & Pleasant night but cold
26	6	20	5	52	11	32					1	3	1. 2t	"	N. N. W. Cold & Pleasant Am & a white frost Cloudy Pm
27	6	21	5	50	11	29				1			"	"	N. N. W. Pleasant day & night late full ice
28	6	22	5	48	11	26					1	3	3	"	North Clear & cold wind with High
29	6	23	5	46	11	23				1			"	"	North High Clear & cold all day Pleasant night
30	6	24	5	45	11	21					1	3	"	"	S. E. & Som Cloudy all day S. E. in night High with rain
31	6	25	5	44	11	19					1	3	"	"	S. E. Very Cloudy

372 36 8 3/8 House, None 3 3 in 3. 2t

	GALLONS.	QUARTS.	PINTS.
Total quantity consumed in the lamp of the Light-House	7	1	1 Pt 1 q
Total quantity consumed this month for use in the dwelling-house or quarters, and other hand lamps, from oil butts.....		3	
Total quantity expended in this month.....	8	0	1. " 1"

Order of Lens *Lth* Kind of Light *N. W. P.*
 Number of Wicks in burner *One* Diameter of outer burner *One 3/4 in*
 Written by me— *Daniel W. Greene*

Daniel W. Greene, Light-Keeper.
Nonee, Ass't Keeper.

ACCOUNT of Oil, Wicks, and Chimneys expended daily *Milwaukee North Point* Light *House* in the month of *April*, 1877, and showing the time of lighting and extinguishing, and the length of time lighted each night.

DAY.	Time of lighting.		Time of extinguishing the light.		Length of time lighted.		Daily quantity of oil consumed in Light-house or Light-vessel lamps.				Number of chimneys broken each night.	Inches of new wick expended.	Quantity of oil taken from butts and set aside for hand and house lamps.	REMARKS ON THE WEATHER. (Dry, damp, rainy, snowy, light wind, moderate breeze, fresh breeze, or gale, &c.)
	Hour.	Min.	Hour.	Min.	Hour.	Min.	Galls.	Qts.	Pints.	Gills.				
<i>Sunday</i> 1	6 26	5 42	11 16	"	"	"	1	"	"	"	<i>None</i>	3 in	<i>Lamp full</i>	<i>S. E. Very foggy & a heavy shower thunder lightning 12 P.M. 10 Am. S. W. High</i>
2	6 27	5 40	11 13	"	"	"	1	3	"	"	"	3 in	"	<i>S. W. very high & cold & clear 15° above 0.7 Am. S. E. P.M. High & cold 4 P.M. East</i>
3	6 28	5 38	11 10	"	"	"	1	3	"	"	"	"	"	<i>S. E. High clear & cold. Ice on windows in towers Am. S. E. P.M. High clear & night</i>
4	6 29	5 37	11 08	"	"	"	1	3	"	"	"	1 2 1/2	"	<i>South & some cloudy & warm Am. 2 P.M. S. W. & rain west in night Quite pleasant</i>
5	6 30	5 35	11 05	"	"	"	1	3	"	"	"	3 in	"	<i>West & a white frost Am. Pleasant 8 Am. Quite cloudy between 1 & 2 P.M. Snow hard</i>
6	6 31	5 33	11 02	"	"	"	1	3	"	"	"	"	"	<i>West very pleasant Am. white frost 2 P.M. Cloudy & cold S. E. Pleasant night in Taylor</i>
7	6 32	5 32	11 00	"	"	"	1	"	"	"	"	"	<i>Lamp full</i>	<i>S. E. & a white frost cold & pleasant Am. East P.M. & Quite pleasant S. E. in night</i>
<i>Sunday</i> 8	6 33	5 30	10 57	"	"	"	1	3	"	"	"	"	"	<i>S. E. High & cloudy 10 Am. North & High all day S. E. & High all night</i>
9	6 34	5 29	10 55	"	"	"	1	3	"	"	"	3 in	"	<i>S. E. High & cloudy all day & night</i>
10	6 35	5 27	10 52	"	"	"	1	3	"	"	"	"	"	<i>S. E. High clear & cold winds high all day Pleasant night</i>
11	6 36	5 26	10 50	"	"	"	1	3	"	"	"	3 in	"	<i>North in morning early 10 Am. S. E. Quite high & clear all day & night</i>
12	6 37	5 24	10 47	"	"	"	1	3	"	"	"	"	"	<i>North clear & S. E. P.M. Quite clear & pleasant all night</i>
13	6 39	5 22	10 43	"	"	"	1	3	"	"	"	3 in	1 1/2	<i>S. E. Clear & pleasant all day & night but cold.</i>
14	6 40	5 20	10 40	"	"	"	1	3	"	"	"	"	"	<i>S. E. Clear & pleasant & very pleasant day S. E. 6 P.M. Very still night</i>
<i>Sunday</i> 15	6 41	5 18	10 37	"	"	"	1	"	"	"	"	"	<i>Lamp full</i>	<i>S. W. Very calm smoky morning 8 Am. S. E. 11 Am. East & cloudy S. E. in night</i>
16	6 43	5 17	10 32	"	"	"	1	3	"	0	"	"	"	<i>S. W. cloudy & smoky at sunrise 8 Am. Quite pleasant & warm 10 Am. S. W. 5 P.M. S. E. in night</i>
17	6 44	5 15	10 31	"	"	"	1	3	"	"	"	"	"	<i>S. E. Cloudy & a drizzling rain until 6 P.M. wind S. E. & East very heavy showers</i>
18	6 45	5 13	10 28	"	"	"	1	3	"	"	"	"	"	<i>East very foggy & rainy we had two very heavy thunder storms since 12</i>
19	6 46	5 11	10 25	"	"	"	1	3	"	"	"	3 in	"	<i>North & very rainy hard all day & then has gone down South of the light</i>
20	6 47	5 10	10 23	"	"	"	1	3	"	"	"	3 in	"	<i>North clear & quite high S. E. in night & quite pleasant</i>
21	6 48	5 09	10 21	"	"	"	1	3	"	"	"	"	"	<i>S. E. Am. Pleasant S. E. P.M. & night & very pleasant</i>
<i>Sunday</i> 22	6 49	5 08	10 19	"	"	"	1	3	"	"	"	3 in	1 2 1/2	<i>South & pleasant Am. S. E. P.M. & a pleasant night</i>
23	6 50	5 06	10 16	"	"	"	1	3	"	"	"	"	"	<i>S. E. very pleasant Am. South & cloudy in P.M. in night</i>
24	6 51	5 05	10 14	"	"	"	1	3	"	"	"	"	"	<i>North & cloudy Am. west P.M. & quite as pleasant day & night</i>
25	6 53	5 03	10 10	"	"	"	1	3	"	"	"	"	"	<i>S. W. Some smoky but pleasant S. E. P.M. East in night Pleasant</i>
26	6 52	5 01	10 07	"	"	"	1	2	"	"	"	"	"	<i>North calm & cloudy S. W. P.M. & cold & North in night blowing</i>
27	6 55	5 00	10 05	"	"	"	1	3	"	"	"	"	"	<i>S. W. Am. High & cloudy 10 Am. S. E. High & cold all day & night with</i>
28	6 56	4 59	10 03	"	"	"	1	3	"	"	"	"	"	<i>North & S. E. Very high cloudy & rain & snow windows in towers</i>
<i>Sunday</i> 29	6 57	4 58	10 01	"	"	"	1	3	"	"	"	"	"	<i>North & cloudy snow on the ground S. E. P.M. Snow & rain all night</i>
30	6 58	4 56	9 58	"	"	"	1	3	"	<i>None</i>	"	2 1/2	"	<i>S. W. Cloudy & snow & cold winds East & a cold night</i>
31														

	GALLONS.	QUARTS.	PINTS.
Total quantity consumed in the lamp of the Light- <i>House</i>	6	2	10 0 1/4
Total quantity consumed this month for use in the dwelling-house or quarters, and other hand lamps, from oil butts. <i>Lamp</i>		2	10 6
Total quantity expended in this month.	2	1	0 0

Order of Lens *N. Y. 7*
 Kind of Light *L. Ho*
 Number of Wicks in burner *One*
 Diameter of outer burner *One 3/4*
 Written by me—
Daniel K Green

Daniel K Green, Light-Keeper.
None, Ass't Keeper.

and showing the time of lighting and extinguishing, and the length of time lighted each night.

May

DAY.	Time of lighting.		Time of extinguishing the light.		Length of time lighted.		Daily quantity of oil consumed in Light-house or Light-vessel lamps.				Number of chimneys broken each night.	Inches of new wick expended.	Quantity of oil taken from butts and set aside for hand and house lamps.	REMARKS ON THE WEATHER. (Dry, damp, rainy, snowy, light wind, moderate breeze, fresh breeze, or gale, &c.)						
	Hour.	Min.	Hour.	Min.	Hour.	Min.	Galls.	Qts.	Pints.	Gills.										
1	6	39	4	55	9	56	"	"	1	3					<i>Some</i>	<i>6 in</i>	<i>Unsp. till 11⁰⁰ N.E. Clear & cold Am East Prev in night</i>			
2	7	01	4	53	9	52	"	"	1	3							<i>"</i>	<i>"</i>	<i>Very calm & pleasant Am S.E. Pm Cloudy & cold night</i>	
3	7	02	4	51	9	49	"	"	1	2							<i>3 in</i>	<i>"</i>	<i>S.W. Smoky but pleasant S.E. Pm Quite cool & cloudy night</i>	
4	7	04	4	50	9	46	"	"	1	2								<i>"</i>	<i>S.W. in morning N.E. in Afternoons Clear & cold in night</i>	
5	7	04	4	49	9	45	"	"	1	2								<i>"</i>	<i>East & cool 10 Am N.E. Afternoon North & High in night</i>	
<i>Sunday</i> 6	7	05	4	48	9	43	"	"	1	2								<i>"</i>	<i>East cool & pleasant Am N.E. 10 Am Quite High Pm Cloudy night</i>	
7	7	06	4	47	9	41	"	"	1	2								<i>"</i>	<i>N.E. High Cloudy & Smoky North all night & Very High</i>	
8	7	07	4	45	9	38	"	"	1	2								<i>1.25</i>	<i>"</i>	<i>North High & clear Am Quite High all day Pleasant night</i>
9	7	08	4	44	9	36	"	"	1	2								<i>"</i>	<i>S.W. in morning 8 Am S.E. all day Cool Unpleasant day Pleasant night</i>	
10	7	09	4	43	9	34	"	"	1	2								<i>"</i>	<i>North High Clear & cold N.E. Pm quite Clear & Pleasant night</i>	
11	7	10	4	42	9	32	"	"	1	2								<i>"</i>	<i>North Pleasant morning 9 Am N.E. Quite Clear & Pleasant day & night</i>	
12	7	11	4	41	9	30	"	"	1	2								<i>"</i>	<i>North all day Very Pleasant day & night</i>	
<i>Sunday</i> 13	7	12	4	40	9	28	"	"	1	2								<i>3 in</i>	<i>"</i>	<i>N.E. & cloudy Am Pm Clear & Pleasant night</i>
14	7	13	4	39	9	26	"	"	1	2								<i>"</i>	<i>S.E. Am & Smoky Pleasant day & night</i>	
15	7	14	4	38	9	24	"	"	1	2								<i>3 in</i>	<i>"</i>	<i>S.W. Calm & foggy Am 9 Am South & S.E. Cloudy with some rain</i>
16	7	15	4	37	9	22	"	"	1	2								<i>"</i>	<i>S.W. Cloudy & Smoky & very warm day 1. of the Season Pleasant night</i>	
17	7	16	4	36	9	20	"	"	1	2								<i>"</i>	<i>S.W. & Very foggy with rain 3 Am Pm Wind. South & High in n</i>	
18	7	17	4	35	9	18	"	"	1	2								<i>"</i>	<i>S.W. warm & cloudy with rain quite foggy all day & fore part night</i>	
19	7	18	4	34	9	16	"	"	1	2								<i>"</i>	<i>South Som. Cloudy South East Pm Quite as Pleasant night</i>	
<i>Sunday</i> 20	7	19	4	33	9	14	"	"	1	2								<i>"</i>	<i>East & cloudy & warm S.E. Pm Warm & foggy 2. Heavy Showers Pm & Pm S.W. fog all some Pleasant night</i>	
21	7	20	4	33	9	13	"	"	1	2								<i>3 in</i>	<i>"</i>	<i>West Strong Breeze Clear all day S.W. Pm & Som. rain in night</i>
22	7	21	4	32	9	11	"	"	1	2								<i>"</i>	<i>North & cold drizzling rain Am Pm Wind N.W. Very High & cold in night</i>	
23	7	22	4	31	9	09	"	"	1	2								<i>1.25</i>	<i>"</i>	<i>S.W. Clear High & cold Am N.E. Pm Quite a Pleasant Pm & night</i>
24	7	23	4	30	9	07	"	"	1	2								<i>"</i>	<i>N.W. Cold & clear Quite as Pleasant but Quite cold for the Season</i>	
25	7	23	4	30	9	07	"	"	1	2								<i>3 in</i>	<i>"</i>	<i>North Cold & clear N.E. Pm and night & Very cold</i>
26	7	24	4	29	9	05	"	"	1	2								<i>"</i>	<i>North W. Clear & cold North & S.E. & East Pm & night Quite Pleasant</i>	
<i>Sunday</i> 27	7	25	4	29	9	04	"	"	1	2								<i>"</i>	<i>S.W. Very fine morning S.E. & cold Pm & in night</i>	
28	7	26	4	28	9	02	"	"	1	2								<i>3 in</i>	<i>"</i>	<i>South Pleasant & warm Am 11 Am S.E. & Very cool all day to Pm S.W. Cool</i>
29	7	27	4	27	9	00	"	"	1	2								<i>"</i>	<i>South & Pleasant Am 10 Am S.E. & cool day & night wind. S.W.</i>	
30	7	28	4	27	8	59	"	"	1	2								<i>"</i>	<i>S.E. Som. Smoky Cloudy & cold all day & night</i>	
31	7	29	4	26	8	57	"	"	1	2								<i>"</i>	<i>S.E. all day cold & clear Cloudy in night with some rain</i>	

	GALLONS.	QUARTS.	PINTS.
Total quantity consumed in the lamp of the Light House.....	5	3	1. Pt 0
Total quantity consumed this month for use in the dwelling-house or quarters, and other hand lamps, from oil butts.... <i>Fitted</i>		2	
Total quantity expended in this month... <i>May</i>	6	1	1. 0

Order of Lens *4th* Kind of Light *F. V. F.*
 Number of Wicks in burner *One* Diameter of outer burner *1 3/4*
 Written by me— *Daniel K Green*

Daniel K Green, Light-Keeper.
None, Ass't Keeper.

ACCOUNT of Oil, Wicks, and Chimneys expended daily *Milwaukee North Point* Light House, in the month of *June*, 1877, and showing the time of lighting and extinguishing, and the length of time lighted each night.

Table with columns: DAY, Time of lighting, Time of extinguishing, Length of time lighted, Daily quantity of oil consumed, Number of chimneys broken, Inches of new wick expended, Quantity of oil taken from butts, and REMARKS ON THE WEATHER. Includes handwritten entries for days 1 through 31.

Summary table with columns: GALLONS, QUARTS, PINTS. Rows include: Total quantity consumed in the lamp of the Light House, Total quantity consumed this month for use in the dwelling-house or quarters, and Total quantity expended in this month.

Order of Lens *H. the* Kind of Light *F. F. F.*
Number of Wicks in burner *One* Diameter of outer burner *1 3/4*

Written by me— *Daniel K. Green*

Daniel K. Green, Light-Keeper.
None, Ass't Keeper.

and showing the time of lighting and extinguishing, and the length of time lighted each night.

DAY.	Time of lighting.		Time of extinguishing the light.		Length of time lighted.		Daily quantity of oil consumed in Light-house or Light-vessel lamps.				Number of chimneys broken each night.	Inches of new wick expended.	Quantity of oil taken from butts and set aside for hand and house lamps.	REMARKS ON THE WEATHER. (Dry, damp, rainy, snowy, light wind, moderate breeze, fresh breeze, or gale, &c.)
	Hour.	Min.	Hour.	Min.	Hour.	Min.	Galls.	Qts.	Pints.	Gills.				
Sunday 1	7	40	4	27	8	27					None	0		Lamp full wind S.W. West & High Am. Dul. Clear all day into Ryan's of Lady Call
2	7	40	4	28	8	48						3in		S. E. Cloudy some rain early S. E. all day some cloudy P.M. Looking like rain P.M. from Cam
3	7	39	4	29	8	50						3in		West. Cool & Clear Am. warm P.M. & P.M. N. E. all night & Cloudy from Part
4	7	39	4	29	8	50								N. E. at Sun Rise 5 Am Heavy Shower South of Am Heavy Shower 9 Am foggy light rain 4 Am
5	7	39	4	30	8	51								N. E. warm & Pleasant until 10. Am foggy 2 P.M. Heavy Shower wind blowing a Gale
6	7	39	4	30	8	51						1. 2t		N. E. Quite High & Clear all day Pleasant day & night
7	7	38	4	31	8	53								S. W. Very Pleasant Am warm P.M. & P.M. Cloudy 9 P.M. Commence raining Heavy Shower
Sunday 8	7	38	4	32	8	54								N. W. dark & rainy Am with heavy thunder 10 Am Clear Pleasant all day
9	7	38	4	32	8	54								West & Pleasant Am hot as Sal in sight 3 Am P.M. N. E. Pleasant night
10	7	37	4	33	8	56						3in		N. E. Cool & Pleasant 11 Am some cloudy looking like rain none came Pleasant day & night
11	7	37	4	34	8	57						3in		West. & Very Pleasant Am S. E. P.M. & South in night & a Pleasant day & night
12	7	37	4	34	8	57								N. W. Breeze & Pleasant S. E. P.M. Quite Pleasant & fine Part of night
13	7	36	4	35	8	59								N. W. very Pleasant & warm S. W. P.M. South & S. E. in night very warm & Pleasant
14	7	36	4	35	8	59								South warm & Cloudy 6 Am looking like rain none came Very warm day
Sunday 15	7	35	4	37	9	02								West very warm day & night quite Pleasant but very warm
16	7	35	4	37	9	02								West in Am S. W. P.M. & in night very warm
17	7	34	4	38	9	04								S. W. & Breeze S. W. P.M. & Very High 11 P.M. a Very little rain
18	7	33	4	39	9	06						3in		West 1 Am. Very Heavy Thunder no rain very warm night
19	7	32	4	40	9	08						3in		West & Cloudy all day all day Quite as still night Supplies by Express wagon P.M. 3 P.M.
20	7	31	4	41	9	10						3in on new Burner by Camp		N. W. Cool & Cloudy Commando Miller James Fisk Cluck & Camps Janis, Refram
21	7	30	4	42	9	12								West & Quite Cool Am S. E. P.M. Quite Pleasant P.M. & night
Sunday 22	7	29	4	43	9	14						1. 2t		West in Am. S. E. in P.M. & night Quite Pleasant
23	7	28	4	44	9	16								West P.M. Very warm day & night The warmest day of the Season
24	7	27	4	45	9	18								N. W. warm & Smoky Am 10 Am. N. E. a very warm day & night
25	7	26	4	46	9	20								N. E. cloudy all day at times & Very warm 5 P.M. very little rain 10 P.M.
26	7	25	4	47	9	22								S. E. & very foggy until 1 P.M. when we had some rain S. W. in night clear
27	7	24	4	48	9	24								S. W. & Cloudy all day Looking like rain none came S. E. & South in night
28	7	23	4	49	9	26								S. E. & Am some cloudy 6 Am Very foggy 1. How Call on Mr Ryan's
Sunday 29	7	22	4	50	9	28						3in		West Clear & Pleasant Am very warm day & night
30	7	21	4	51	9	30								N. W. Clear & Pleasant Am North & S. E. P.M. very warm day & night
31	7	20	4	52	9	32								East cloudy & Smoky Am S. E. P.M. a very warm day & night

	GALLONS.	QUARTS.	PINTS.
Total quantity consumed in the lamp of the Light- House	5	0	0 3 Gills
Total quantity consumed this month for use in the dwelling-house or quarters, and other hand lamps, from oil butts		2	
Total quantity expended in this month. July	5	2	0 3 Gills

Order of Lens *4th* Kind of Light *W. W. L.*
 Number of Wicks in burner *One* Diameter of outer burner *One 3/4 in*
 Written by me— *Daniel W. Green*

Daniel W. Green, Light-Keeper.
None, Ass't Keeper.

ACCOUNT of Oil, Wicks, and Chimneys expended daily Milwaukee North Point Light House, in the month of August, 1877, and showing the time of lighting and extinguishing, and the length of time lighted each night.

August

Main data table with columns: DAY, Time of lighting, Time of extinguishing, Length of time lighted, Daily quantity of oil consumed, Number of chimneys broken, Inches of new wick expended, Quantity of oil taken from butts, and REMARKS ON THE WEATHER.

Summary table with columns: GALLONS, QUARTS, PINTS. Rows include: Total quantity consumed in the lamp of the Light House, Total quantity consumed this month for use in the dwelling-house or quarters, and Total quantity expended in this month.

Order of Lens 4th Kind of Light S.W. Kind of Light S.W. Number of Wicks in burner One Diameter of outer burner 1 3/4 in. Written by me— Daniel W. Green

Daniel W. Green, Light-Keeper. None, Ass't Keeper.

and showing the time of lighting and extinguishing, and the length of time lighted each night.

DAY.	Time of lighting.		Time of extinguishing the light.		Length of time lighted.		Daily quantity of oil consumed in Light-house or Light-vessel lamps.				Number of chimneys broken each night.	Inches of new wick expended.	Quantity of oil taken from butts and set aside for hand and house lamps.	REMARKS ON THE WEATHER. (Dry, damp, rainy, snowy, light wind, moderate breeze, fresh breeze, or gale, &c.)
	Hour.	Min.	Hour.	Min.	Hour.	Min.	Galls.	Qts.	Pints.	Gills.				
1	6	34	5	25	10	51	"	"	1	2	None	3 in	2 1/2	<i>Samp full wind N.W. High & Clear all day 2 1/2 in. Cool in night</i>
<i>Sunday</i> 2	6	33	5	26	10	53	"	"	1	2	"	"	"	<i>West Cool & Pleasant & Cool day & night</i>
3	6	31	5	27	10	56	"	"	1	2	"	3 in	"	<i>N.W. very Cool & Pleasant all day & night</i>
4	6	29	5	28	10	59	"	"	1	2	"	"	"	<i>West Clear & Pleasant Am 10 Am South & P.W. very warm ^{Some} 6 Pm 90°</i>
5	6	28	5	29	11	01	"	"	1	2	"	"	"	<i>N.W. & Cloudy winds N.E. all day & Pmt. High all day & night</i>
6	6	26	5	31	11	05	"	"	1	2	"	"	"	<i>East High & Clear Am N.E. Pmt in night very High & Clear</i>
7	6	24	5	32	11	08	"	"	1	2	"	3 in	"	<i>S.E. Clear & Pleasant all day & night</i>
8	6	22	5	33	11	11	"	"	1	2	"	"	"	<i>S.E. Clear & warm all day & night</i>
<i>Sunday</i> 9	6	20	5	32	11	14	"	"	1	2	"	"	"	<i>South Am S.E. Pmt. warm & Cloudy in night</i>
10	6	18	5	35	11	17	"	"	1	2	"	3 in	"	<i>East & Clear Pleasant Am & day N.E. & North in night & very damp</i>
11	6	17	5	36	11	19	"	"	1	2	"	"	"	<i>North damp & Cloudy Am N.E. Pmt & very Cloudy 6 to 8 Pm Foggy</i>
12	6	15	5	37	11	22	"	"	1	2	"	3 in	"	<i>West damp & Smoky Am 7 Am very Foggy 9 Am fog all gone ^{S.E. Pmt South in P}</i>
13	6	13	5	38	11	25	"	"	1	2	"	"	"	<i>S.W. & very Foggy in Am 8 Am fog all gone S.E. Pmt quite High ^{High}</i>
14	6	12	5	39	11	27	"	"	1	2	"	"	"	<i>South Cloudy Am S.E. Pmt High & Cloudy Pleasant fore part night</i>
15	6	10	5	20	11	30	"	"	1	2	"	"	"	<i>West very Cloudy & some rain since 1 Am Pleasant warm Pmt & night</i>
<i>Sunday</i> 16	6	08	5	21	11	33	"	"	1	3	"	"	<i>Samp full</i>	<i>West Am very Pleasant 10 Am S.E. West in night & very Pleasant</i>
17	6	06	5	22	11	36	"	"	1	2	"	"	"	<i>West & N.W. in forenoon & all day Clear & Pleasant night</i>
18	6	05	5	23	11	38	"	"	1	3	"	3 in	<i>Samp full</i>	<i>West & Clear Cold Am the Coldest of the season Clear & Cool ^{very}</i>
19	6	03	5	24	11	41	"	"	1	3	"	6 in	"	<i>West. Clear & Cool Am Cloudy Pmt South in night & some Cloudy</i>
20	6	01	5	25	11	44	"	"	1	3	"	"	1. 25	<i>N.W. 3 Am Heavy Shower 10 Am North 2 Pmt N.E. & very High N.E. all ^{very}</i>
21	5	59	5	26	11	47	"	"	1	3	"	"	"	<i>East & High Am S.E. Pmt in night</i>
22	5	57	5	28	11	51	"	"	1	3	"	"	"	<i>South High & Clear Am S.E. Pmt very High & Clear in Pmt night</i>
<i>Sunday</i> 23	5	55	5	29	11	54	"	"	1	3	"	"	"	<i>S.W. & very fine Am S.E. Pmt quite High & Clear ^{Cloudy in day}</i>
24	5	52	5	30	11	56	"	"	1	3	"	"	"	<i>S.W. quite Smoky Am S.E. Pmt. very Pleasant day & night</i>
25	5	52	5	31	11	59	"	"	1	3	"	"	"	<i>S.W. High & Clear 10 Am Cloudy S.E. Pmt High & Clear at times ^{Cloudy in day} Pmt Cloudy some</i>
26	5	50	5	32	12	02	"	"	1	3	"	3 in	"	<i>N.E. & very Foggy 5 Am 9 Am North & still foggy all day & fore part of night</i>
27	5	49	5	33	12	04	"	"	1	3	"	"	"	<i>East & Cloudy 6 to 7 very Foggy wind South 2 Pmt S.E. & Cloudy 6 Pmt North ^{much}</i>
28	5	47	5	34	12	07	"	"	1	3	"	"	"	<i>North High & Cloudy since 2 Am & all day Pleasant Pmt or a Foggy night</i>
29	5	45	5	35	12	10	"	"	1	3	"	"	"	<i>S.W. & very Foggy 10 Am fog gone warm day & night</i>
<i>Sunday</i> 30	5	43	5	36	12	13	"	"	1	3	"	"	"	<i>S.E. Pleasant Am & some S.W. & High</i>
31					34	53	6	0	0	2				
					6	3	0	2			None	27 in	3 1/2	

	GALLONS.	QUARTS.	PINTS.
Total quantity consumed in the lamp of the Light-House	6	0	0 = 2 1/2
Total quantity consumed this month for use in the dwelling-house or quarters, and other hand lamps, from oil butts.		3	0 0
Total quantity expended in this month.	6	3	0 2

Order of Lens *4 No* Kind of Light *S. W. S.*
 Number of Wicks in burner *One* Diameter of outer burner *One 3/4 in*
 Written by me— *Daniel W. Green*

Daniel W. Green, Light-Keeper.
None, Ass't Keeper.

ACCOUNT of Oil, Wicks, and Chimneys expended daily *Milwaukee North Point* Light House, in the month of *October*, 1877,

and showing the time of lighting and extinguishing, and the length of time lighted each night.

Oct

DAY.	Time of lighting.		Time of extinguishing the light.		Length of time lighted.		Daily quantity of oil consumed in Light-house or Light-vessel lamps.				Number of chimneys broken each night.	Inches of new wick expended.	Quantity of oil taken from butts and set aside for hand and house lamps.	REMARKS ON THE WEATHER. (Dry, damp, rainy, snowy, light wind, moderate breeze, fresh breeze, or gale, &c.)
	Hour.	Min.	Hour.	Min.	Hour.	Min.	Galls.	Qts.	Pints.	Gills.				
1	5 41	5 58	12 17	"	"	"	1	3			None	6 in		Cloudy all day & night
2	5 39	5 59	12 20	"	"	"	1	3			"	1.25		N. E. very dark & cloudy Am & very foggy all day & night
3	5 38	6 00	12 22	"	"	"	1	3			"			East & a heavy foggy Am 11 Am fog all gone Showery P.M. dark & cloudy night
4	5 36	6 01	12 25	"	"	"	1	3			"	3 in		N. W. dark & cloudy Am winds high & cold cloudy day winds west in night
5	5 35	6 02	12 27	"	"	"	1	3			"	6 in		West Som cloudy & a little frost in Am & in the fall P.M. Clear in night
6	5 33	6 03	12 30	"	"	"	1	3			"			West Clear & cold with a white frost very pleasant day & night
<i>Sunday</i> 7	5 31	6 04	12 33	"	"	"	1	3			"			S. W. dark & cloudy & no rain cloudy damp day & night
8	5 29	6 05	12 36	"	"	"	1	3			"			S. W. very cloudy winds N. W. P.M. in night quite damp & cool
9	5 28	6 06	12 38	"	"	"	1	3			"			West very damp & Am a dense fog & wind. Varying all day heavy Am
10	5 27	6 07	12 40	"	"	"	1	3			"			N. W. very high & cloudy & rain in day Pleasant night
11	5 26	6 09	12 43	"	"	"	1	3			"			N. E. all day Pleasant Am Som cloudy P.M. wind quite high Pleasant
12	5 24	6 10	12 46	"	"	"	1	3			"	3 in	2 qt	S. E. quite high & cloudy Lake gulls & sails cloudy & high P.M. & night Som rain
13	5 22	6 11	12 49	"	"	"	1	3			"	3 in		South & cloudy warm dawn in P.M. Pleasant night
<i>Sunday</i> 14	5 20	6 12	12 52	"	"	"	1	3			"	3 in		S. E. Clear Pleasant Am & P.M. rain winds quite high Pleasant night
15	5 18	6 13	12 55	"	"	"	1	3			"			West cloudy & damp smoky Am quite Pleasant P.M. night
16	5 16	6 14	12 58	"	"	"	1	3			"			S. E. cloudy Am Pleasant day Stormy night
17	5 15	6 15	13 00	"	"	"	1	3			"			South & stormy & foggy Am dark & cloudy P.M. night
18	5 13	6 17	13 04	"	"	"	1	"	"		"			N. E. all day cloudy & foggy blowing a Gale & rain in night
19	5 12	6 18	13 06	"	"	"	1	"	"		"	3 in		N. E. blowing a Gale all day & very cloudy night
20	5 11	6 19	13 08	"	"	"	1	3			"			N. E. blowing a Gale all day & night
<i>Sunday</i> 21	5 09	6 20	13 11	"	"	"	1	3			"	3 in		N. E. Blm & cold winds High P.M. & night but Clear
22	5 08	6 21	13 13	"	"	"	1	3			"	3 in		S. W. & West all day quite a Pleasant day night John Dredwell
23	5 06	6 22	13 16	"	"	"	1	3			"			S. W. quite High Som Som smoky Am winds High Clear P.M.
24	5 04	6 24	13 20	"	"	"	1	3			"			S. W. in Am Early quite High Clear 11 Am South & cloudy smoky
25	5 03	6 25	13 22	"	"	"	1	0 4			"			West smoky & cloudy Am 10 Am North & cloudy P.M. rain wind by
26	5 02	6 26	13 24	"	"	"	1	"	"		"			East High & cloudy all day & night winds quite High
27	5 00	6 28	13 28	"	"	"	1	"	"		"			S. E. cloudy & High with rain Am 3 P.M. Clear & Pleasant night
<i>Sunday</i> 28	4 59	6 29	13 30	"	"	"	1	"	"		"	3 in		North Blm cold & Am N. E. 11 Am East 3 P.M. N. E. P.M. rain Har low Gale all day
29	4 58	6 30	13 32	"	"	"	1	"	"		"			N. W. Am Blm & cold Am P.M. P.M. night cold & clear
30	4 56	6 32	13 36	"	"	"	1	"	"		"			West Pleasant & cold Am & forenoon P.M. S. W. quite High & cloudy day
31	4 55	6 33	13 38	"	"	"	1	"	"		"			N. W. cold & cloudy Am P.M. winds quite High Still in night

401 39 4 93 0-2 None 36 in 3. 25 House

	GALLONS.	QUARTS.	PINTS.
Total quantity consumed in the lamp of the Light- <i>House</i>	7	0	0 2 Gills
Total quantity consumed this month for use in the dwelling-house or quarters, and other hand lamps, from oil butts..... <i>3 qt</i>		3	
Total quantity expended in this month. <i>October</i>	7	3	0 2 Gills

Order of Lens *4th* Kind of Light *N. Y. H.*
 Number of Wicks in burner *One* Diameter of outer burner *1 3/4 in*

Written by me—

Daniel W. Green

Daniel W. Green, Light-Keeper.
Jones, Ass't Keeper.

ACCOUNT of Oil, Wicks, and Chimneys expended daily *Milwaukee North Point* Light House in the month of *November*, 18 *77*, and showing the time of lighting and extinguishing, and the length of time lighted each night.

DAY.	Time of lighting.		Time of extinguishing the light.		Length of time lighted.		Daily quantity of oil consumed in Light-house or Light-vessel lamps.				Number of chimneys broken each night.	Inches of new wick expended.	Quantity of oil taken from butts and set aside for hand and house lamps.	REMARKS ON THE WEATHER. (Dry, damp, rainy, snowy, light wind, moderate breeze, fresh breeze, or gale, &c.)	
	Hour.	Min.	Hour.	Min.	Hour.	Min.	Galls.	Qts.	Pints.	Gills.					
1	4 52	6 34	13 40	"	1	"	1	"	"	"	None	6 in	1.25	Lamp full Wind S.E. N. Smoky & cold very white frost Am Pm Snow & rain all night	
2	4 52	6 35	13 43	"	1	"	"	"	"	"	"	"	"	"	West Cool & cloudy with Snow & rain Am Pm S.W. High & cold all night
3	4 51	6 36	13 45	"	1	"	"	"	"	"	"	"	"	"	West Cold clear all day winds S.W. Pm und. Cold night -
Sunday 4	4 50	6 37	13 47	"	1	"	"	"	"	"	"	3 in	"	"	S.W. Cold & cloudy 10 Am Snow S.E. Pm Cold Snow tedious day at anchor
5	4 48	6 39	13 51	"	1	"	1	"	"	"	"	"	"	"	North Blowing a Gale Snow very Cold day & night Bay full Bol
6	4 47	6 40	13 53	"	1	"	1	"	"	"	"	3 in	Lamp full	"	West & cold Am Cold & Pleasant Pm in night
7	4 46	6 41	13 55	"	1	"	"	"	"	"	"	"	"	"	South West Cool Am Cool Pm in night with rain wind S.E.
8	4 45	6 42	13 57	"	1	"	"	"	"	"	"	"	"	"	North & very High dark 2 Pm S.E. Blowing gale all night Snow S.
9	4 44	6 44	14 00	"	1	"	1	"	"	"	"	3 in	"	"	S.W. very High & growing Cold all day Cloudy & winds High all night
10	4 43	6 45	14 02	"	1	"	"	"	"	"	"	"	"	"	West & cold Am South Pm Clear & Pleasant night Lady in pin
Sunday 11	4 42	6 46	14 04	"	1	"	"	"	"	"	"	"	1.25	"	S.W. Clear & cold very white frost this Am Pleasant Pm No Pyram
12	4 41	6 48	14 07	"	1	"	"	"	"	"	"	3 in	"	"	S.W. a very Pleasant day & night wind in night
13	4 40	6 49	14 09	"	1	"	"	"	"	"	"	"	"	"	S.W. Clear & Pleasant Am & a white frost 11 Am winds South High
14	4 39	6 51	14 11	"	1	"	1	"	"	"	"	"	Lamp full	"	S.W. dark & cloudy Am some rain & snow S.E. Pm very dark & gloomy day & night
15	4 38	6 52	14 12	"	1	"	1	"	"	"	"	3 in	"	"	S.W. not very cold Am Clear & Pleasant night
16	4 37	6 53	14 16	"	1	"	1	"	"	"	"	"	"	"	S.W. quite Pleasant Am but a white frost 11 Am Cloudy in Pm S.E. & cloudy
17	4 37	6 54	14 17	"	1	"	1	"	"	"	"	"	"	"	S.W. Pleasant Am S.W. Clear & cold Cloudy in night
Sunday 18	4 36	6 55	14 19	"	1	"	1	"	"	"	"	3 in	"	"	S.W. Cloudy & cold in Am Pm. Cold & S.E. in night Snowing hard
19	4 35	6 56	14 20	"	1	"	1	"	"	"	"	"	Lamp full	"	S.E. dark & cloudy Am 11 Am East & S.E. cloudy night South & H
20	4 35	6 57	14 22	"	1	"	1	"	"	"	"	3 in	"	"	S.E. all day Pleasant & cool Pm Rainy & cloudy night
21	4 34	6 58	14 24	"	1	"	1	"	"	"	"	"	"	"	S.W. Blue & cold Am Cool & cloudy Pm & night
22	4 34	6 59	14 25	"	1	"	1	"	"	"	"	"	1.25	"	South & S.W. dark & cloudy Am S.E. Pm Cloudy & dark night
23	4 33	7 01	14 28	"	1	"	1	"	"	"	"	"	"	"	S.E. Am dark & cloudy rainy day foggy Pm West in night
24	4 32	7 02	14 30	"	1	"	1	"	"	"	"	"	"	"	S.E. Cloudy & some foggy North & S.E. in night Cool & damp
Sunday 25	4 32	7 03	14 31	"	1	"	1	"	"	"	"	"	"	"	S.W. dark & cloudy Am S.E. Pm in night rainy all night
26	4 31	7 04	14 33	"	1	"	1	"	"	"	"	3	"	"	S.E. rainy dark & Am a day & night very low sun 3.18. L. 4.25. O. 7.0
27	4 30	7 06	14 36	"	1	"	1	"	"	"	"	"	"	"	S.W. dark & damp Am 8 Am Snow S.W. all day with snow most of the night
28	4 30	7 07	14 37	"	1	"	2	"	"	"	"	3 in	Lamp full	"	S.W. quite High & cold all day with squalls Snow Cold day & night
29	4 29	7 08	14 39	"	1	"	2	"	"	"	"	"	"	"	S.W. Cold day & night Thawing Giveing day 11 Am above zero
30	4 29	7 09	14 40	"	1	"	1	"	"	"	"	"	"	"	S.W. Cold & Clear Am Pm warm & Pleasant Snow full water from Ice from
31			4 26 16	8	0	1	3					3 25	None	3 3 in	

	GALLONS.	QUARTS.	PINTS.
Total quantity consumed in the lamp of the Light-House.....	8	0	1. 19 3 Galls
Total quantity consumed this month for use in the dwelling-house or quarters, and other hand lamps, from oil butts.....		3	4 0
Total quantity expended in this month..... <i>November</i>	8	3	1. 19 3 Galls

Order of Lens *4th* Kind of Light *N.P. 8*
 Number of Wicks in burner *One* Diameter of outer burner *1 3/4 in*

Written by me—

Daniel H. Green

Daniel H. Green Light-keeper.
None, Ass't Keeper.

and showing the time of lighting and extinguishing, and the length of time lighted each night.

DAY.	Time of lighting.		Time of extinguishing the light.		Length of time lighted.		Daily quantity of oil consumed in Light-house or Light-vessel lamps.				Number of chimneys broken each night.	Inches of new wick expended.	Quantity of oil taken from butts and set aside for hand and house lamps.	REMARKS ON THE WEATHER. (Dry, damp, rainy, snowy, light wind, moderate breeze, fresh breeze, or gale, &c.)	
	Hour.	Min.	Hour.	Min.	Hour.	Min.	Galls.	Qts.	Pints.	Gills.					
1	4 29	7 10	14 41	"	1	2					None	3 in	1 25	Lamp full	N. W. Cold & Cloudy Am Clear & Pleasant Pm very cold night
Sunday	4 29	7 11	14 42	"	1	2					"			"	S. W. Clear & Cold day & night winds high in night
3	4 29	7 12	14 43	"	1	1					"			"	S. W. all day & very Pleasant day 5 Pm Cloudy wind S. E. & High in night
4	4 29	7 13	14 44	"	1	1					"	3 in		"	S. E. very High with rain since 2 Am dark & gloomy day wind S. W. & High in night
5	4 28	7 14	14 46	"	1	1					"	3 in		"	West in Am dark & Cloudy S. W. Pm High & Pm Snow & rain all night
6	4 28	7 15	14 47	"	1	1					"			"	N. W. Cloudy & cold with squalls of snow all day S. W. Pm & Cold night
7	4 28	7 16	14 48	"	1	2					"			Lamp full	S. W. Cloudy & Cold Am S. W. Pm Clear & wind quite High in night
8	4 28	7 17	14 49	"	1	2					"			"	S. W. quite High Clear & Cold all day & night
Sunday	4 28	7 18	14 50	"	1	2					"	3 in	1 25	"	S. W. Pleasant & cold Am 9 Am Cloudy & Cold Pm S. E. wind Clear & Cold
10	4 28	7 19	14 51	"	1	1					"			"	West High & Cold Am Pleasant Pm Cloudy night
11	4 28	7 19	14 51	"	1	1					"			"	West Cloudy Am S. W. Pm Very Pleasant Pm foggy night
12	4 28	7 20	14 52	"	1	1					"			"	S. E. & a very foggy Am 12 M dry all gone Pleasant Pm & night wind
13	4 28	7 21	14 53	"	1	1					"	6 in		"	West Pleasant Am S. W. Pm & Very Pleasant night
14	4 28	7 22	14 54	"	1	2					"			Lamp full	South of a very white frost 10 Am wind High S. W. Pm & High in night
15	4 29	7 22	14 53	"	1	2					"		1 25	"	S. W. Am Pleasant & a very warm day and Pleasant night
Sunday	4 29	7 23	14 54	"	1	2					"			"	S. W. very Pleasant & a white frost Am warm Pleasant day Som foggy in night
17	4 29	7 23	14 54	"	1	1					"	3 in		"	North of a foggy Am S. E. Pm fog gone wind High S. E. wind & rain in night
18	4 30	7 24	14 54	"	1	1					"			"	S. E. High dark & rainy Am & Pm South & raining hard foggy & rain
19	4 30	7 25	14 55	"	1	1					"			"	West Som Cloudy but quite warm Am Pm foggy & rainy night
20	4 31	7 25	14 54	"	1	1					"			"	North of very foggy 9 Am South of foggy Very warm & foggy night
21	4 31	7 26	14 55	"	1	1					"	3 in		"	Very calm & foggy Am North Pm & Pleasant & Pm dark & Cloudy & foggy night
22	4 31	7 27	14 56	"	1	2					"			"	S. E. Cloudy & foggy Am Unpleasant day foggy & rainy Pm & night
Sunday	4 32	7 27	14 55	"	1	2					"			Lamp full	S. E. very foggy & damp. Am foggy all day and night
24	4 33	7 27	14 54	"	1	1					"			"	South of very foggy with rain all day & Pm wind Change S. E. & all rainy & foggy
25	4 33	7 28	14 55	"	1	1					"	3 in	1 25	"	Change from S. E. to North & Am very foggy 10 Am wind North & High all night
26	4 34	7 28	14 54	"	1	1					"			"	North High & Cloudy Very Cloudy Unpleasant day & night
27	4 34	7 29	14 55	"	1	2					"	3 in		Lamp full	S. E. Early in Am 10 Am East & some rain & Clear & High all day & night
28	4 35	7 29	14 54	"	1	1					"			"	S. E. Cloudy & rain Som foggy East Pm Clear & Very High in night
29	4 36	7 29	14 53	"	1	1					"			"	North High & Cloudy Am S. E. Pm Clear & High Pm getting Cold Drizzling rain
Sunday	4 37	7 29	14 52	"	1	1					"			"	North High & Cloudy Little rain S. E. Pm getting Cold
31	4 38	7 29	14 57	"	1	1					"			"	S. E. in Am Cloudy & Cold Pleasant night Mr Taylor call one 2 in Pm.

	GALLONS.	QUARTS.	PINTS.
Total quantity consumed in the lamp of the Light- <i>House</i>	9	0	0 Pt. 2.9
Total quantity consumed this month for use in the dwelling-house or quarters, and other hand lamps, from oil butts.....	1	0	0
Total quantity expended in this month..... <i>December</i>	10	0	0 2

Order of Lens *4th* Kind of Light *S. E. 8*
 Number of Wicks in burner *One* Diameter of outer burner *1 3/4*
 Written by me— *Daniel W Green*

Daniel W Green, Light-Keeper.
None, Ass't Keeper.

GENERAL ACCOUNT of Stores received at the Light-

House

at

Milwaukee North Point

Number of lights and order of apparatus,

On 7th

to the Order

Description of light,

Flash

OIL.

WICKS.

CHIMNEYS.

CLEANING MATERIALS, &c.

YEAR AND DAY OF THE MONTH.

January

1876

Day.

Jan order light, galls.

4th order lens, yards.

Reflector, doz.

Rod lamp, doz.

Solar lamp.

Hand lamp & Lucernes, oz.

order lens, no.

Ruby, order.

Reflector, no.

Solar lamp, no.

Rod lamp, no.

Emery paper, sheets.

Sand paper, sheets.

Writing paper, quires

Blotting paper, sheets.

Rouge powder, oz.

Rotten stone, lbs.

Whiting, lbs.

Calf-skin, pieces.

Linen towels, no.

Buff-skins, no.

Spirits wine, qts.

Cloek oil, vials.

Soap, lbs.

Sponges, no.

Crash towels, no.

Spare filter cloth, no.

Spare rods, no.

Spare cord, revolving machine, no.

Spare lamp cords, no.

Lamp burners, no.

Hand lamps, no.

January

1. 55.

GENERAL ACCOUNT of Stores consumed at the Light-

House

at

Milwaukee North Point

Number of lights and order of apparatus, *One Ltho*

Description of light,

YEAR AND DAY OF THE MONTH.

January
1877.

Day.

1

OIL.

WICKS.

CHIMNEYS.

CLEANING MATERIALS, &c.

- order light, galls.
- order lens, yards.
- Reflector, doz.
- Rod lamp, doz.
- Solar lamp.
- Hand lamp & Lucernes, oz.
- order lens, no.
- Ruby, order.
- Reflector, no.
- Solar lamp, no.
- Rod lamp, no.
- Emery paper, sheets.
- Sand paper, sheets.
- Writing paper, quires
- Blotting paper, sheets.
- Rouge powder, oz.
- Rotten stone, lbs.
- Whiting, lbs.
- Calfskin, pieces.
- Linen towels, no.
- Buffskins, no.
- Spirits wine, qts.
- Clock oil, vials.
- Soap, lbs.
- Sponges, no.
- Crash towels, no.
- Spare filter cloth, no.
- Spare rods, no.
- Spare cord, revolving machine, no.
- Spare lamp cords, no.
- Lamp burners, no.
- Hand lamps, no.

GENERAL ACCOUNT of Stores received at the Light-

at

Number of lights and order of apparatus,

Description of light,

YEAR AND DAY OF THE MONTH.		CLEANING MATERIALS.	BRUSHES.
18	Day.	Filtering sand, galls.	
		Sets valves, sets.	
		Valve leathers, sets.	
		Flexible, for cleaning lamps, no.	
		Paint, large, no.	
		Paint, small, no.	
		Coal tar, no.	
		Chimney, no.	
		Clockmakers' no.	
		Camel's hair, no.	
		Feather, no.	
		Silverplaters', no.	
		Wolf's head, no.	
		Flat, for putting dissolved rouge and whiting on apparatus, no.	
		Whitewash, no.	
		Sash, no.	
		Hand, no.	
		Clamp or scrub, no.	
		Sweeping, no.	
		Chimney flannels, no.	
		Paint, white, ground in oil, lbs.	
		Paint, black, ground in oil, lbs.	
		Dry red lead, lbs.	
		Dry white lead, lbs.	
		Yellow paint, lbs.	
		Lamp-black, lbs.	
		Boiled oil, galls.	
		Spirits turpentine, galls.	
		Coal tar, galls.	
		Litharge, lbs.	
		Drying, bottles.	